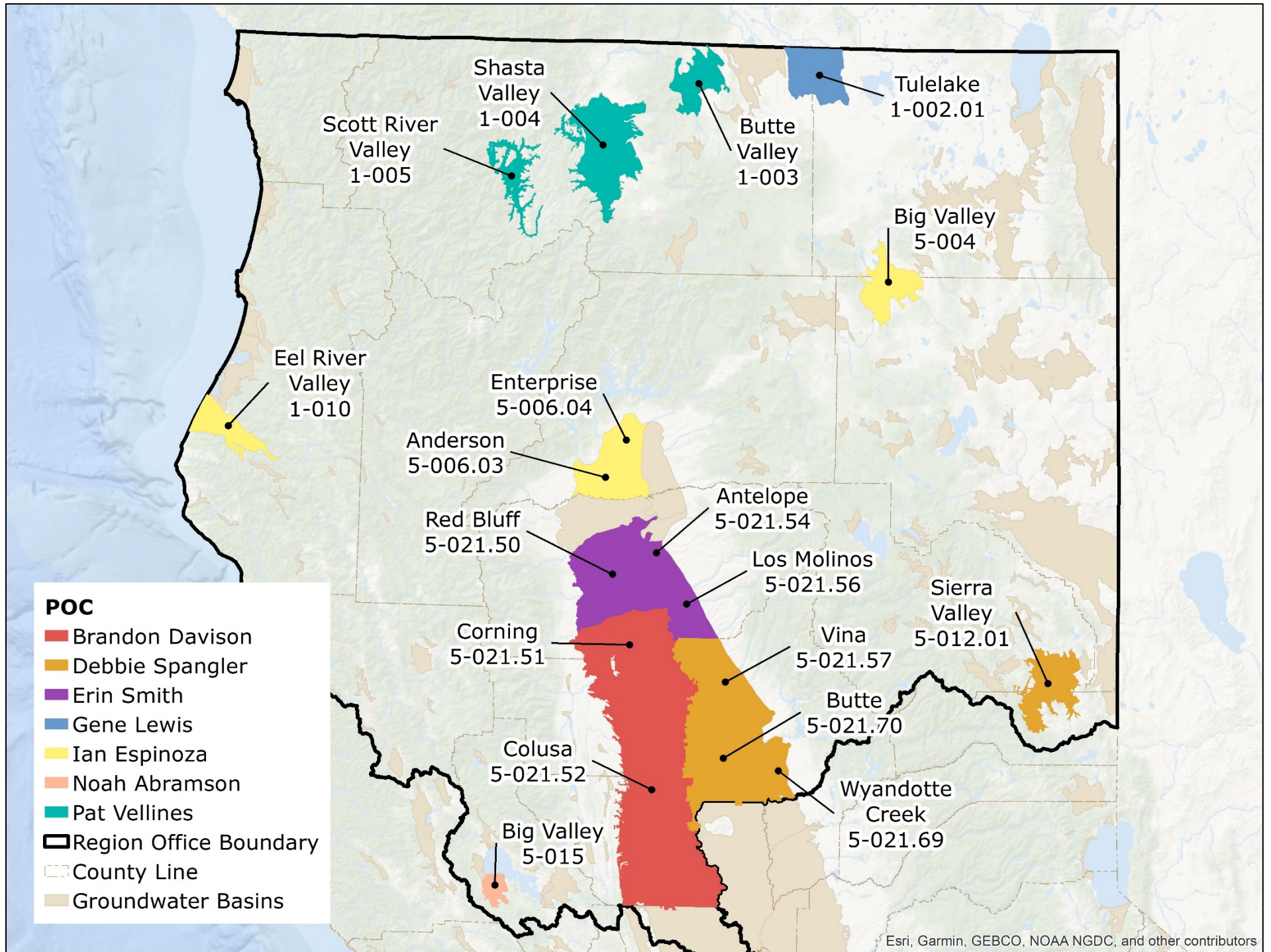


Northern Region Office

SGMA Points of Contact – Subject to Change



This map illustrates the Point of Contact (POC) for each listed groundwater basin. DWR has POCs for your use when contacting DWR with questions related to SGMA. If a groundwater basin of interest is not listed on the map or table below, and you have questions, please email SGMP_RC@water.ca.gov. POCs will get back to you during regular business hours as soon as possible. This map is current as of October 2020 and subject to change.



POC	Email	Phone	Basin(s)
Brandon Davison	Brandon.Davison@water.ca.gov	(530) 529-7379	Sacramento Valley – [Corning (5-021.51), Colusa (5-021.52)]
Debbie Spangler	Debbie.Spangler@water.ca.gov	(530) 528-7404	Sierra Valley - Sierra Valley (5-012.01), Sacramento Valley – [Vina (5-021.57), Wyandotte Creek (5-021.69), Butte (5-021.70)]
Erin Smith	Erin.Smith@water.ca.gov	(530) 529-7314	Sacramento Valley – [Antelope (5-021.54), Red Bluff (5-021.50), Los Molinos (5-021.56)]
Gene Lewis	Gene.Lewis@water.ca.gov	(530) 528-7424	Klamath River Valley - Tulelake (1-002.01)
Ian Espinoza	Ian.Espinoza@water.ca.gov	(530) 529-7330	Eel River Valley (1-010), Redding Area – [Anderson (5-006.03), Enterprise (5-006.04)], Big Valley (5-004)
Noah Abramson	Noah.Abramson@water.ca.gov	(530) 529-7308	Big Valley (5-015)
Pat Vellines	Patricia.Vellines@water.ca.gov	(530) 529-7344	Scott River Valley (1-005), Shasta Valley (1-004), Butte Valley (1-003)

