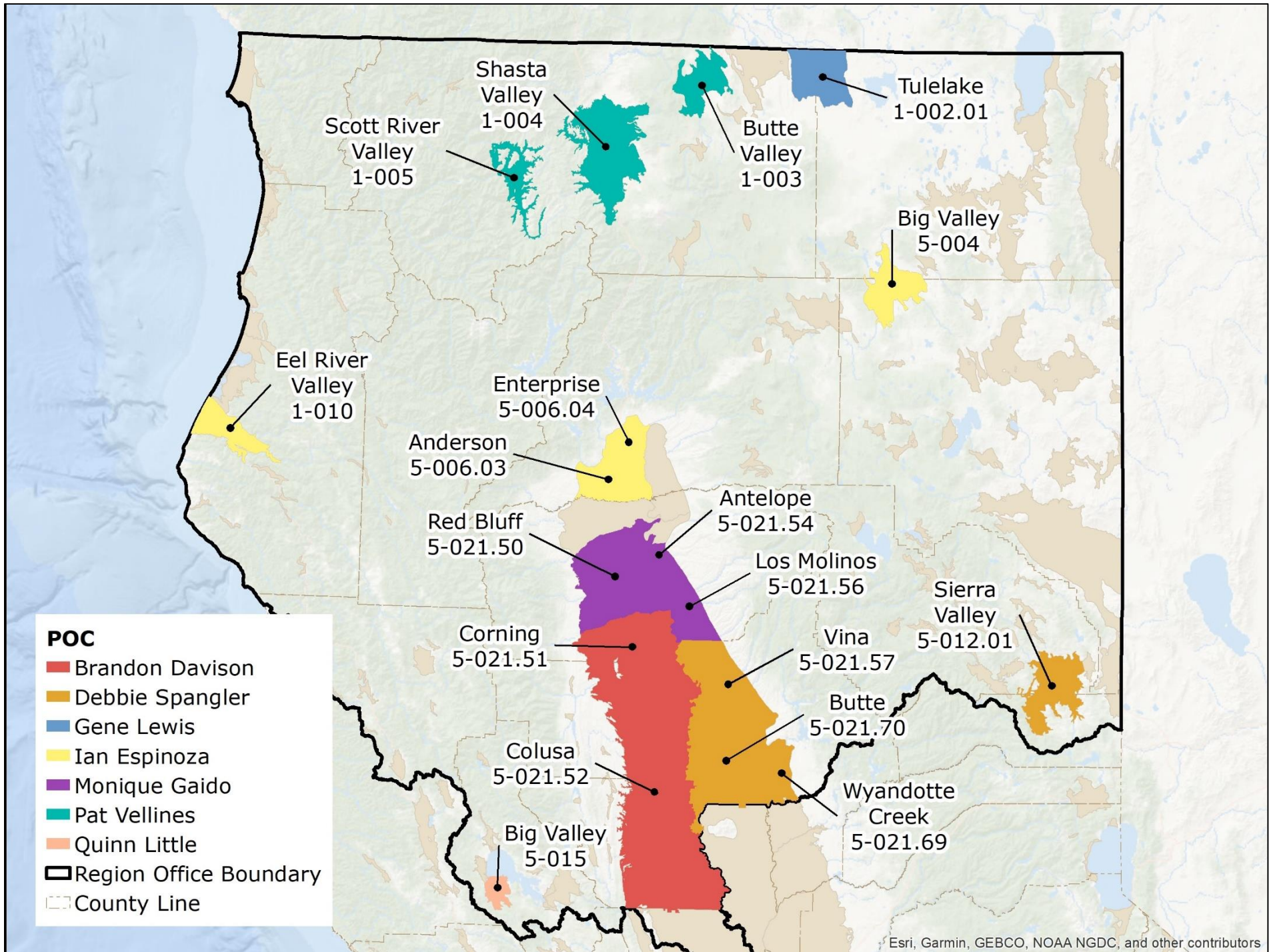


Northern Region Office

SGMA Points of Contact – Subject to Change



This map illustrates the Point of Contact (POC) for each listed groundwater basin. DWR has POCs for your use when contacting DWR with questions related to SGMA. If a groundwater basin of interest is not listed on the map or table below, and you have questions, please email SGMP_RC@water.ca.gov. POCs will get back to you during regular business hours as soon as possible. This map is current as of July 2022 and subject to change.



POC	Email	Phone	Basin(s)
Brandon Davison	Brandon.Davison@water.ca.gov	530-529-7379	Sacramento Valley – [Corning (5-021.51), Colusa (5-021.52)]
Debbie Spangler	Debbie.Spangler@water.ca.gov	530-528-7404	Sierra Valley - Sierra Valley (5-012.01), Sacramento Valley – [Vina (5-021.57), Wyandotte Creek (5-021.69), Butte (5-021.70)]
Gene Lewis	Gene.Lewis@water.ca.gov	530-528-7424	Klamath River Valley - Tulelake (1-002.01)
Ian Espinoza	Ian.Espinoza@water.ca.gov	530-529-7330	Eel River Valley (1-010), Redding Area – [Anderson (5-006.03), Enterprise (5-006.04)], Big Valley (5-004)
Monique Gaido	Monique.Gaido@water.ca.gov	530-529-7337	Sacramento Valley – [Antelope (5-021.54), Red Bluff (5-021.50), Los Molinos (5-021.56)]
Pat Vellines	Patricia.Vellines@water.ca.gov	530-529-7344	Butte Valley (1-003), Shasta Valley (1-004), Scott River Valley (1-005)
Quinn Little	Quinn.Little@water.ca.gov	530-529-7314	Big Valley (5-015)

