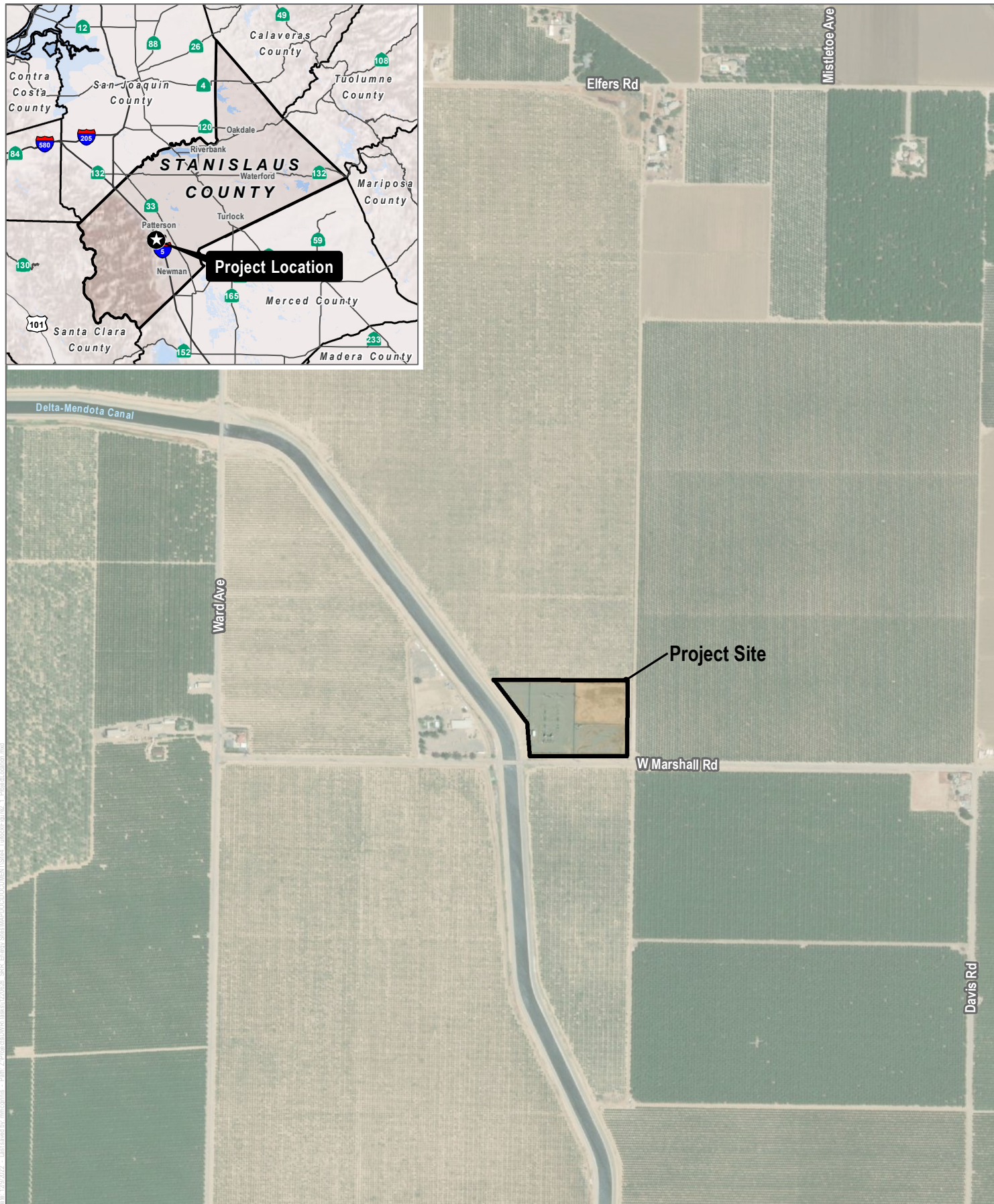


# Appendix A

---

## Figures





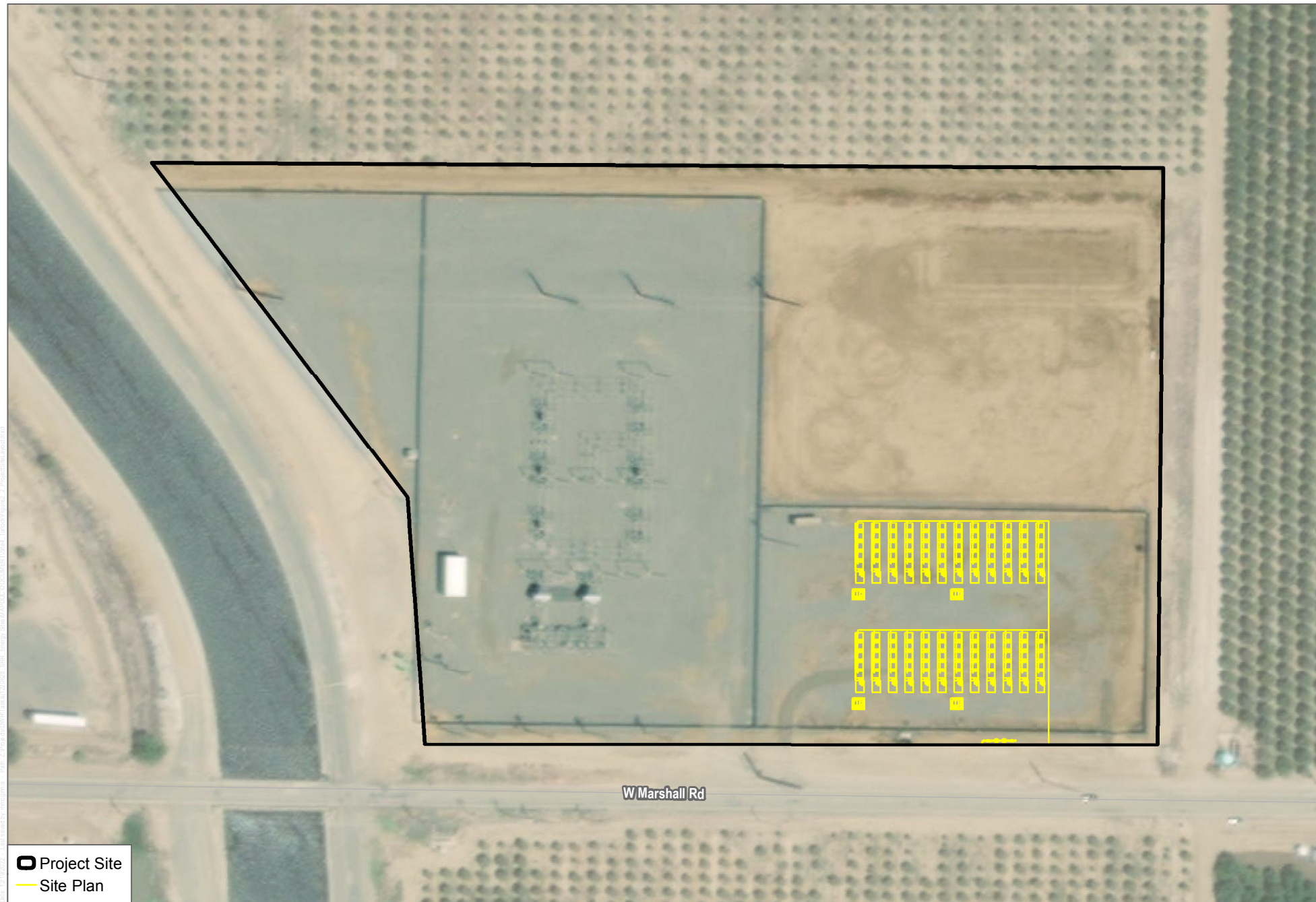
SOURCE: DWR 2022; ESRI World Imagery 2021



0 500 1,000 Feet

**FIGURE 2-1**  
Project Location

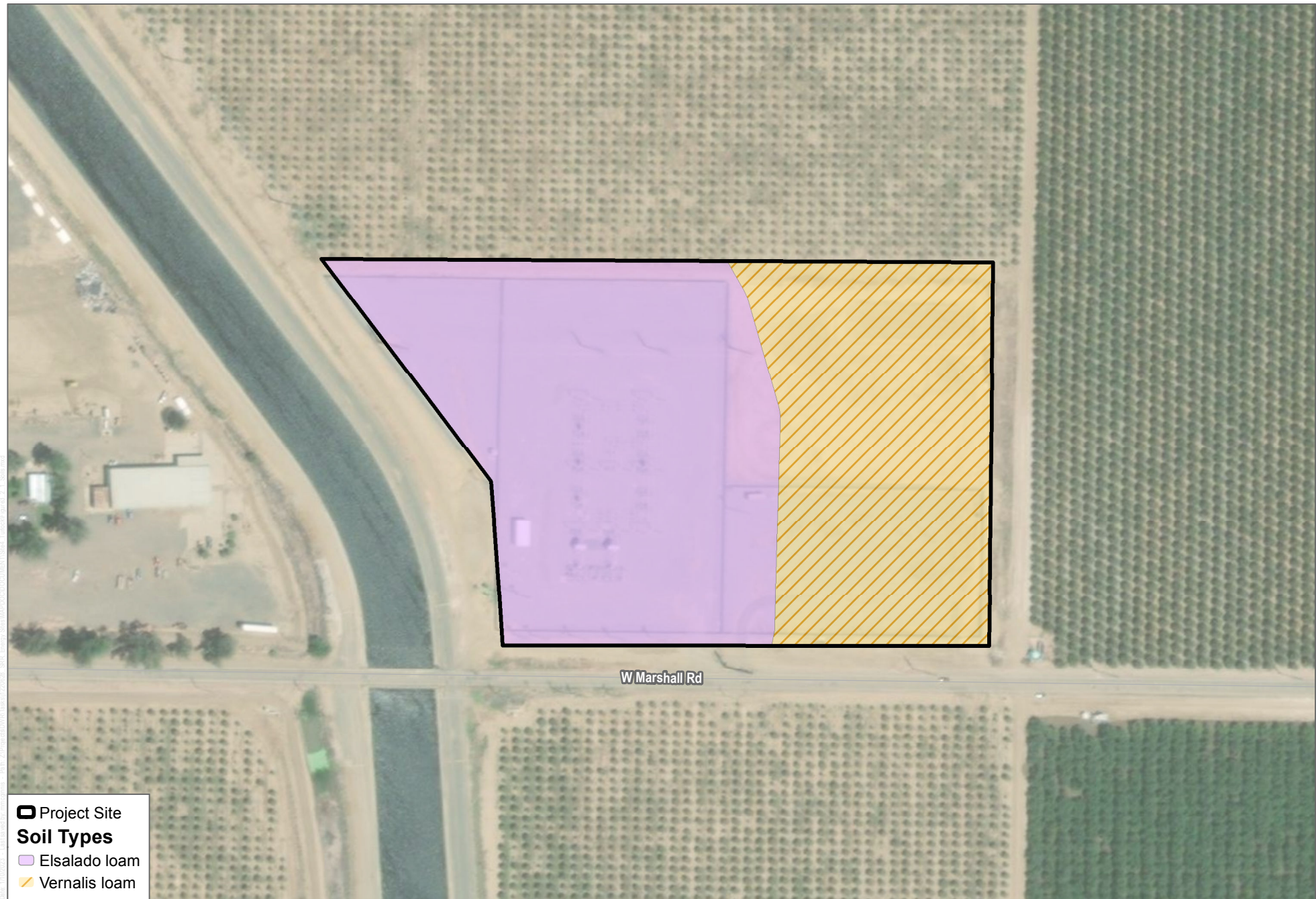




SOURCE: DWR 2022; ESRI World Imagery 2021; Enchanted Rock 2022

**FIGURE 2-2**  
Project Site Layout

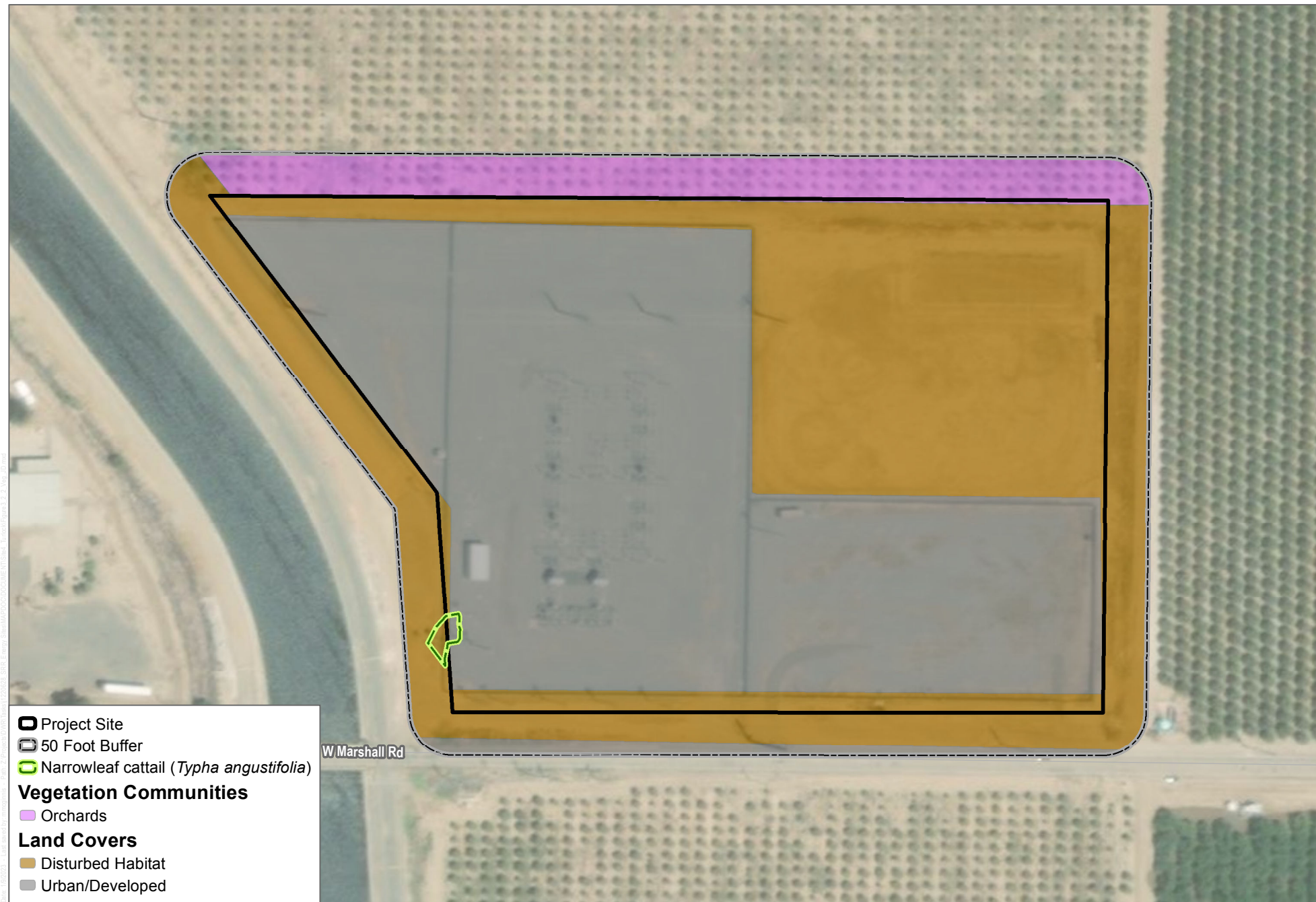




SOURCE: DWR 2022; ESRI World Imagery 2021; USDA 2019

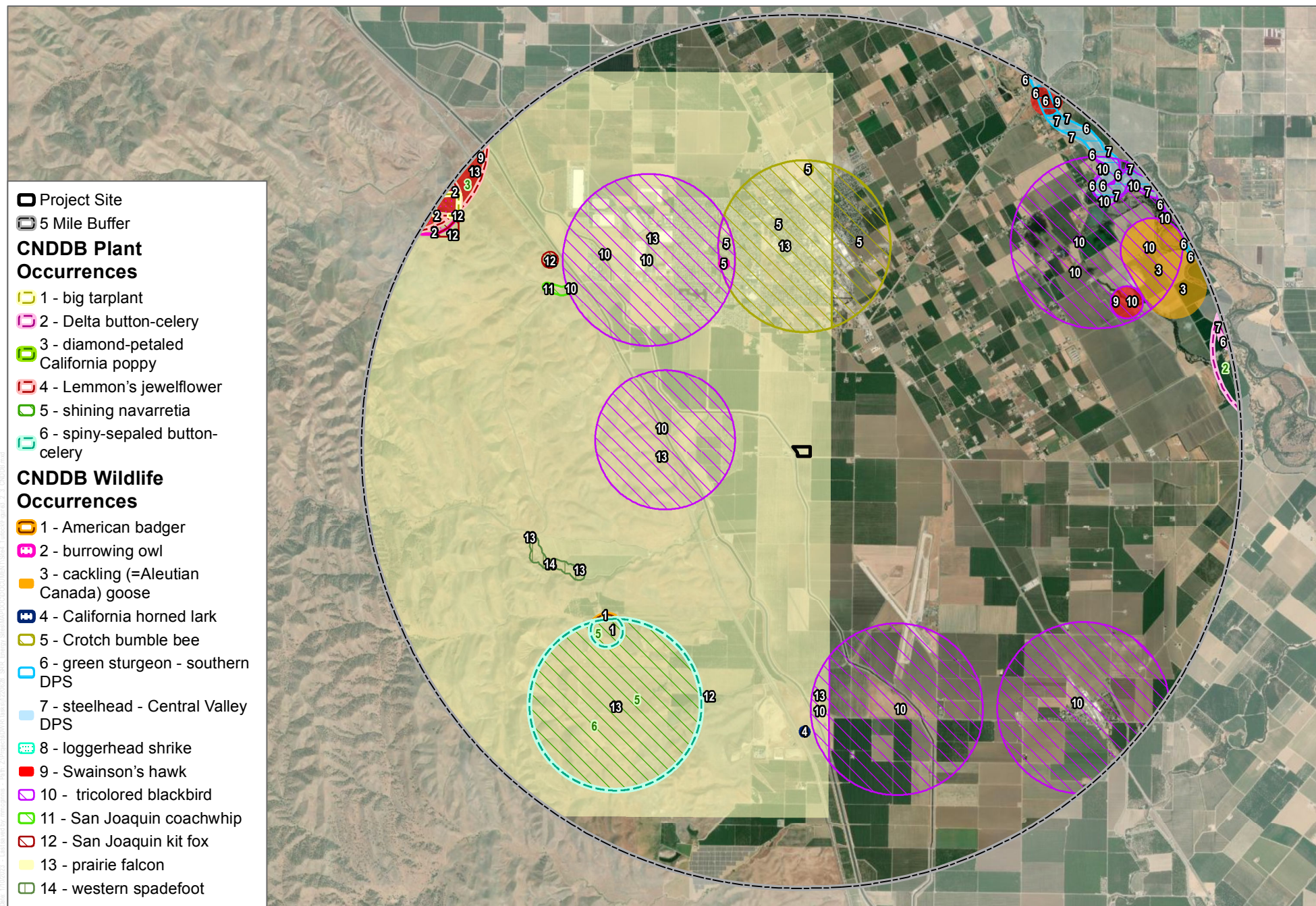
**FIGURE 3.2-1**  
**Soil Types**





SOURCE: DWR 2022; ESRI World Imagery 2021





SOURCE: DWR 2022; ESRI World Imagery 2020; CDFW 2022

**FIGURE 3.2-3**

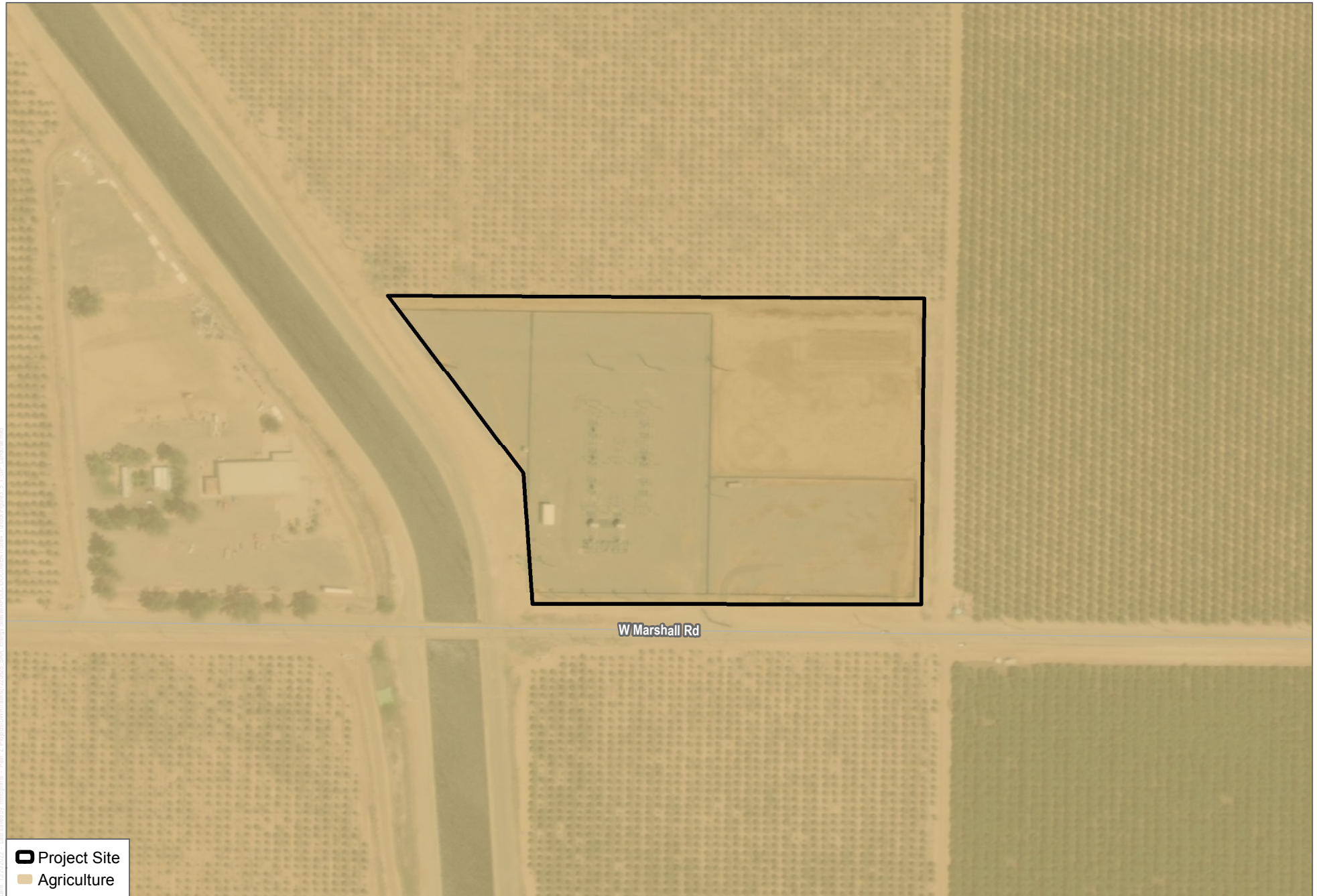
California Natural Diversity Database





**FIGURE 3.4-1**

**Project Site Features**



SOURCE: DWR 2022; ESRI World Imagery 2021; Stainslaus County 2022

**DUDEK**



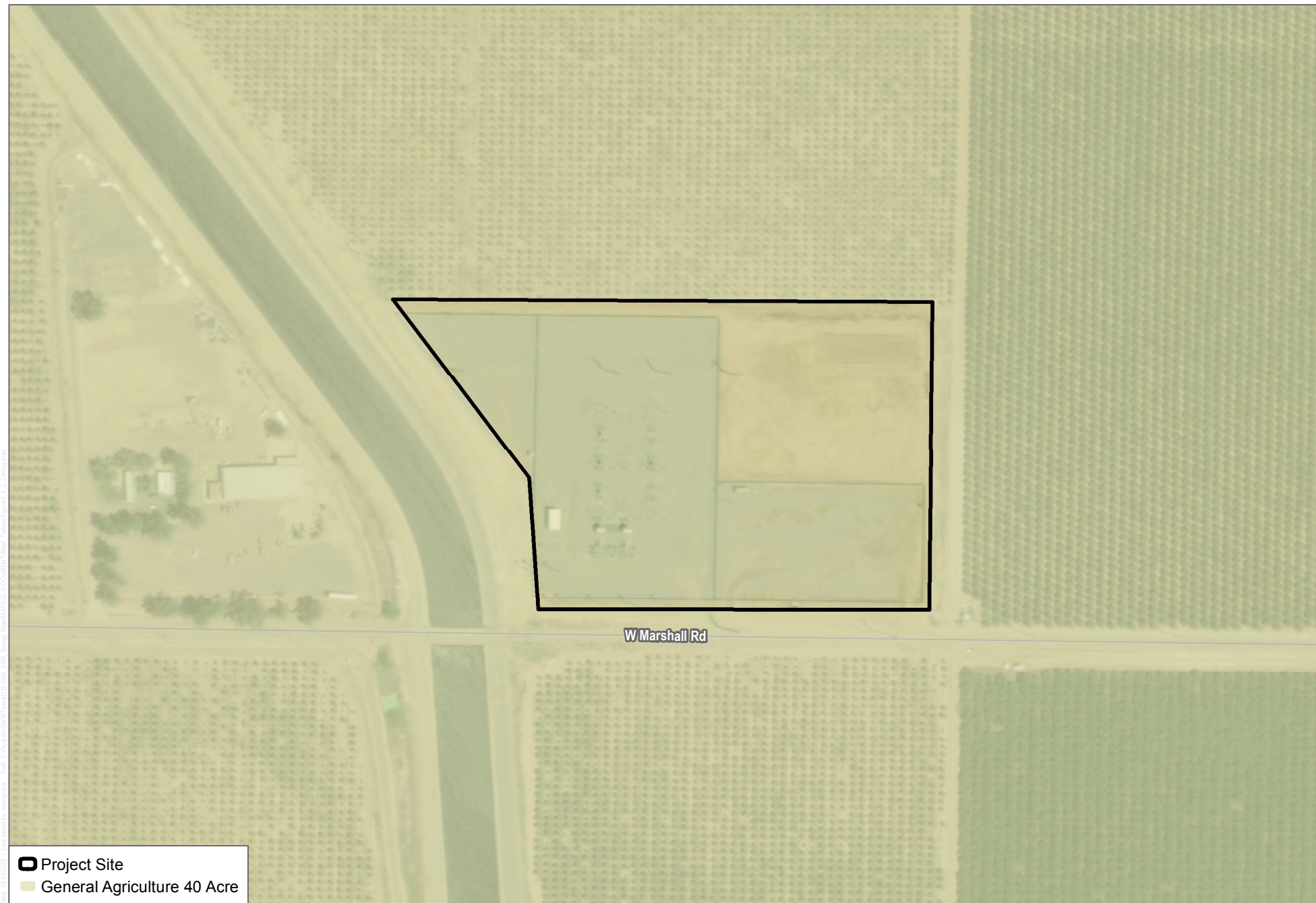
0 100 200 Feet

**FIGURE 3.5-1**

Existing General Plan Land Use Designations

Department of Water Resources - Strategic Reliability Reserve Environmental Review - Turlock Marshall Substation Site





SOURCE: DWR 2022; ESRI World Imagery 2021; Stanislaus County 2022

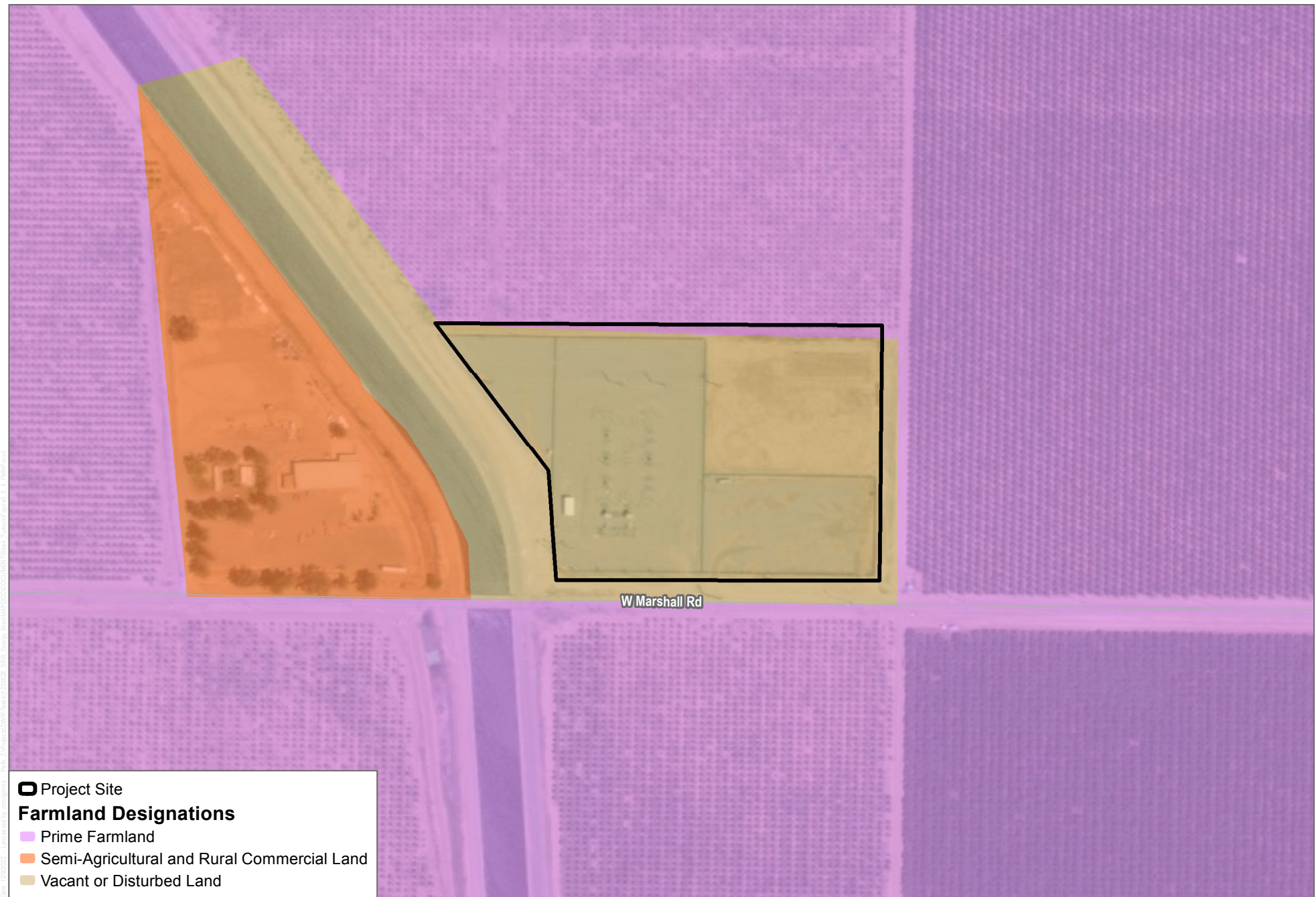




**FIGURE 3.5-3**

Existing Surrounding Land Uses





SOURCE: DWR 2022; ESRI World Imagery 2021; USDA 2016





SOURCE: DWR 2022; ESRI World Imagery 2021

**DUDEK**



0 400 800 Feet

**FIGURE 3.6-1**

**Noise Sensitive Receivers and Ambient Sound Level Measurement Locations**

Department of Water Resources - Strategic Reliability Reserve Environmental Review - Turlock Marshall Substation Site



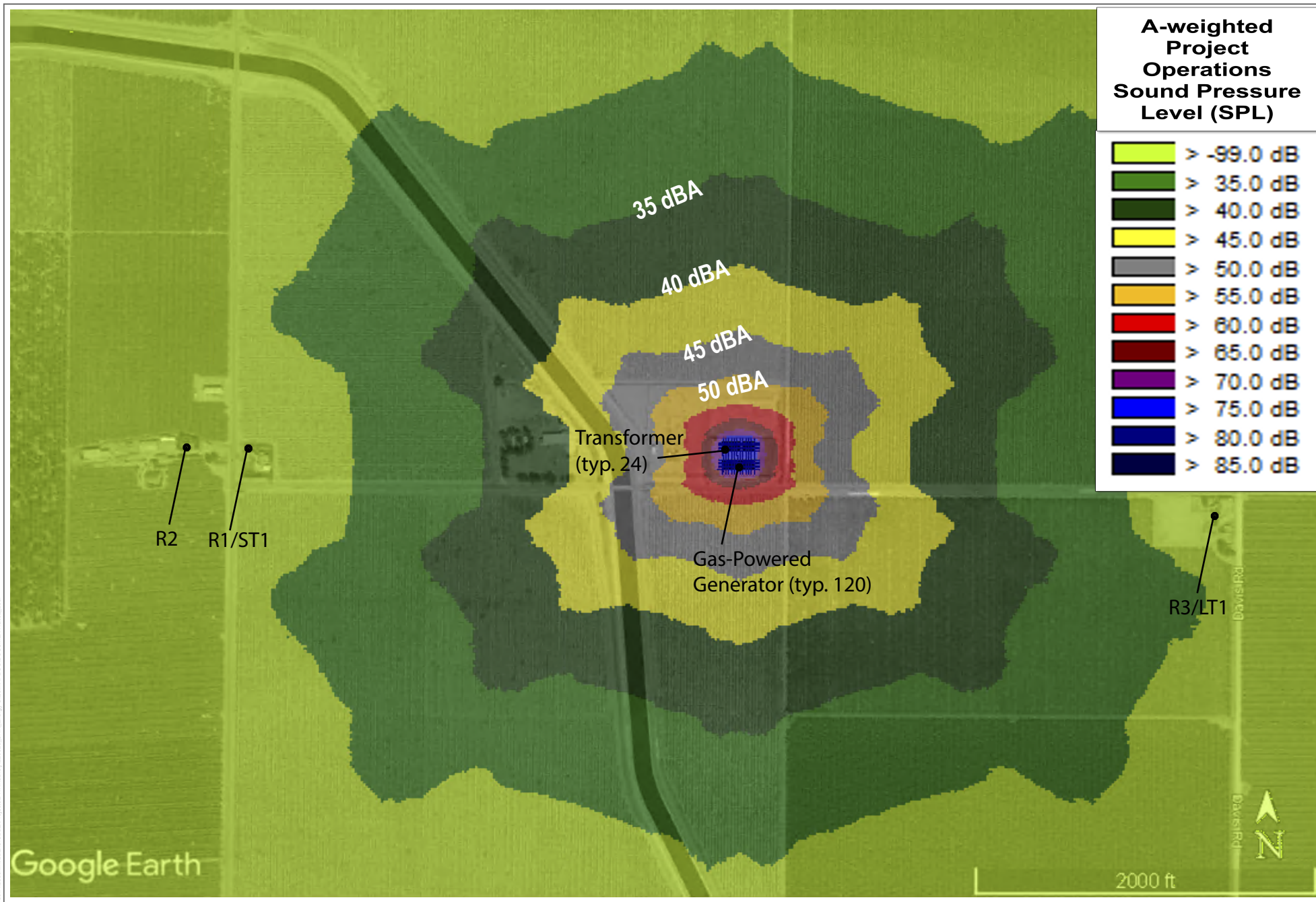


FIGURE 3.6-2

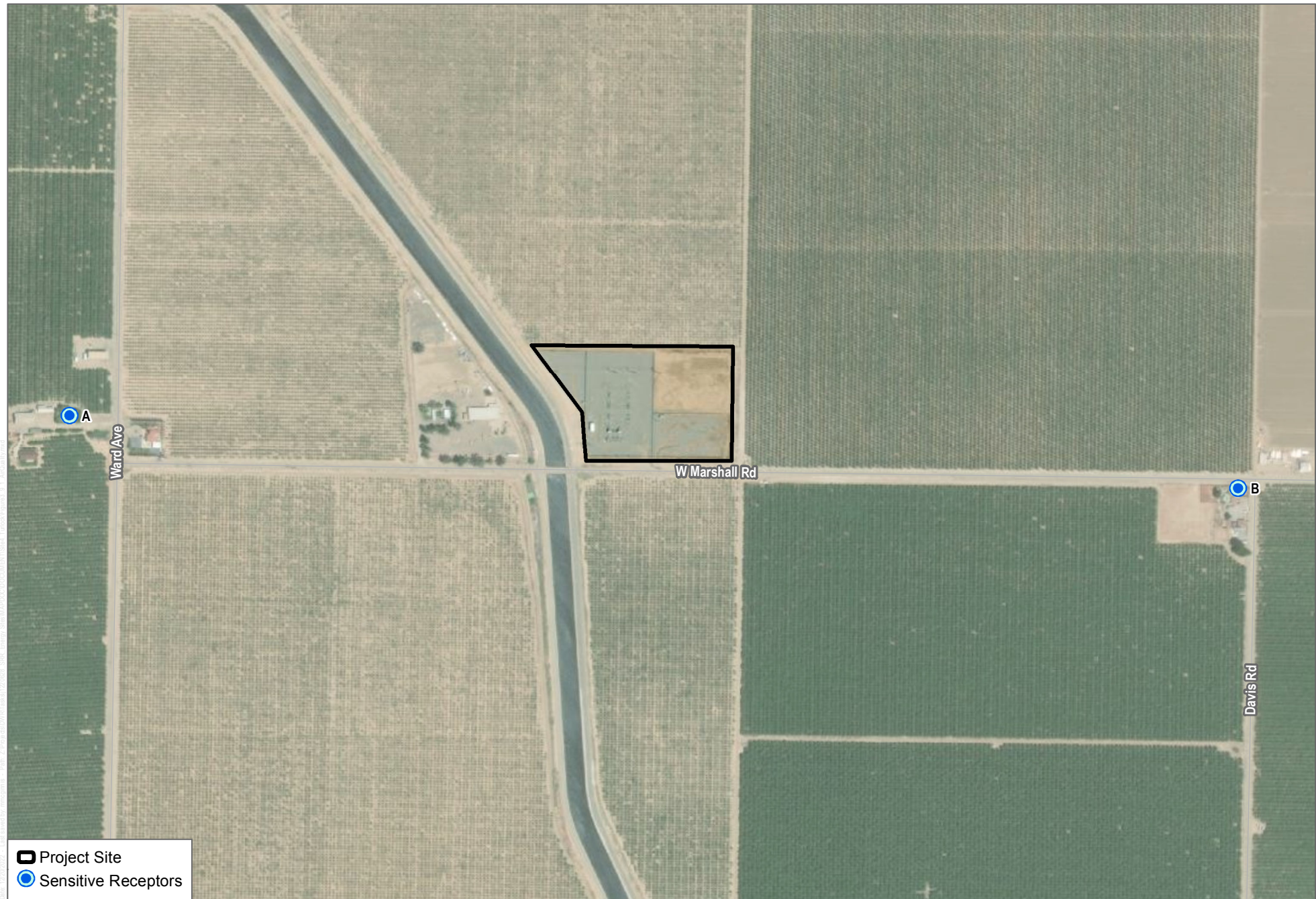
Aggregate Project Operational Noise Emissions

Department of Water Resources - Strategic Reliability Reserve Environmental Review - Turlock Marshall Substation Site



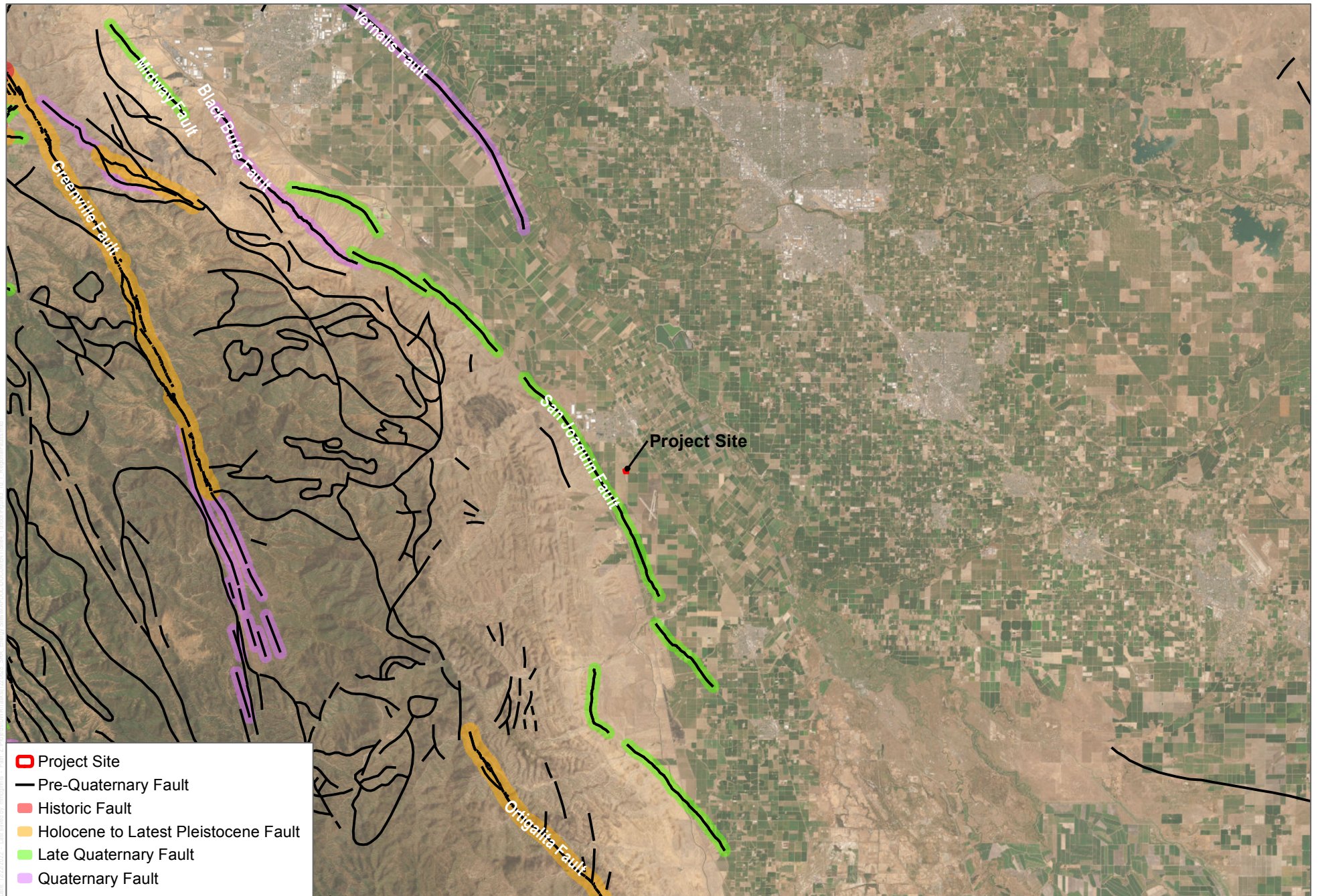






SOURCE: DWR 2022; ESRI World Imagery 2021





SOURCE: DWR 2022; ESRI World Imagery 2020; CA Geological Survey 2022





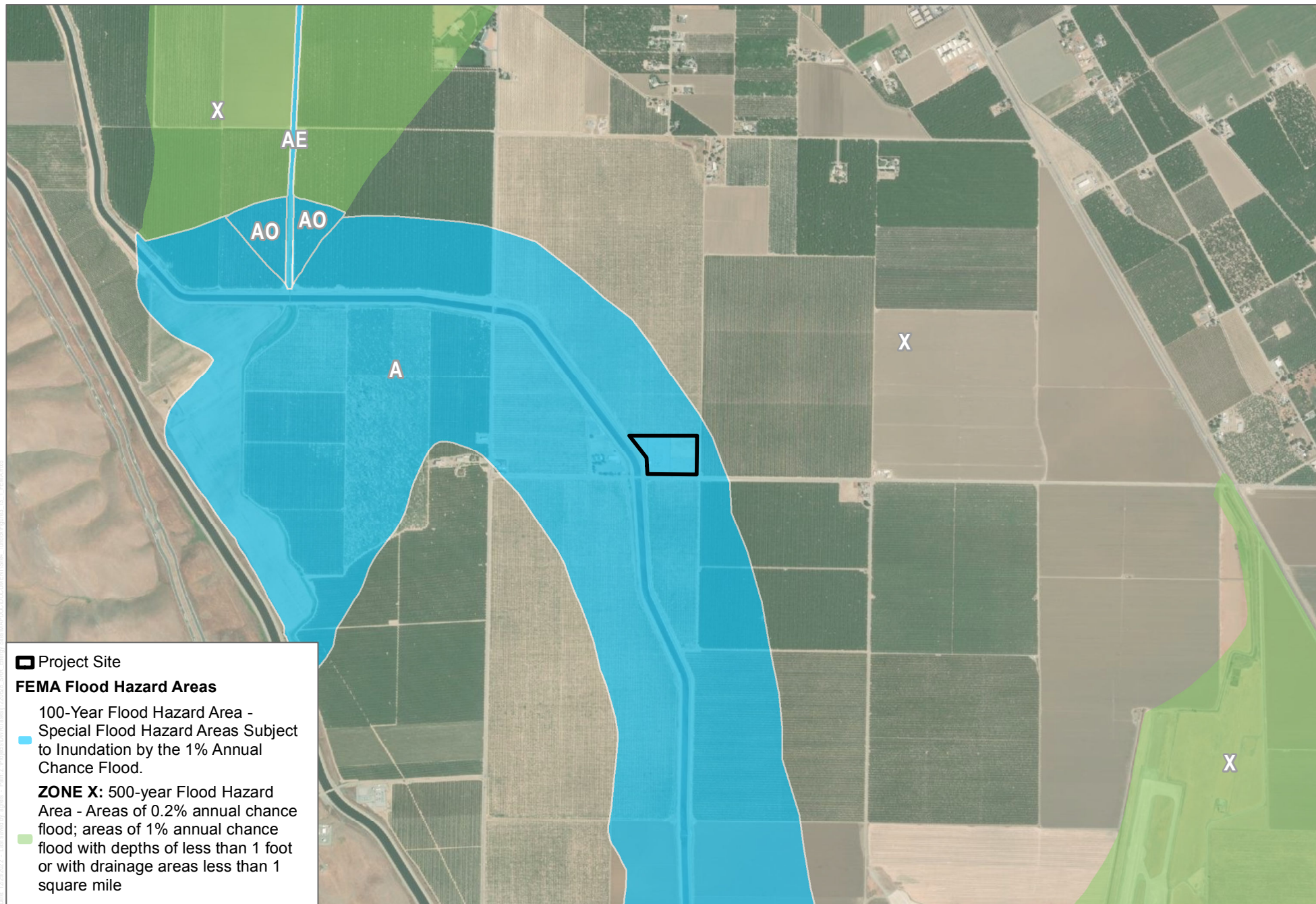
FIGURE 3.12-1A

Existing Conditions Key Map









SOURCE: DWR 2022; ESRI World Imagery 2020; FEMA

**FIGURE 3.13-1**  
**FEMA Flood Zones**