



11/13/2024

California County Café

– Specializing in Drought Resilience



Welcome and Setting Intention

Julia Ekstrom – California Department of Water Resources



On the Menu

Welcome and Setting Intention

→ The C3 Process – Reminder

→ Statewide SB 552 Status

Office Hours Follow-Up: **Responding to FAQs**

Theme for Today: **Planning for Short Term Response**

→ Sharing and Discussion

Closing

The C3 Process

- **Desired outcome** – Network and exchange ideas and resources among counties.
 - Increase the understanding of SB 552 intent and requirements.
 - Learn about different implementation approaches, practices, and experience.
 - Compare identified resource needs and share funding opportunities.
 - Improve coordination with other agencies and interested parties.
- **Our format** – Information exchange among counties to share information and approach to SB 552 implementation. (Café gatherings and Office hours)
- **Intended audience** – County staff.

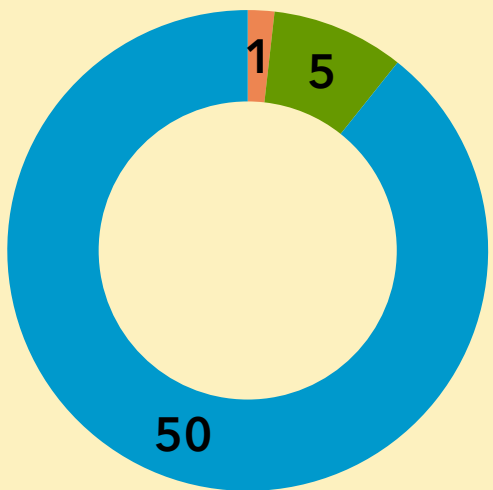
Appreciate others listening in but focusing on staff who are responsible for developing the DRP and implementing.

Essentials of the C3 Gathering

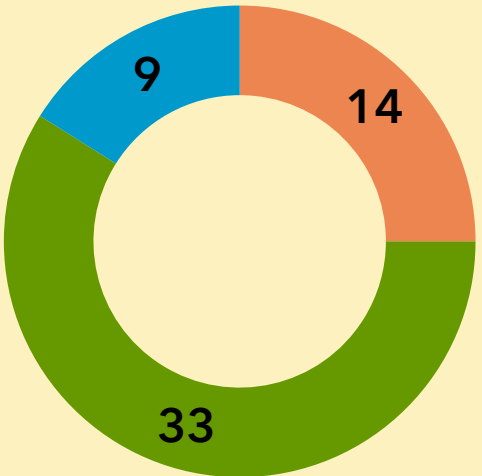
- ✓ Join the conversation – share your experience and learn from other perspectives and experiences.
- ✓ Make a connection – use the chat to connect with other participants.
- ✓ County focused – While all are invited to join, this gathering will focus on supporting county staff.

Statewide SB 552 Status

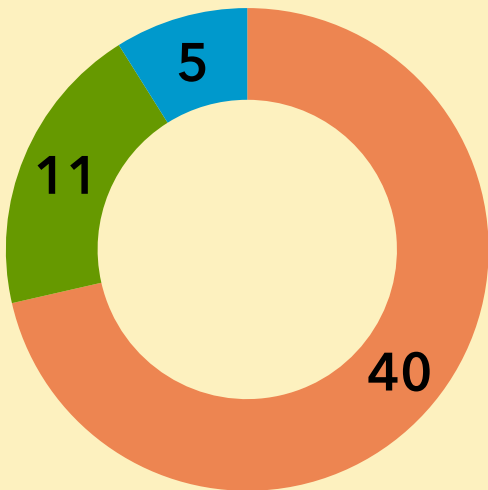
Task Force Formation



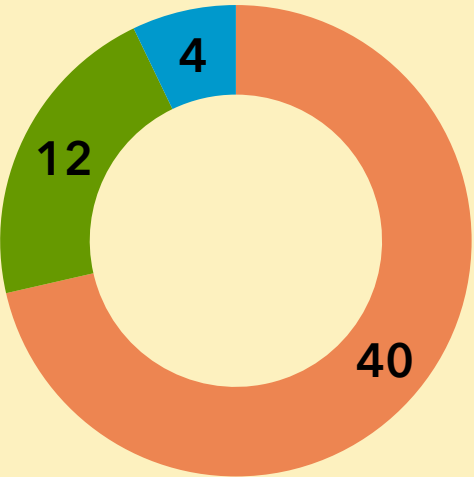
Risk Assessment



Response Actions and Mitigation Strategies



County Drought Resilience Plan Development



Not Started In Progress Completed

Source: 11/12/2024 data based on input from 56 counties enrolled in DWR's assistance program. Exclusions: The City and County of San Francisco are covered by other requirements, and one has not enrolled in DWR's assistance program.

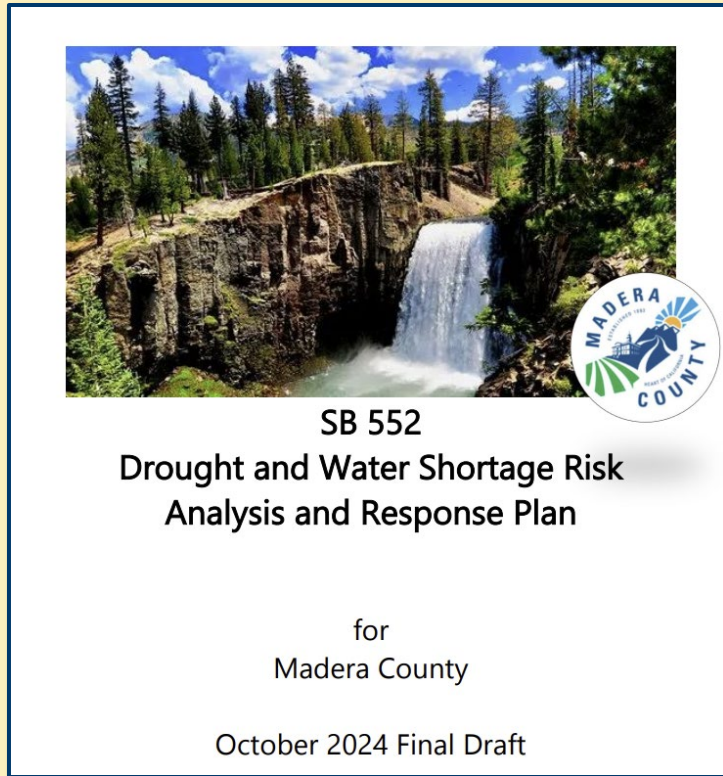




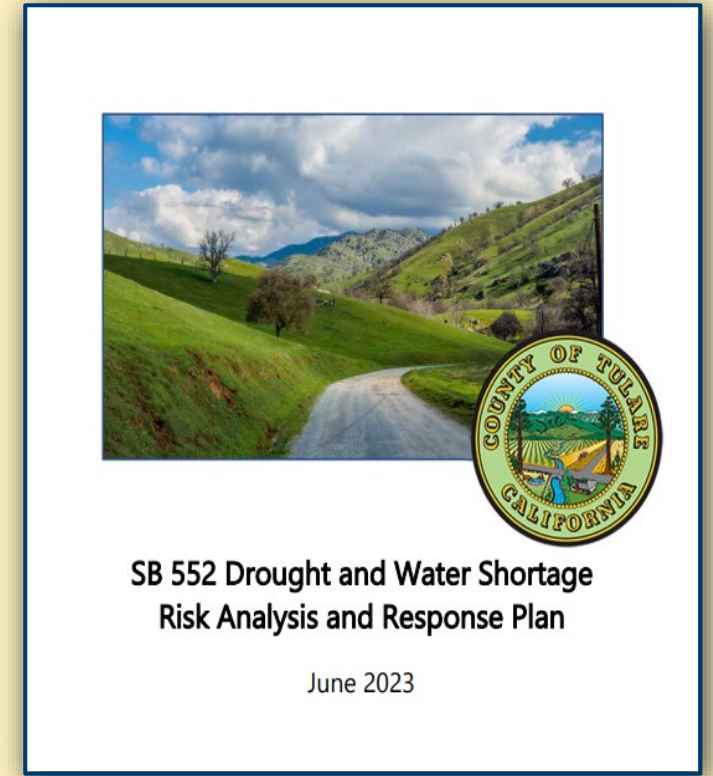
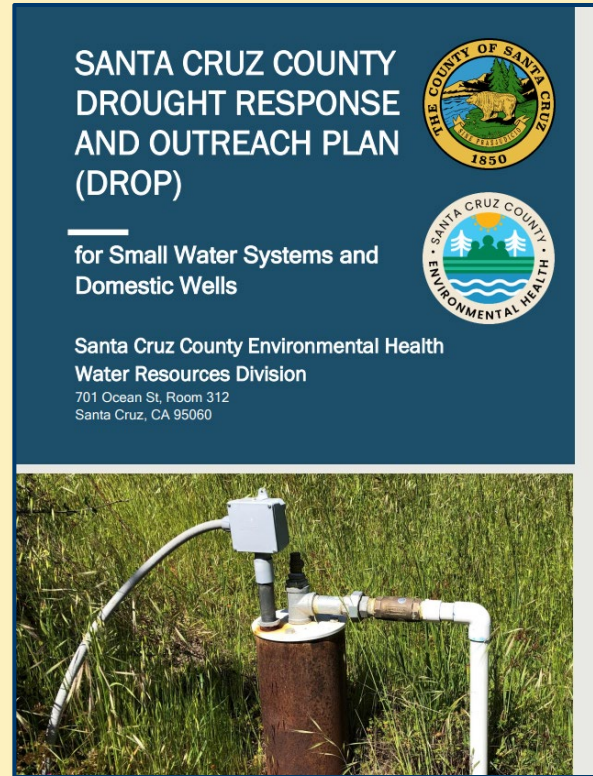
Responding to FAQs

Zoe Kanavas and Sarah Ko

Publicly Available DRPs

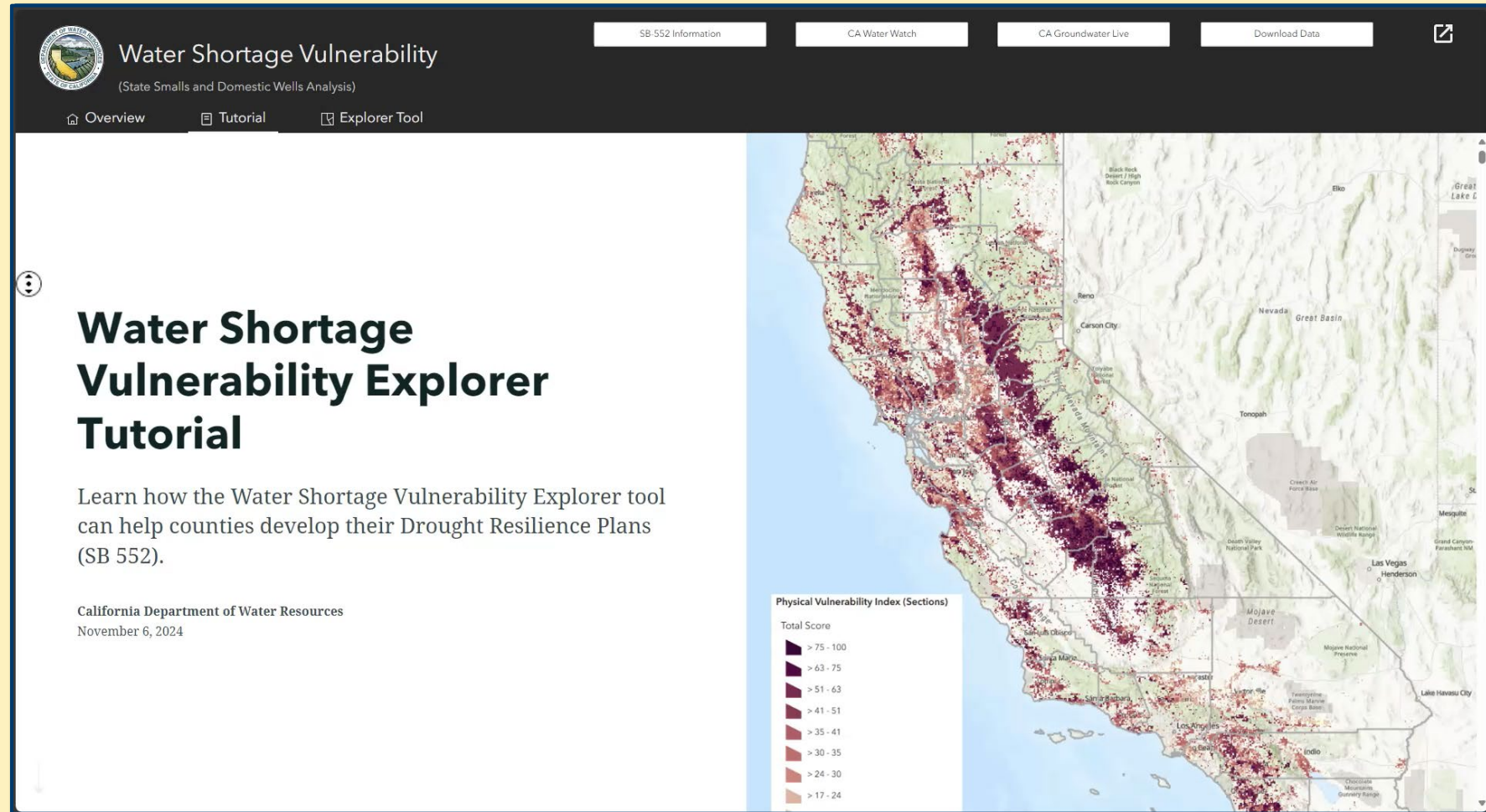


Plan went for Board of Supervisor approval on 11/12/24



Plan adopted in 2023. Working to augment plan through DWR's program.

NEW Water Shortage Vulnerability Tool



<https://experience.arcgis.com/experience/ae1b4e3e41004f07b4901a7a3fa50637/>

FAQ: What resources are available to the Counties to support outreach for domestic wells?


Educational materials to direct domestic well owners towards.

- DWR: Be Well Prepared
- SWRCB: GAMA – Domestic Well Owners
- EPA: Private Drinking Water Well
- RCAC: Individual Well Program
- CWC: Drinking Water Guide for Domestic Wells



Examples across counties:

Domestic Wells Resources




SANTA CRUZ COUNTY
ENVIRONMENTAL HEALTH

About UsProgramsPublic Records

Household Well Assistance

NEW HOMEPROGRAMSWATER RESOURCESDROUGHT RESPONSEHOUSEHOLD WELL ASSISTANCE



How Can The County Help Your Household Well?

Santa Cruz County has secured funding for several programs that can help household wells that have been impacted by drought.

Dry Well Assistance:

Well Sounding Services:

Water Quality Assistance:

Maintenance of Well Completion Reports:

How Can You Help Your Household Well?

There are many actions that you can take right now to help your household well adapt to Climate Change.


Get familiar with your well components:

Perform general maintenance on your well:

Conserve water:

Be aware of emergency resources:

Know what risk factors might affect your well:




NAPA COUNTY
CALIFORNIA

Search Napa County...

Groundwater AgencyLocal GroundwaterGet InvolvedFAQsDocuments & Resources

Do-It-Yourself (DIY) Groundwater Monitoring



Home > Departments > Planning, Building & Environmental Services > Natural Resources Division > Groundwater Sustainability > Local Groundwater > Resources for Well Owners

Resources for Well Owners

Dry or Damaged Wells

- Has your well run dry? [Report it here.](#)
- [What to do if your well is no longer producing water](#)
- [Well and Treatment System Contractors](#)

Well Owners Guide PDF

A [printable guide](#) that covers well construction, maintenance, and water quality protection for private well owners in Napa County.

Be Well Prepared


Learn about the Department of Water Resources program, which empowers domestic drinking water well users by providing the information and resources they need to maintain a safe and reliable household water supply.

Do-It-Yourself Groundwater Monitoring

ButteCounty
CALIFORNIA

GOVERNMENTDEPARTMENTS SERVICES COMMUNITY HOW DO I...

Search...



Private Water Wells:
Residential & Ag

Public Water Systems

Water Sampling

Water Well Maintenance & Care

Home > Departments > Departments M to Z > Public Health > Environmental Health > Drinking Water > Water Well Maintenance & Care

Water Well Maintenance & Care

Like any other aspect of property ownership, wells require regular, ongoing maintenance. Well-maintenance is important to the health of your family and property. Once a well is installed, maintenance of your well and regular testing of your water will help ensure your water is of high quality and safe to use. It is your responsibility to maintain your well, monitor your water quality and help protect the quality of drinking water in Butte County. Regular maintenance will not only ensure the safety of your water but will also alert you to any problems that need attention and ensure the continued efficient operation of your well.

Access the [Butte County Water and Resource Conservation](#) page for more information.

Water Well Resources



FAQ: What can be done to address limited or lack of reporting on domestic well/State Small Water System related issues?

- *Distrust of potential information misuse (fear of enforcement, impact to property value, family dynamics, etc.)*
- *Lack of awareness and knowledge about available reporting process and opportunities to receive support*
- *Limited local resources to address identified issues*

THE BENEFITS OF REPORTING

- ✓ **Be proactive** and attend to issues ahead of drought and water shortage emergencies
- ✓ Enhances **local long-term planning** and future water shortage resilience of the community
- ✓ Allows the State to **prioritize regions in need** as funding becomes available

ADDRESSING REPORTING ISSUES

- ✓ Partner with trusted third parties (SHE, RCAC) to promote reporting and connection to resources
- ✓ Provide Incentive Programs (free well testing kits)
- ✓ Outreach and Education
 - Provide links to local and state resources on a dedicate webpage
 - Clarify how the data is being used for (Well Completion Reports, Internal County Databases, GSPs, etc.)

REPORTING RESOURCES

- ✓ My Dry Well → mydrywell.water.ca.gov
- ✓ County website and Community Based Organizations partners (SHE, RCAC)

FAQ: Who is specifically covered under SB 552 requirements and what are some opportunities to incorporate and support other local systems through this planning process?

While not required, some counties have addressed small supplier needs in their drought planning process.

Small Suppliers*

- 1,000-2,999 connections + schools: Water shortage contingency plan (by July 2023)
- <1,000 connections: Drought assessment/element for 15-999 connections into Emergency Response Plan or Emergency Notification Plan
- All Small Suppliers: Supply conditions & production annual reporting
- All Small Suppliers: Drought resiliency standards – infrastructure upgrades

*Includes water suppliers serving less than 3,000 connections and 3,000 Acre Feet. Includes non-transient, non-community water systems serving schools; excludes those covered under current Urban Water Management Plan

Resources:

- General questions on SB 552 requirements – Reference the [**DWR County Drought Resilience Plan Guidebook**](#)
- For specific questions about your county – Reach out to DWR at [**CountyDRP@water.ca.gov**](mailto:CountyDRP@water.ca.gov)



Planning for Short-term Response

Orit Kalman - Facilitator

Short-term Response Actions and Long-Term Mitigation Actions

SB 552 requires that each county develop a drought and water shortage plan that includes proposed interim solutions for state small water systems and domestic wells, per CWC Section 10609.70:

*(b) A county shall develop a plan that includes potential drought and water shortage risk and **proposed interim** and long-term **solutions for state small water systems and domestic wells within the county's jurisdiction**. The plan may be a stand-alone document or may be included as an element in an existing county plan, such as a local hazard mitigation plan, emergency operations plan, climate action plan, or general plan. A county shall consult with its drought task force or alternative coordinating process as established by this section in developing its plan.*

A county shall consider, at a minimum, all of the following in its plan:

- (1) Consolidations** for existing water systems and domestic wells.
- (2) Domestic well drinking water mitigation programs.**
- (3) Provision of emergency and interim drinking water solutions.**
- (4) An analysis of the steps necessary to implement the plan.**
- (5) An analysis of local, state, and federal funding sources** available to implement the plan.

The above includes short-term response actions and long-term mitigation actions.

Short-term Response Actions

Short-term response actions recognize the vulnerability and the need to expeditiously mitigate impacts during the early stages and during ongoing drought conditions and water shortage events.

- Mutual Aid Agreements
- Intertie activation
- Permit Streamlining and Coordination
- Partnership with Non-Governmental Organizations
- Emergency and Interim Drinking Water Supplies
- Dedicated Water Filling Stations by Large Water Purveyors
- Treatment of Available Water from Alternate Sources that Are Not Typically Used
- Packaged or Bottled Water
- Water Hauling or Bulk Water Delivery

What you said about...

Outreach methods used to inform residents about water shortage and conservation:

- ✓ **County Website**
- ✓ Social media
- ✓ Email and listserv
- ✓ Fact sheets, flyer, and direct mail
- ✓ Community meetings
- ✓ Phone calls, text alerts/mobile apps
- ✓ local media (press releases, radio, television, and newspaper)

Agencies or organizations to collaborate with during water shortage emergencies:

- ✓ **Local water agencies**
- ✓ **Emergency management agencies**
- ✓ State Agencies: State(Regional) Water Resources Control Board(s), DWR, CalOES
- ✓ NGOs/non-profits
- ✓ Local Flood and Water Conservation District
- ✓ Neighboring cities and counties

What you said about...

Short-term response actions implementation challenges:

- ✓ **Resource Limitations:** Limited funding, staffing shortages/turnover, and a shortage of certified water haulers.
- ✓ **Coordination and Communication Barriers:** Limited agency coordination, siloed departments, communication challenges, and public reluctance to engage with government.
- ✓ **Technical and Infrastructure Challenges:** Issues with existing infrastructure and limited experience managing water shortage events at the county level.
- ✓ **Administrative and Political Obstacles:** Political and administrative challenges and difficulty identifying a responsible coordinating agent.
- ✓ **Rural Accessibility Challenges:** The county's rural nature and limited internet access, making it hard to reach individuals in need.

Lessons learned from past water shortage emergencies:

- ✓ **Address Staffing and Coordination Needs:** Ensure sufficient staffing for funding pursuits, coordinated drought management, and tracking tools for drought conditions across county departments (e.g., OES, Planning) and agencies.
- ✓ **Enhance Disaster Preparedness for Water Security:** Recognize the impact of wildfires and power outages on water systems and domestic wells; prioritize updating water resiliency infrastructure and proactive disaster preparedness.
- ✓ **Increase Funding and Resources:** Secure additional funding and resources to support drought and water management efforts, including quick responses for dry wells and expanded storage options with interties.
- ✓ **Develop Comprehensive Drought Resilience Practices:** Create a Drought Resiliency Plan with best practices, resource identification, and a strategy that considers event duration, resource limitations, and key stakeholders.
- ✓ **Streamline Well Application and Stakeholder Involvement:** Review well applications effectively and clarify roles and responsibilities ("the WHO") in drought response efforts.

Short-term Response Actions

Denise England, Tulare County Resource Management Agency

Brendan McGovern, Napa County

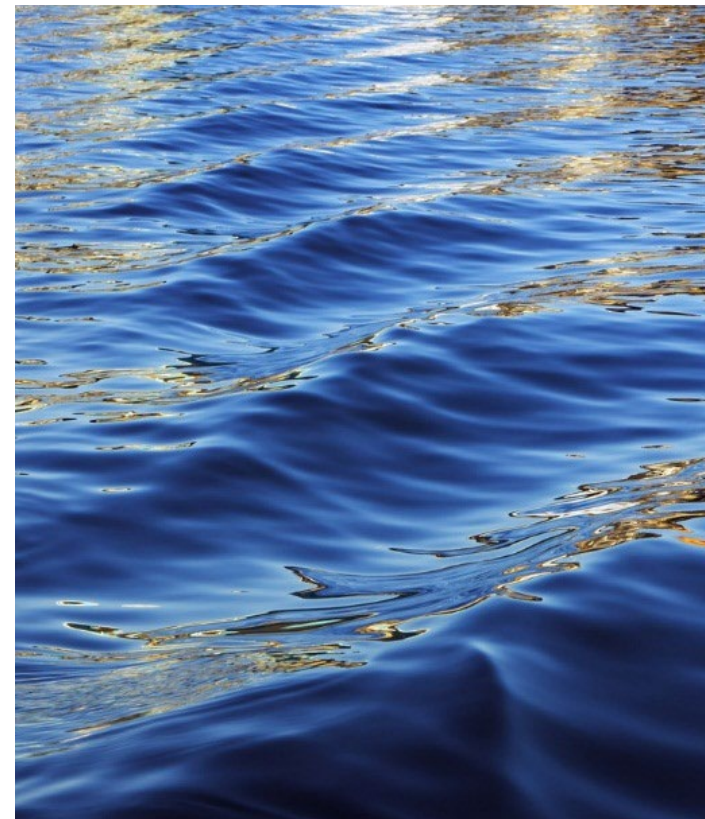
Sabrina Snyder, Yolo County

Jason Johnston, Santa Barbara County



Tulare County SB 552 Water Shortage Response

Denise England
Grants & Resources Manager
Tulare County Resource Management Agency



Water Shortage Response

*Dependent on Funding

- Agreements
- Inventory
- Activation
- Tooleville Case Study



Agreements

- Service Providers
- Supply Chain
- Water Supply




Inventory/Supply Chain

- Tanks
- Bottled Water Delivery
- Pumps



Activation

- How do residents access assistance?
- How is assistance deployed?

 [HOME](#) [ABOUT US](#) [PROGRAMS](#) [NEWS & MULTIMEDIA](#) [GET INVOLVED](#) [CONTACT US](#) [DONATE](#) [f](#) [in](#) [p](#) [Q](#)

Water Sustainability

559-802-1685
DROUGHTSUPPORT@SELFHELPENTERPRISES.ORG

Well Assessment - Drought Support
Fields marked with an * are required

Eligibility Questions

1. Do you live on the property where the well is located? *
☐ Yes
☐ No
2. Do you rent or own? *
☐ Own
☐ Rent
3. Do you use or plan to use the well for drinking water? *
☐ Yes
☐ No
4. Is the well used for agricultural purposes? *
☐ Yes
☐ No
5. Have you ever participated in a SHE well program before? *

Case Study- Tooleville

- History
 - Mutual Water Company
 - Consolidation with City of Exeter (3 miles away)
 - Water Quality
 - Water Quantity
 - Higher Water Demand
 - Evaporative coolers
 - Aging plumbing fixtures



Case Study- Tooleville



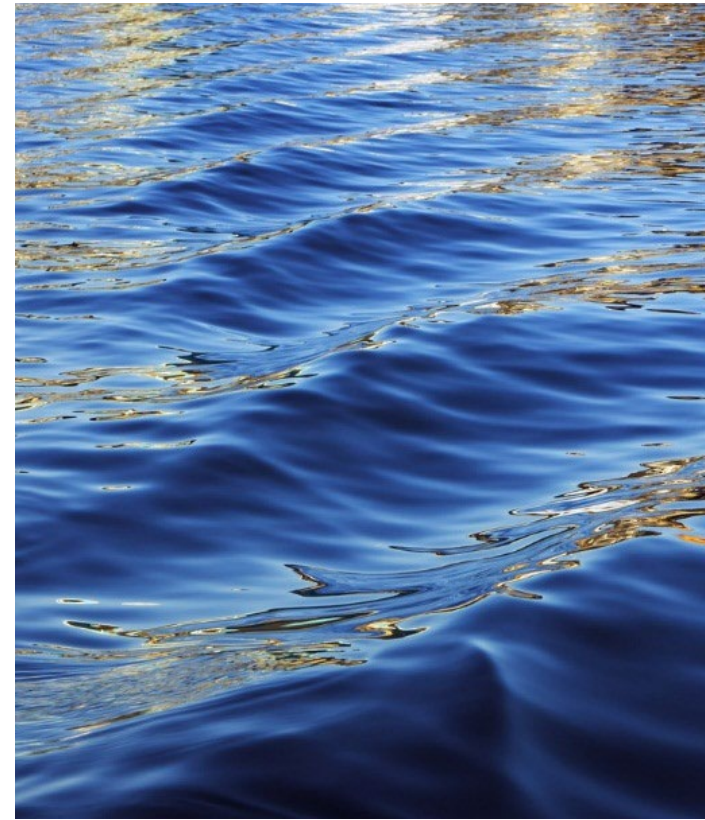
- Interim Solutions
 - Hauled water to community tank
 - Bottled water delivery
 - Water efficiency retrofits
- Long Term Solution
 - Consolidation with the City of Exeter



Questions

Contact

Denise England
Dengland@tularecounty.ca.gov
(559)624-7000



Planning, Building & Environmental Services

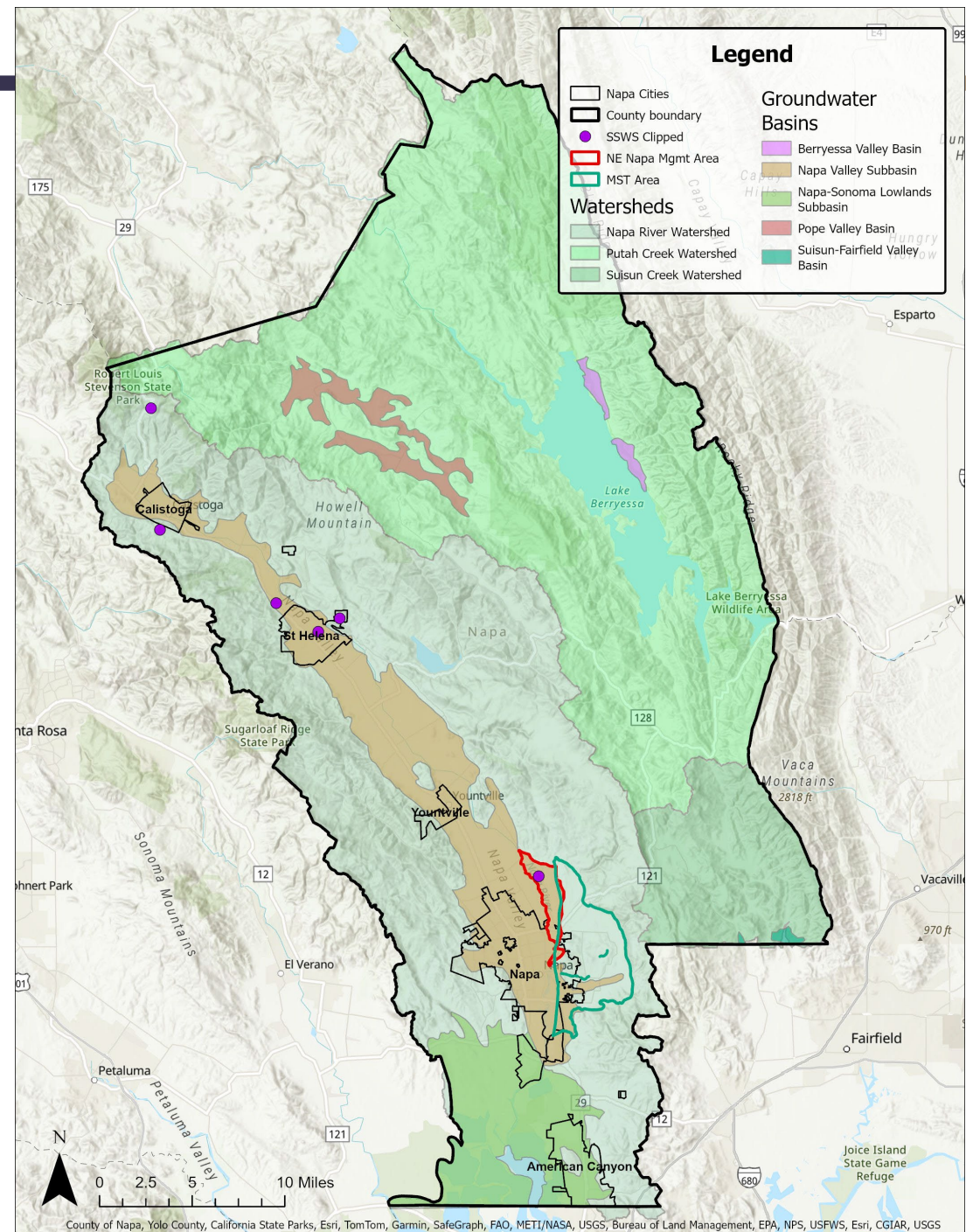
SB 552 – California County Café Short-term Response Planning

Brendan McGovern, Principal Planner



County Overview

- 5 State Small Water Systems
- About 5,746 domestic wells
 - 5,156 in Napa River Watershed
- Groundwater Deficient Areas
 - Milliken-Sarco-Tulucay Area
 - Groundwater Ordinance in place
 - NE Napa Management Area
 - Groundwater Ordinance likely




Coordination with County Office of Emergency Services and other departments

- Planning, Building, and Environmental Services Dept.
 - Environmental Health Division
 - Responsible for Water Systems and Well Permits
 - Engineering Division
 - Planning Division
 - Napa County Groundwater Sustainability Agency
- Office of Emergency Services
- Coordination with City of Napa



Short-term Response Actions

Action	Category	Description	Lead Entity
Packaged or Bottled Water	Emergency and interim drinking water solution	Short-term transportation of packaged or bottled water. The County will coordinate the procurement and delivery of packaged water to identified drop off areas.	Napa County, OES and PBES
Water Hauling	Emergency and interim drinking water solution	The County will establish a list of vendor contacts that domestic well owners or SSWS communities can contact to provide hauled-water services.	Napa County, PBES
Expedite Well Replacement Permits	Planning and Engagement	When a drought emergency is declared, the County will continue to expedite the permitting to replace wells that have run dry.	Napa County, PBES
Implement Water Conservation Workplan	Water mitigation programs	The County will implement the Napa County Water Conservation Workplan: A Guide for Vineyards, Wineries and Other Water Users (LSCE and ERA 2024). This includes issuing guidelines and working with domestic well owners and SSWS users to promote and conserve water around their households (including reducing indoor and outdoor water uses where practical and feasible).	Napa County, PBES
Well Sounding (Water level meter)	Planning and Engagement	County will continue to encourage the domestic well owners to measure the depth-to-water during a drought or water emergency.	Napa County, PBES
Vendors Contact Information	Planning and Engagement	County will provide domestic well owners and SSWS with contact information for vendors who can supply personnel, equipment, materials, and/or associated services to restore dry wells.	Napa County, PBES
 Napa County	Planning and Engagement	County will work with the Task Force and local entities to distribute educational materials and to hold public meetings as necessary.	Napa County, PBES and PIO

Thank you

Brendan McGovern

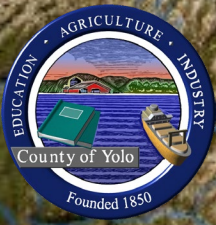
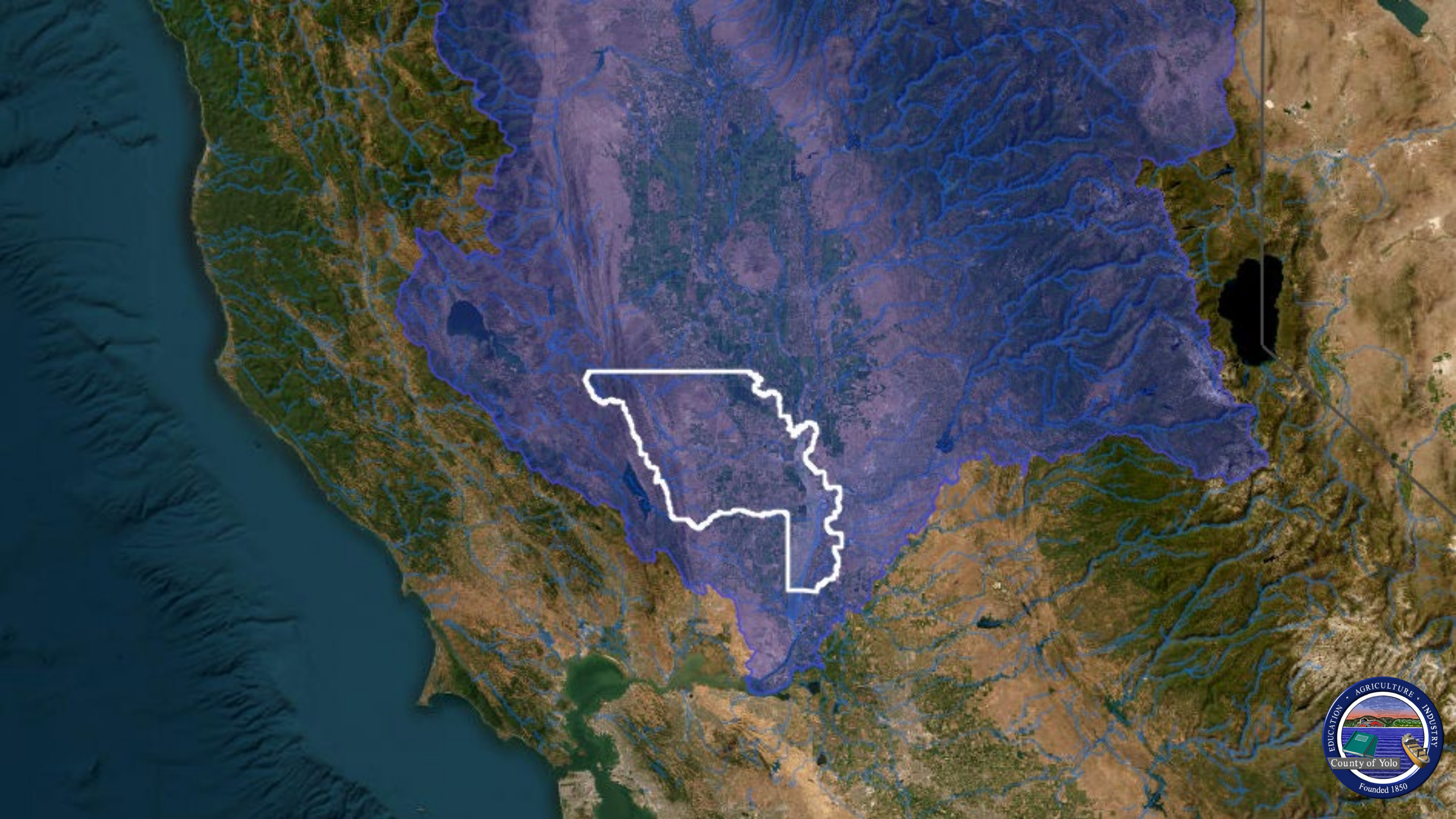
Brendan.McGovern@countyofnapa.org

countyofnapa.org

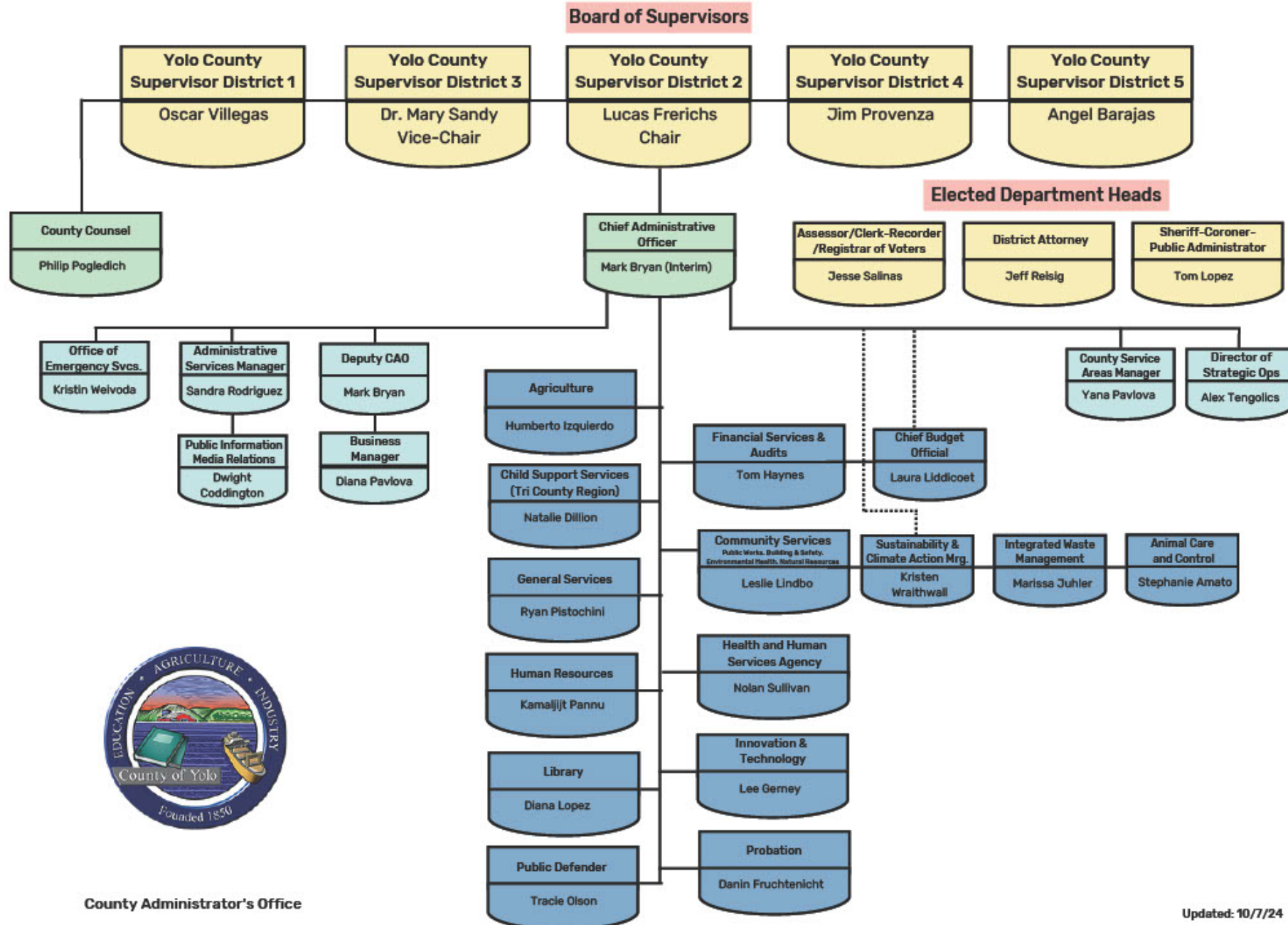


@countyofnapa





COUNTY RESIDENTS



County Administrator's Office



Updated: 10/7/24



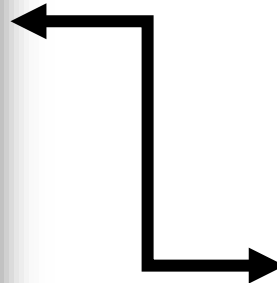
This document outlines the response expectations of Yolo County due to drought emergencies and serves as a Support Annex to the Yolo County Emergency Operations Plan

Yolo County Drought Support Annex

Annex to the Yolo County
Emergency Operations Plan

Version 1.0

August 2024



This document is a support annex to local
Emergency Operations Plans

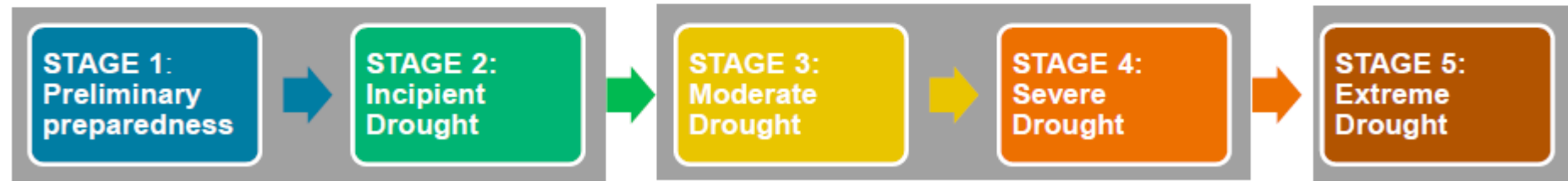
2023 YOLO COUNTY OPERATIONAL AREA HAZARD MITIGATION PLAN

[VOLUME 1]

December 2023



Short Term Response Actions/Roles and Responsibilities



[Draft Assigned Roles Spreadsheet](#)



Santa Barbara County

November 13, 2024 County Café Presentation

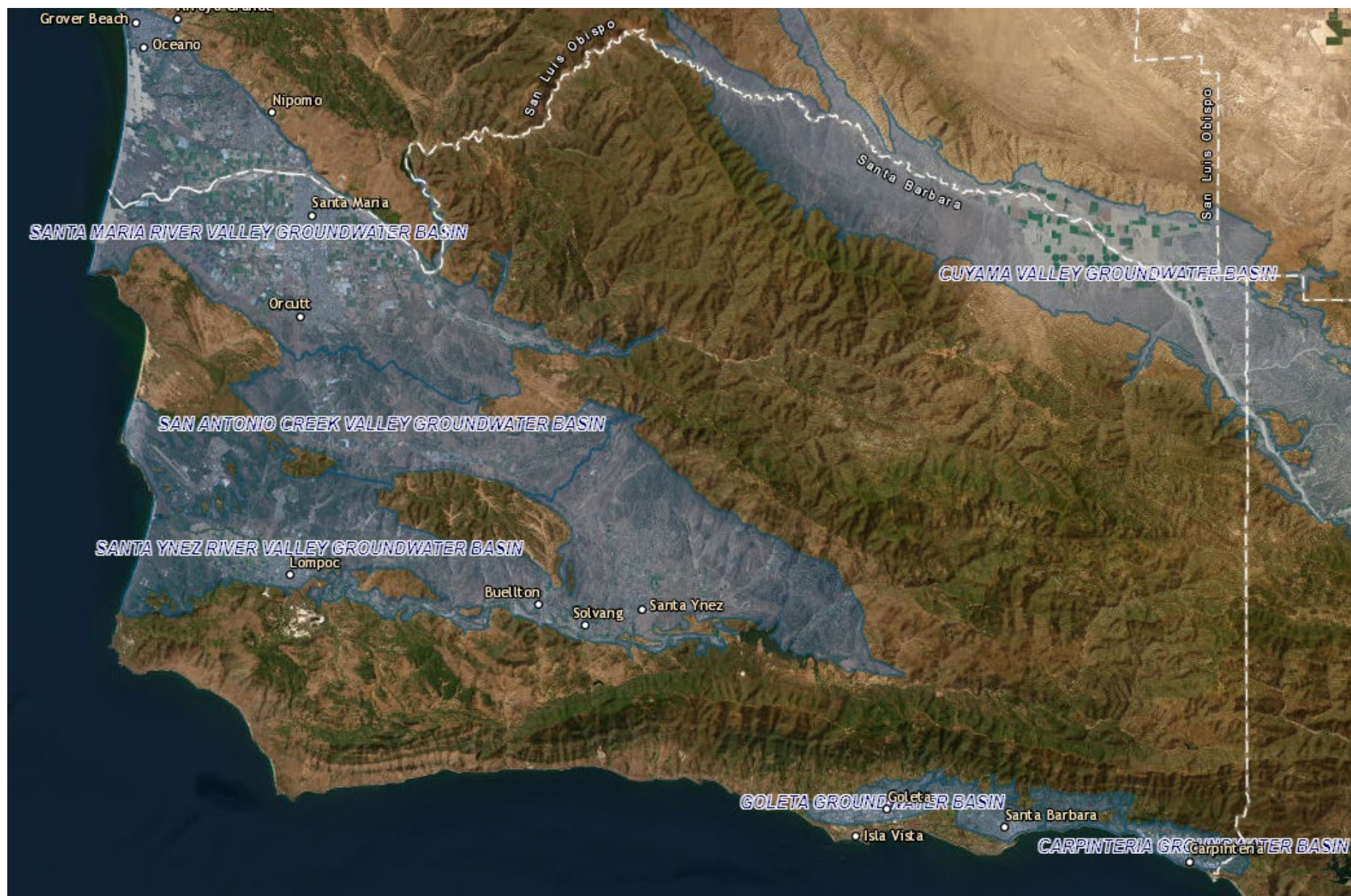
Coordination Efforts Related To Short-term Response Actions



Current Coordination

- Santa Barbara County Office of Emergency Management
- Santa Barbara County Public Health, Environmental Health Services
 - Well Permitting Agency – Unincorporated areas of County
 - Local Primacy Agency, and permitting agency for private water systems in unincorporated areas
- County Water Agency, County of Santa Barbara Public Works Department
 - Member of, or in coordination with five Groundwater Sustainability Agencies in County





Short-term Response Actions Discussion

1. How are you planning for short term response and what is their actual experience from last drought?
2. What are some practical strategies that can be used to support rural communities?
3. Are there any unexpected partners that have been found to be valuable for identifying short-term mitigation?

Resources:

- General questions on developing short-term response actions – Reference the [DWR County Drought Resilience Plan Guidebook](#)
- For specific questions about your county – Reach out to DWR at CountyDRP@water.ca.gov



Polling: What should we discuss at our next gathering?

Please add in the chat **your most pressing topic** that you would like to be discussed next in the County Café Gathering.

Upcoming Counties Discussion Opportunities:

December 18, 2024, 9-10am : Office Hours

January 22, 2025, 9-10am : California County Café Gathering



Closing – Thank you!

Next steps – we will follow up with an email to counties for future gatherings, ppt, invitation to share in upcoming gathering.