



5/28/2025

# California County Café

– Specializing in Drought Resilience



# Welcome and Setting Intention

*Julia Ekstrom – California Department of Water Resources*





# On the Menu

Welcome and Setting Intention

→ The C3 Process – Reminder

→ Statewide SB 552 Status

Theme for Today: **Support for System Consolidation**

→ Sharing and Discussion

Closing

# The C3 Process

- **Desired outcome** – Network and exchange ideas and resources among counties.
  - Increase the understanding of SB 552 intent and requirements.
  - Learn about different implementation approaches, practices, and experience.
  - Compare identified resource needs and share funding opportunities.
  - Improve coordination with other agencies and interested parties.
- **Our format** – Information exchange among counties to share information and approach to SB 552 implementation. (Café gatherings and Office hours)
- **Intended audience** – County staff.

*Appreciate others listening in but focusing on staff who are responsible for developing the DRP and implementing.*

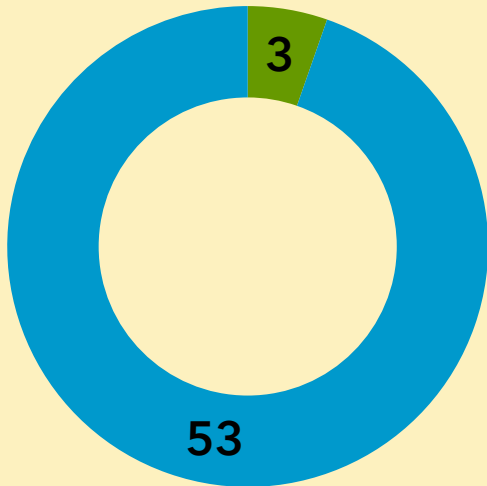


# Essentials of the C3 Gathering

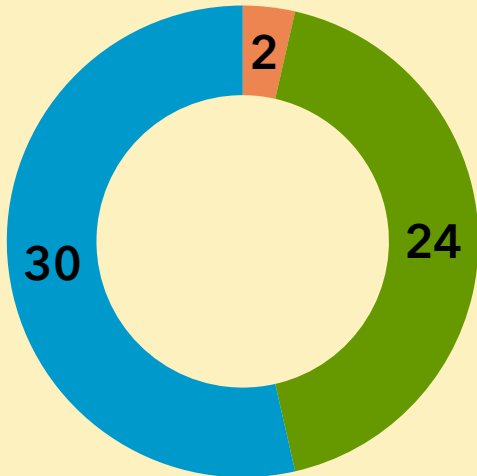
- ✓ Join the conversation – share your experience and learn from other perspectives and experiences.
- ✓ Make a connection – use the chat to connect with other participants.
- ✓ County focused – While all are invited to join, this gathering will focus on supporting county staff.

# Statewide SB 552 Status

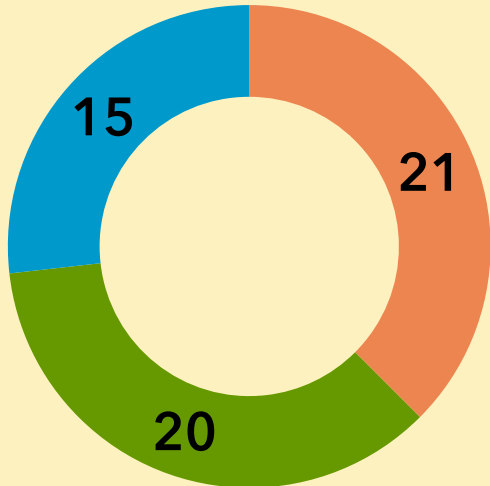
Task Force Formation



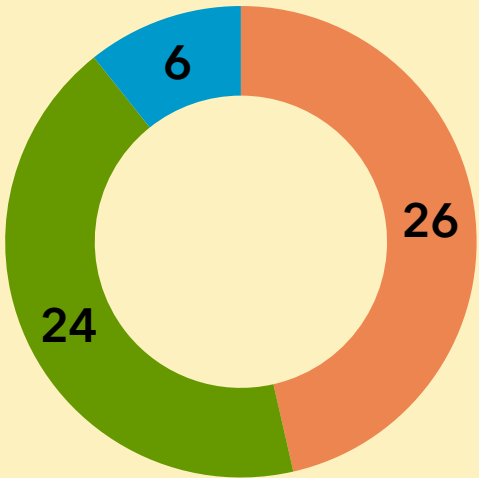
Risk Assessment



Response Actions and Mitigation Strategies



County Drought Resilience Plan Development



Not Started In Progress Completed

Source: 5/27/2025 data based on input from 56 counties enrolled in DWR's assistance program. Exclusions: The City and County of San Francisco are covered by other requirements, and one has not enrolled in DWR's assistance program.





# System Consolidation Support

*Orit Kalman - Facilitator*





# Consolidation Consideration Requirement

SB 552 requires that each county develop a drought and water shortage plan that includes proposed interim solutions for state small water systems and domestic wells, per CWC Section 10609.70:

*(b) A county shall develop a plan that includes potential drought and water shortage risk and proposed interim and long-term solutions for **state small water systems and domestic wells within the county's jurisdiction**. The plan may be a stand-alone document or may be included as an element in an existing county plan, such as a local hazard mitigation plan, emergency operations plan, climate action plan, or general plan. A county shall consult with its drought task force or alternative coordinating process as established by this section in developing its plan.*

**A county shall consider, at a minimum, all of the following in its plan:**

- ➡ **(1) Consolidations** for existing water systems and domestic wells.
- (2) Domestic well drinking water **mitigation programs**.
- (3) Provision of **emergency and interim drinking water solutions**.
- (4) An analysis of the steps necessary to **implement** the plan.
- ➡ (5) An analysis of local, state, and federal **funding sources** available to implement the plan.

# Consolidation – The Role of the County

## What is the role of Counties in supporting system consolidation

- Education and outreach
- Help identify consolidation opportunities and facilitate discussions
- Help identify possible funding sources



Has your county identified opportunities for consolidation as means to improve long term water shortage reliability? (Please respond in the zoom poll)

# STATE WATER RESOURCES CONTROL BOARD

## *Division of Financial Assistance*

May 28, 2025

Karmina Padgett, Senior Water Resource Control Engineer



*“Preserve, Enhance, and Restore California’s Water Resource”*



# DRINKING WATER FUNDING LONG-TERM SOLUTIONS

- Funding for planning and construction projects to implement drinking water infrastructure projects needed to achieve or maintain compliance with Safe Drinking Water Act requirements
- Grants and low-interest loans
- Priority given to projects addressing Categories A-C or consolidation
- Funding for lead service line inventory and replacement.

## PROGRAMS:

- Drinking Water State Revolving Funding (DWSRF)
- Safe and Affordable Funding For Equity and Resilience (SAFER)
- Expedited Drinking Water Grant (EDWG) Funding Program!
- Lead Service Line Replacement (LSLR) Funding Program



Photos: Seville Drinking Water Project

# DRINKING WATER FUNDING

## INTERIM SOLUTIONS

- Funding for projects that address urgent drinking water needs
- Eligible projects include bottled/hailed water, well repair, well rehabilitation and replacement, vending machines, point-of-use devices, emergency interties, or treatment systems
- Public water systems, state small water systems and domestic wells serving disadvantaged communities and low-income households

### PROGRAMS:

- Safe and Affordable Funding For Equity and Resilience (SAFER)



Photos: 1) Point of Use Installation and 2) Drinking water vending machine installed at Pixley Public Utility District

# TECHNICAL ASSISTANCE FUNDING PROGRAM

- Provides technical assistance to support drinking water and wastewater needs, including:
  - Funding applications
  - Project planning & administration
  - Engineering services
  - Environmental services
  - Legal assistance
  - Rate studies
  - Income survey
  - Capacity-building
  - Emergency response (*DW only*)
- Priority given to small, disadvantaged communities and in accordance with drinking water and wastewater funding priorities
- Availability based on program capacity and priorities



Photo: Del Rancho Y Emergency Funding for Interconnection



# DRINKING WATER FUNDING

## FUNDING FOR SCHOOLS

- Funding for child day care facilities, preschools, and K-12 schools,
- Eligible projects include: installation of point-of-use and point-of-entry treatment systems, fixture replacement, installation of drinking water fountains, and provision of interim drinking water supplies
- Administered via non-profit organizations

### PROGRAMS:

- Bottled Water for Schools Grant Program (BWFS)
- Drinking Water for Schools Grant Program (DWFS)



*Photos: Before and after  
Drinking Fountains at  
Rockford Elementary School*



# DRINKING WATER FUNDING

## DOMESTIC WATER WELLS & HOUSEHOLDS

- Program administered by counties and non-profit organizations
- Provides funds to individuals/households served by a domestic well or state small water system to address water quality issue

### PROGRAMS:

- Safe and Affordable Funding For Equity and Resilience (SAFER)

Photos: 1) Construction of a domestic well,  
2) Hauled water tank (Madera County), and  
3) Finished domestic well





# EMERGING CONTAMINANTS FUNDING PROGRAM

- Funds to reduce people's exposure to perfluoroalkyl and polyfluoroalkyl substances (PFAS) and other emerging contaminants (EC) through their drinking water

## FUNDING SOURCES

- Drinking Water State Revolving Fund (DWSRF) Emerging Contaminant Fund
- Emerging Contaminants in Small and Disadvantaged Communities Fund (EC-SDC)



Photo: PFAS Ion Exchange Plant for City of Anaheim



# WASTEWATER

- Funding for planning and construction projects to restore and maintain compliance with WDRs and NPDES permits
- Funding for planning and construction of eligible water recycling projects
- Grants and low-interest loans
- Grants available for projects benefitting small, disadvantaged communities
- Priority for septic-to-sewer projects

## PROGRAMS:

- Clean Water State Revolving Fund (CWSRF)
- Water Recycling Funding Program (WRFP)



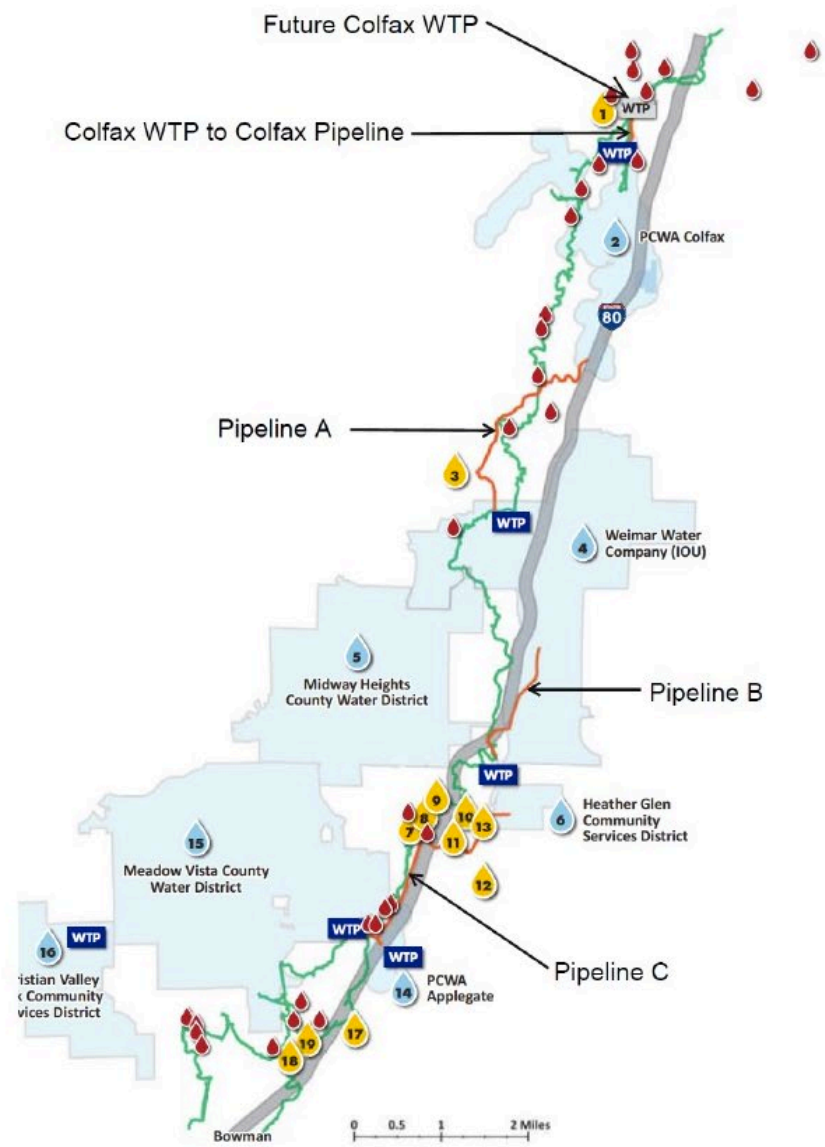
Photos: 1) Blow-off Value, Air Vac, Valve Cans,  
2) Low Pressure Pump Station, and 3) New Pipeline

The background of the slide features three thick, light gray wavy lines that sweep across the lower half of the frame from left to right, creating a sense of movement and depth.

# **QUESTIONS?**

# Case Study

## Placer County Water Agency Regionalization



### Colfax to Applegate Regionalization Study Area

#### Legend: Infrastructure

- Boardman Canal
- Interstate 80
- New Pipeline Connection
- WTP Water Treatment Plant (6)
- Future Colfax Water Treatment Plant (1)
- Larger Public Water Systems (7)
- Smaller Public Water Systems (12)
- Constructed Conveyance (31)

#### Legend: Water Systems

NO.	SYSTEM NAME	POPULATION	CONNECTIONS
1	Shady Glen Community Water System	200	120
2	Placer County Water Agency Colfax	2,987	917
3	North Eden Valley	52	21
4	Weimar Water Company (Investor-Owned Utility)	1,500	535
5	Midway Heights County Water District	1,080	406
6	Heather Glen Community Services District	250	100
7	Applegate Inn	-	1
8	Applegate Station	25	1
9	Live Oak Waldorf School	200	1
10	Sierra Reach Ministries	80	2
11	Applegate Motel Water System	35	3
12	Jesuit Retreat Center	-	1
13	Applegate Park	100	2
14	Placer County Water Agency Applegate	215	67
15	Meadow Vista County Water District	4,001	1,478
16	Christian Valley Park Community Services District	1,800	625
17	Clipper Gap Head Start	-	1
18	Lake Arthur Cabins	-	1
19	Oliver's Foothills Gas	-	1
TOTAL		12,525	4,283



# FUNDING OPTIONS PER THE INTENDED USE PLAN 2022-23

Project	Phase	DAC/ SDAC/ Connection	Planning Project Grant Limitations	Construction Project Grant Limitations
Heather Glen CSD	Planning	Small SDAC; 101	The maximum grant/PF for a community is based on all the funding the community receives in a 5-year period	\$60,000 per connection *101 = \$6,060,000
Shady Glen Estates	Construction	Small SDAC; 121	NA	\$60,000 per connection 121*60,000 = \$7,260,000
Weimar Investor Owned	Planning	Small, Non- DAC; 566	The Deputy Director of DFA may approve planning grants/ PF for small, non DAC Category A-C and/ or consolidation Projects for good cause to the extent authorized by the law	\$60,000 per connection 1,478*60,000 = \$88,680,000

# Upcoming Changes to the IUP

- Prioritization for Failing Systems and consolidations
- Per connections caps
- More direction around how to fund domestic well consolidation projects
- Timing- updated version available in August

# RESOURCES

## CFCC Handbook

## Division of Financial Assistance Webpage

[https://www.waterboards.ca.gov/water\\_issues/programs/grants\\_loans/](https://www.waterboards.ca.gov/water_issues/programs/grants_loans/)

## State Water Board's E-mail Subscription

[https://www.waterboards.ca.gov/resources/email\\_subscriptions/](https://www.waterboards.ca.gov/resources/email_subscriptions/)

## FAAST

- Web-based interface used by many State Water Board funding programs.
- Requires a FAAST account to apply for funding
- Web Address: <https://faast.waterboards.ca.gov/>
- Help Desk: [FAAST\\_Admin@waterboards.ca.gov](mailto:FAAST_Admin@waterboards.ca.gov) or 1-866-434-1083





The background of the slide features three thick, light gray wavy lines that sweep across the lower half of the frame from left to right, creating a sense of movement and depth.

# **QUESTIONS?**



For general inquiries, please call DFA at:

**916-327-9978**

**THANK YOU**

# Additional SWB Consolidation Resources

- [Countywide and Regional Funding Solicitation](#): Overview of available SAFER funding to support county-level projects that improve drinking water access and reliability for state smalls and domestic wells.
- [Water System Consolidation Guidance](#): Provides step-by-step guidance on physical consolidation of small water systems.
- [Water System Partnerships](#): Describes partnership models (e.g., managerial, physical, operational) that help small systems improve service through regional collaboration.
- [Aquifer Risk Map](#): Interactive map identifying areas where domestic wells may be at higher risk of going dry, based on groundwater level trends and well characteristics.
- [Drinking Water System Outreach Tool](#): GIS-based tool to help identify public water systems and key contacts for outreach and planning efforts.

## **Past Gathering Discussions on Consolidation:**

- [September 2024](#): Placer County Water Agency, El Dorado County, and South Tahoe PUD shared lessons learned from their consolidation efforts – covering feasibility, funding, and community engagement.
- [February 2025](#): Santa Cruz County presented their recent feasibility study on water system consolidation.



# State Small Water System

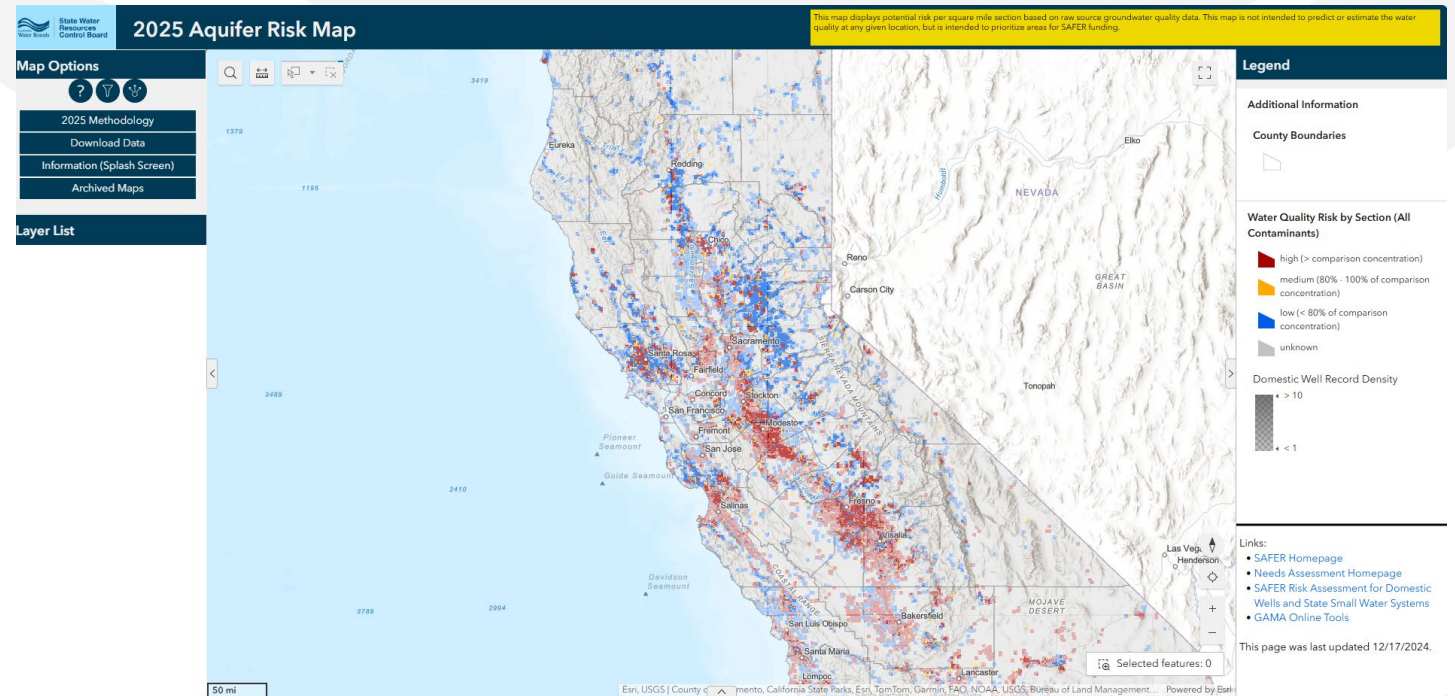
2025 Inventory Update



Samantha Mak, Division of Drinking Water

# Request for State Small Water System Inventory Update

- 823 State Small Water Systems currently in inventory
- Last updated in 2021 per CHSC Section 116772 – High Risk Map Requirement

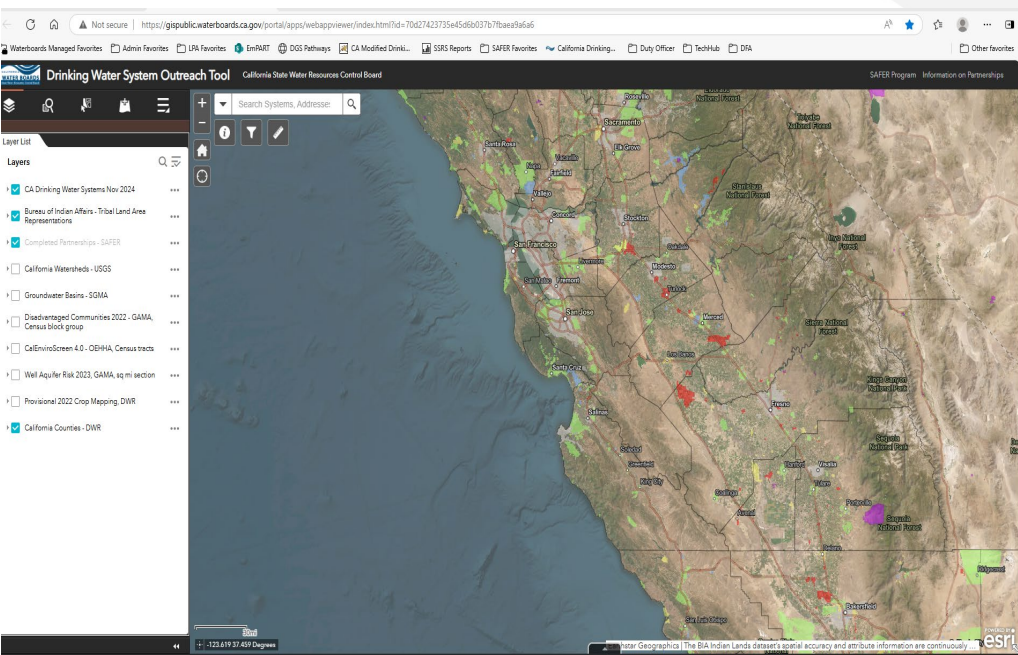


[Aquifer Risk Map](#)



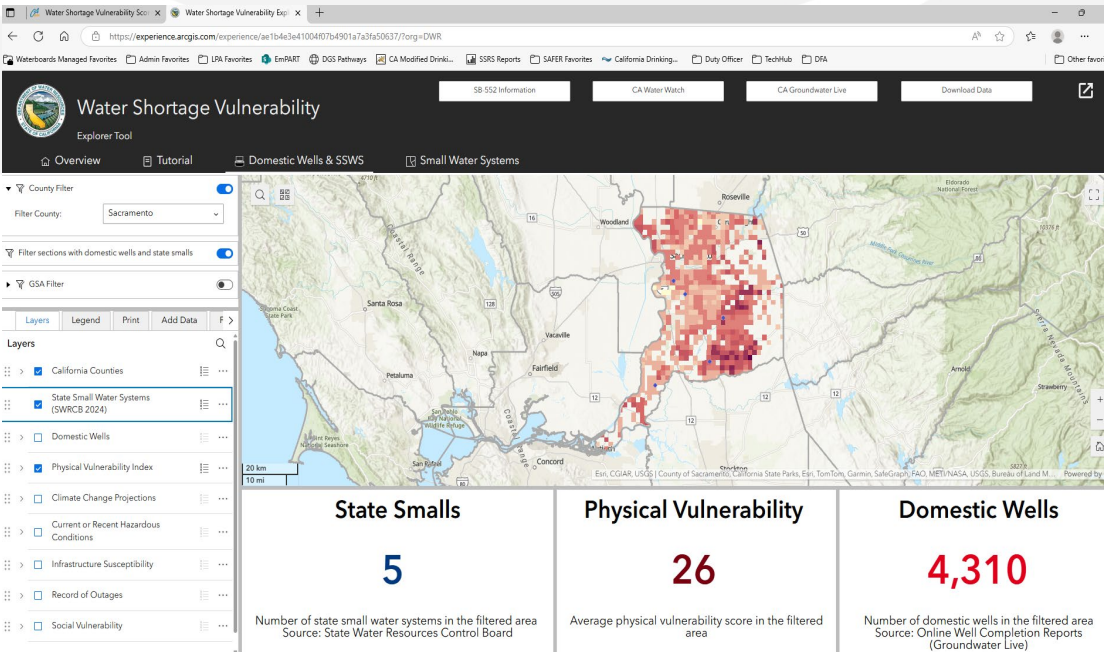
# More Uses

## Consolidation Outreach Maps



[Drinking Water System Outreach Tool](#)

## Water Shortage Vulnerability Map



[Water Shortage Vulnerability Explorer Tool](#)



# Phase I Outreach

Estimated June-July 2025



STATE OF CALIFORNIA  
STATE WATER RESOURCES CONTROL BOARD  
DIVISION OF DRINKING WATER  
COUNTY ENGAGEMENT UNIT  
(619) 525-4772  
1001 I STREET, 17TH FLOOR  
SACRAMENTO, CALIFORNIA 95814  
[ddw-countyengagement@waterboards.ca.gov](mailto:ddw-countyengagement@waterboards.ca.gov)



LOCAL PRIMACY AGENCY COUNTIES



LAST UPDATED JANUARY 24, 2025

- Merced
- San Benito
- Santa Clara
- Sutter
- Imperial
- Contra Costa
- San Luis Obispo
- Riverside
- Santa Barbara
- Santa Cruz
- Napa
- San Bernardino
- Alpine
- Sacramento
- Calaveras
- San Joaquin
- El Dorado
- Shasta,
- Mono

**Phase II Outreach  
Estimated August -September 2025**

- Placer
- Los Angeles
- Amador
- Alameda
- Colusa
- Del Norte
- Fresno
- Glenn
- Humboldt
- Plumas
- Kings
- Madera
- Stanislaus
- Butte
- Tehama
- Yolo
- Nevada
- Yuba
- Monterey

**Phase III Outreach  
Estimated October-November 2025**

- San Francisco
- San Mateo
- Sierra
- Siskiyou
- Solano
- Sonoma
- Trinity
- Tulare
- Tuolumne
- Ventura
- Inyo
- Kern
- Lake
- Lassen
- Marin
- Mariposa
- Mendocino
- Modoc
- Orange
- Plumas
- San Diego

# For More Information

Please email Samantha Mak if you have any questions regarding the state small water system inventory update, updates to County contact information, or would like to discuss County drought needs.

Contact Information:

Samantha Mak, SB 552 County Engagement

[Samantha.Mak@waterboards.ca.gov](mailto:Samantha.Mak@waterboards.ca.gov)

County Engagement Unit

[DDW-CountyEngagement@waterboards.ca.gov](mailto:DDW-CountyEngagement@waterboards.ca.gov)





# WSVE Tool Feedback Solicitation

- Planned Water Shortage Vulnerability Explorer Tool in late 2025
- **County Office Hours: June 25, 2025**
  - Registration for the office hours will include a survey (with optional questions) on Water Shortage Vulnerability Score and Tool use
  - Additional meetings will be set for other interested parties (i.e. NGOs, Academics, Public)
- Intent is to address data gaps, clarification on methodology, etc.
- Will collect feedback until mid-July

If you are unable to attend, you can send feedback to Sarah Ko at [CountyDRP@water.ca.gov](mailto:CountyDRP@water.ca.gov)



# Closing – Thank you!

Next steps – we will follow up with an email to counties for future gatherings, ppt, invitation to share in upcoming gathering.