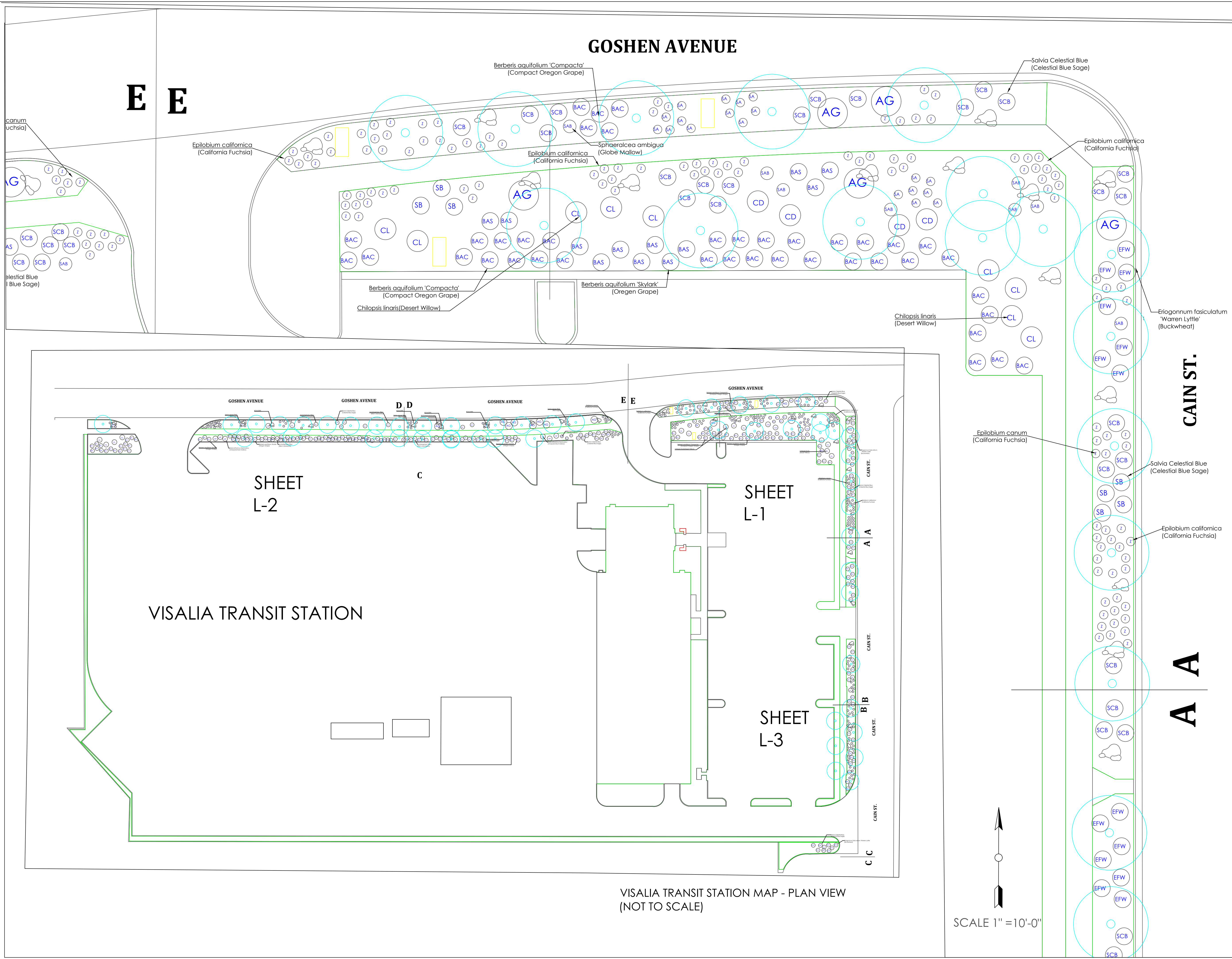


USER REVDATE FINAME



**VISALIA TRANSIT STATION
535 N. CAIN ST
VISALIA, CA
PLANTING PLAN / CORNER CAIN
AND GOSHEN**

No.	Revision/Issue	Date
	OPEN DOCUMENT	3/2017

DESIGNED BY:
The Habitat Corridor
Project
PROJECT CONTACT:
APRIL OWENS
707.331.2070

Project TRANSIT	Sheet
Date FEBRUARY 2017	L-1
Scale 1"=10'-0"	

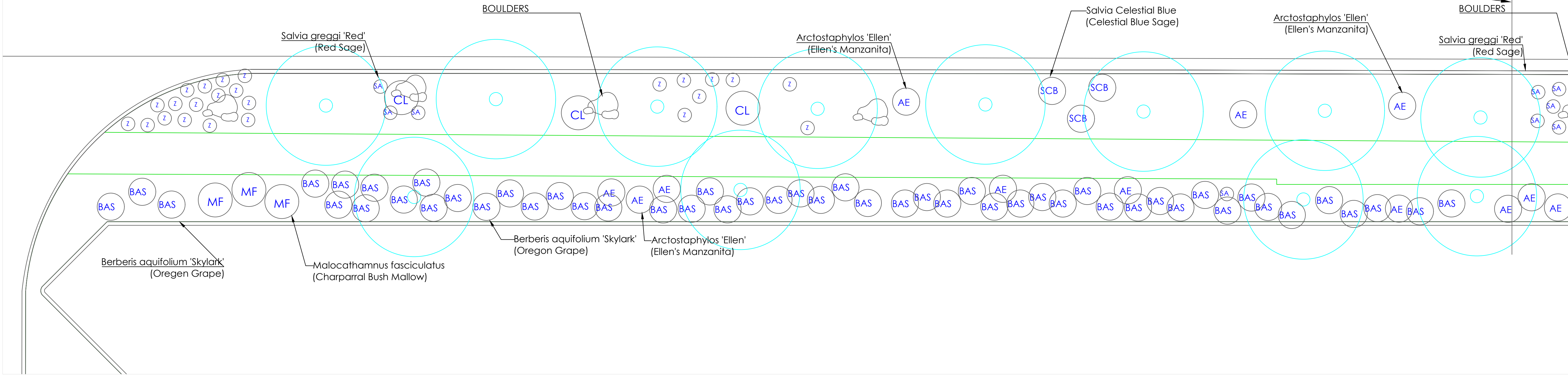
GOSHEN AVENUE

GOSHEN AVENUE

D D

MATCHLINE

BOULDERS

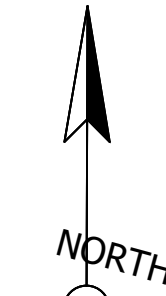
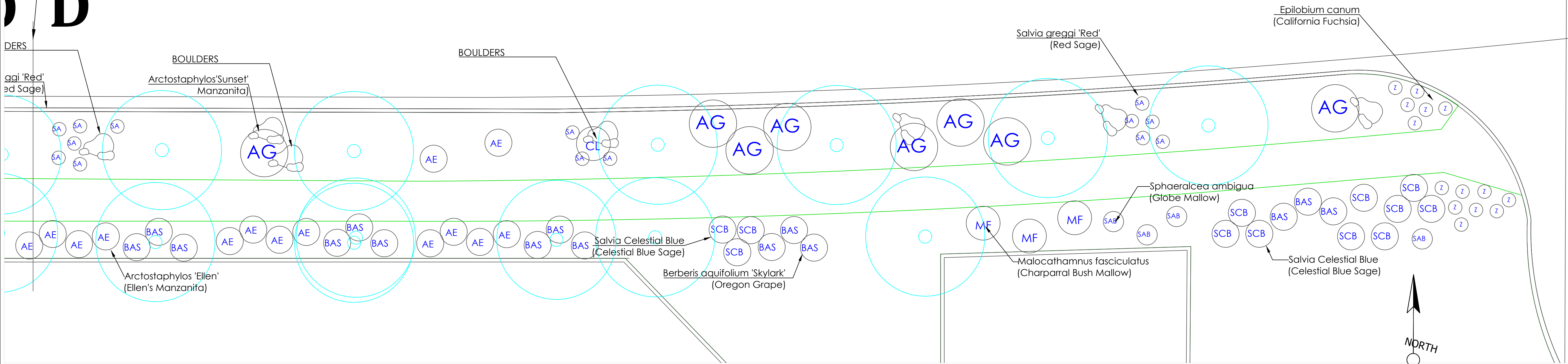


MATCHLINE

GOSHEN AVENUE

MATCHLINE

E



SCALE 1" = 10'-0"



VISALIA TRANSIT STATION
535 N. CAIN ST
VISALIA, CA
PLANTING PLAN

No.	Revision/Issue	Date

DESIGNED BY:
The Habitat Corridor
Project
PROJECT CONTACT:
APRIL OWENS
707.331.2070

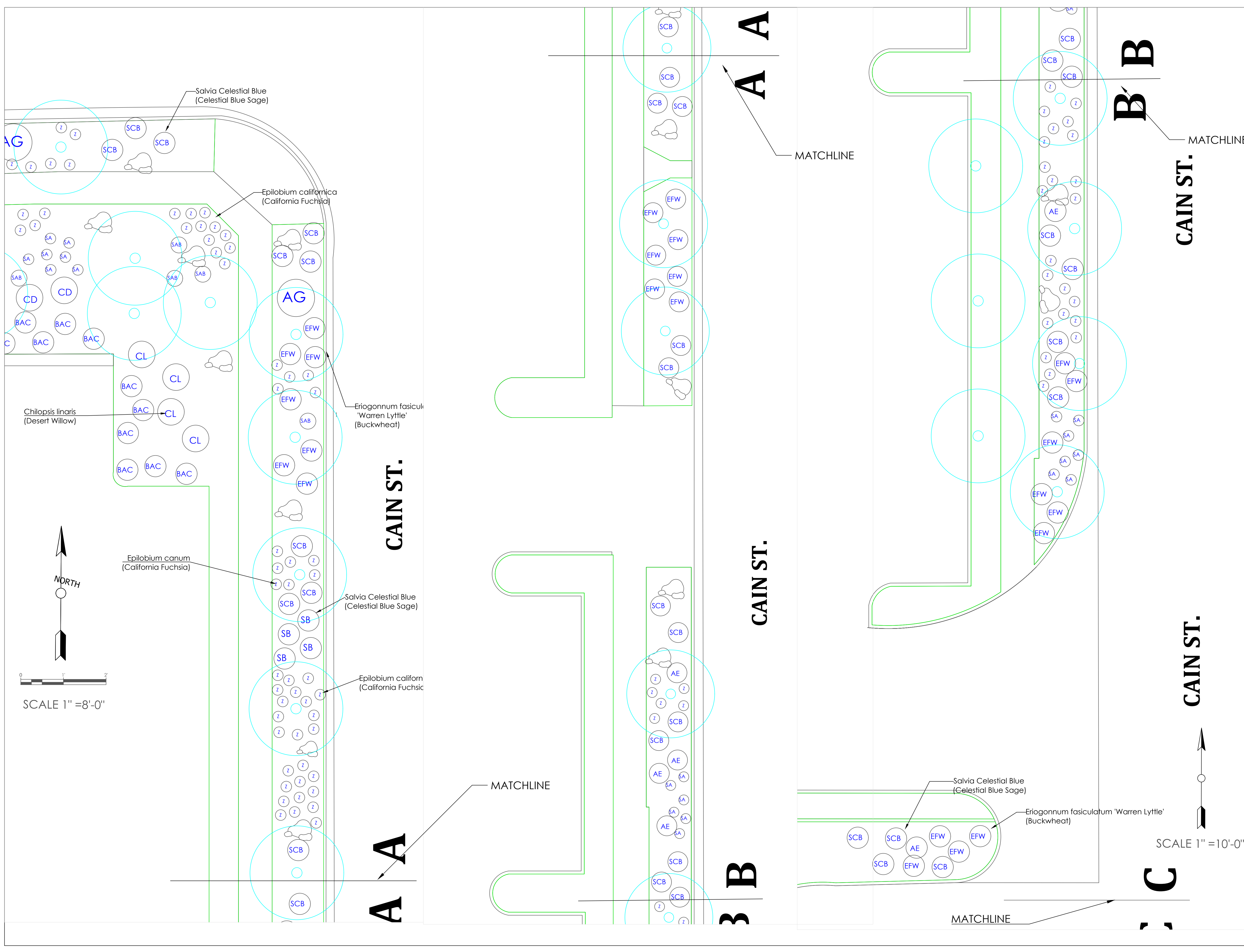
Project TRANSIT	Sheet
Date FEBRUARY 2017	L-2
Scale 1"=20'-0"	

FINAME

REVDATE

USER

USER REVDATE LNAME



**VISALIA TRANSIT STATION
535 N. CAIN ST
VISALIA, CA
PLANTING PLAN**

No.	Revision/Issue	Date

DESIGNED BY:
The Habitat Corridor
Project
PROJECT CONTACT:
APRIL OWENS
707.331.2070

Project TRANSIT	Sheet
Date FEBRUARY 2017	L-3
Scale 1"=10'-0"	

Project TRANSIT
Date FEBRUARY 2017
Scale 1"=10'-0"

LEGEND

SYMBOL	BOTANICAL NAME	COMMON NAME	SIZE	QUANTITY*	SOURCES
AG	ARCTOSTAPHYLOS SUNSET	SUNSET MANZANITA	1 GAL	-	ANTELOPE VALLEY RESERVE CONSERVATION NURSERY 10148 WEST AVE 1 LANCASTER, CA 93536 PHONE: 661.742.7306 EMAIL: AVRC@CDMARCDC.ORG
AE	ARCTOSTAPHYLOS ELLEN	ELLEN'S MANZANITA	1 GAL		
BAC	BERBERIS REPENS	CALIFORNIA BARBERRY	1 GAL		
BAS	BERBERIS SKYLARK	CALIFORNIA BARBERRY	1 GAL		
CD	CELANOTHUS DARK STAR	CALIFORNIA LILAC 'DARK STAR'	1 GAL		CENTRAL COAST WILDS 336A GOLF CLUB DRIVE SANTA CRUZ, CA 95060 PHONE: 831.459.0655 EMAIL: INFO@CENTRALCOASTWILDS.COM
CL	CHLOPS LINEARS	DESERT WILLOW	1 GAL		
EPW	ERIOGONUM WARREN LITTLE	CALIFORNIA BUCKWHEAT	1 GAL		EL NATIVO GROWERS, INC. 200 S. PECKHAM ROAD AZUSA, CA 91702 PHONE: 626.998.8449 EMAIL: SALES@ELNATIVOGROWERS.COM
Z	EPILOBUM CANUM	CALIFORNIA FUCHSIA	1 GAL		
FCK	FREMONTODENDRON KENT TAYLOR	GROUND COVER FLANNEL BUSH	1 GAL		
MF	MALCOLTHAMNUS FASCICULATUS	CHARPARRAL MALLOW	1 GAL		ELKHORN NATIVE PLANT NURSERY 15378 HIGHWAY 1 MOSS LANDING, CA 95039 PHONE: 831.763.1207 WEB SITE CONTACT: WWW.ELKHORNURSERY.COM/CONTACTORDERING
SA	SALVIA GREGGI RED	AUTUMN SAGE	1 GAL		
SCB	SALVIA 'CELESTIAL BLUE'	PURPLE SAGE	1 GAL		LAS PILATAS NURSERY 3232 LAS PILATAS RD SANTA MARGARITA, CA 93453 PHONE: 805.459.5992 EMAIL: PENNY@LASPILATAS.COM
SAB	SPHAERALEA AMBIGUA	GLOBE MALLOW	1 GAL		
					MANZANITA NURSERY 880 CHALK HILL ROAD SOLVANG, CA 93463 PHONE: 805.688.9692 EMAIL: MANZANITANURSERY@EARTHINK.NET
					MATILJA NURSERY 8225 WATERS ROAD MODOC PARK, CA 93021 PHONE: 805.523.8604 WEB SITE CONTACT: WWW.MATILJANURSERY.COM/CONTACT-US
					MOCKING BIRD NURSERY 1670 JACKSON ST RIVERSIDE, CA 92504 PHONE: 951.780.3571 EMAIL: INFO@MOCKINGBIRDNURSERY.COM
					SANA CREEK WHOLESALE NURSERY 35351 EAST CARMEL VALLEY ROAD CARMEL VALLEY, CA 93924 PHONE: 831.459.2830 EMAIL: NURSERY@SANACREEKNURSERY.COM
					SANTA BARBARA NATIVES 14900 CALLE REAL SAN JOSE, CA 95137 PHONE: 805.498.4994 EMAIL: JEFF@SBNATIVES.COM
					THEODORE PAYNE FOUNDATION FERN WILD FLOWERS AND NATIVE PLANTS 10459 TUXFORD ST SUN VALLEY, CA 91352 PHONE: 818.768.1802 WEB SITE CONTACT: THEODOREPAYNE.ORG/CONTACT

*QUANTITY TO BE CALCULATED AT FINAL CONSTRUCTION DOCUMENT SET - NOT ALL PLANTS ON LIST TO BE INCLUDED IN PROJECT

ESTIMATED AREAS:

WEST GOSHEN ST SECTION 6800 SQ FT
 EAST GOSHEN ST SECTION 6600 SQ FT
 NORTH CAIN ST SECTION 1900 SQ FT
 SOUTH CAIN ST SECTION 1300 SQ FT
 MOST SOUTHERN OF CAIN ST SECTION 850 SQ FT
 TOTAL SQ FT OF PLANTING AREAS 17,450 SQ FT

ESTIMATED WATER SAVINGS:

PER DWR CALCULATION

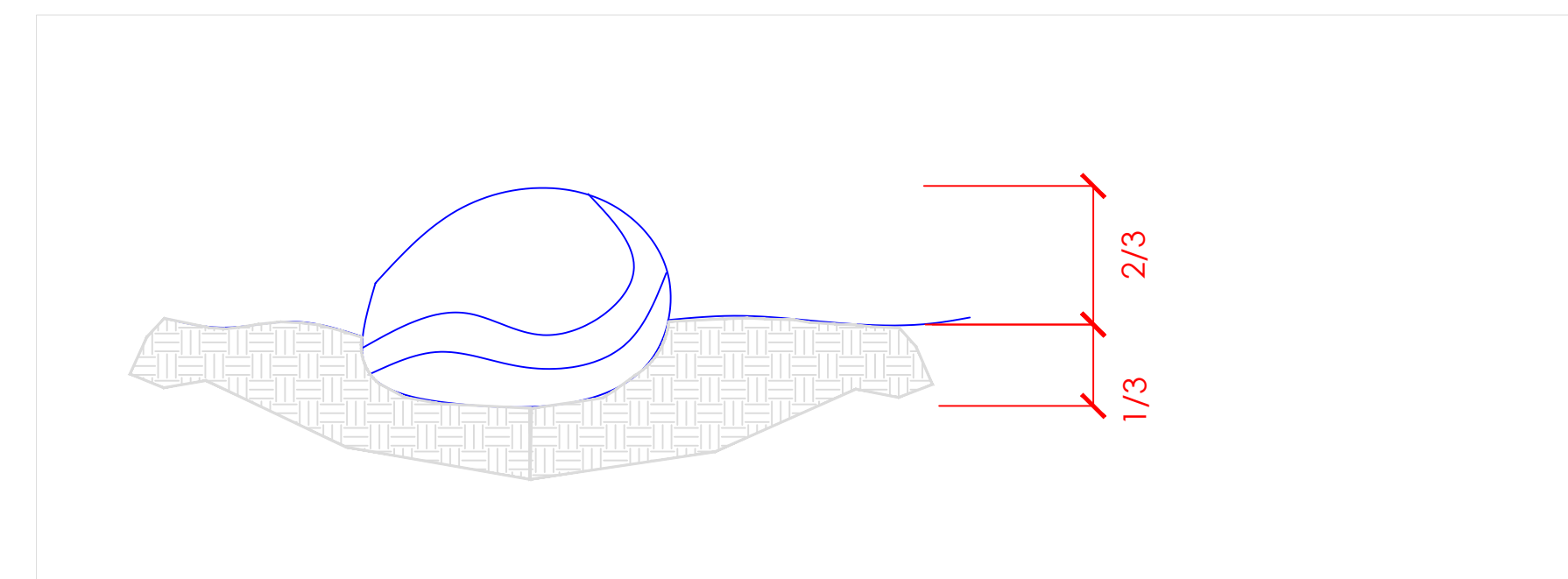
SITE NOTES

SITE PREPARATION- CLEAR EXISTING PLANT MATERIALS, FLAG EXISTING IRRIGATION HEADS. PROTECT ANY EXISTING TREES FOR PROJECT INSTALLATION.

- IRRIGATION - ALL EXISTING HEADS TO BE CONVERTED TO HUNTER MP 1000 SERIES HEADS. IRRIGATION SCHEDULE TO BE ADJUSTED PER SEASON AS RECOMMENDED BY THE HABITAT CORRIDOR PROJECT.
- PLANTING - PLANTS TO BE LAID OUT PER PLAN AND ADJUSTED BY HABITAT CORRIDOR PROJECT IF NECESSARY. PLEASE GIVE ONE WEEK NOTICE FOR PLANT INSTALLATION.
- PLANTING- ALL PLANTS ON LIST AVAILABLE AT SOURCE NOTED ON LEGEND.
- PLANTING- CONTACT HABITAT CORRIDOR PROJECT FOR ANY PLANT SUBSTITUTION OR HELP WITH PROCURING PLANT MATERIALS.
- AFTER INSTALLATION, ROCK MULCH ENTIRE SITE. SEE MATERIALS LIST FOR TYPE.

MATERIALS

-ROCK MULCH: 1-2" DEEP $\frac{3}{8}$ " CRUSHED ROCK
 -FIELDSTONE BOULDERS: 2FT-3FT, TO BE SELECTED FROM LOCAL MATERIALS YARD
 -IRRIGATION : ADD DEDICATED WATER METER; SWITCH OUT ALL IRRIGATION INSERTS TO SPECIFIED HUNTER MP 1000 ROTATORS - NEED COUNT OF POP UP HEADS- REPLACE BROKEN HEADS AS NEEDED.



BOULDER SETTING DETAIL - SET BOULDER $\frac{1}{3}$ IN GROUND



VISALIA TRANSIT STATION
 535 N. CAIN ST
 VISALIA, CA
 PLANT LIST AND DETAILS

No.	Revision/Issue	Date

DESIGNED BY:
 The Habitat Corridor Project
 PROJECT CONTACT:
 APRIL OWENS
 707.331.2070

Project TRANSIT	Sheet
Date FEBRUARY 2017	L-4
Scale 1"=20'-0"	