

Appendix 2A

**Attachment 3: South Delta Temporary Barriers
Project Annual Construction and Operation
Flow Chart for Calendar Years 2023–2027**

**Attachment 3a: South Delta Temporary Barriers
Project Annual Construction and Operation
Flow Chart for Calendar Years 2023–2027**

This attachment has been deleted in its entirety from the Draft Environmental Impact Report.
Attachment 3b replaces this attachment in its entirety in the Final Environmental Impact Report.

**South Delta Temporary Barriers Project
Annual Construction and Operation
Flow Chart for CY 2023 - 2027**

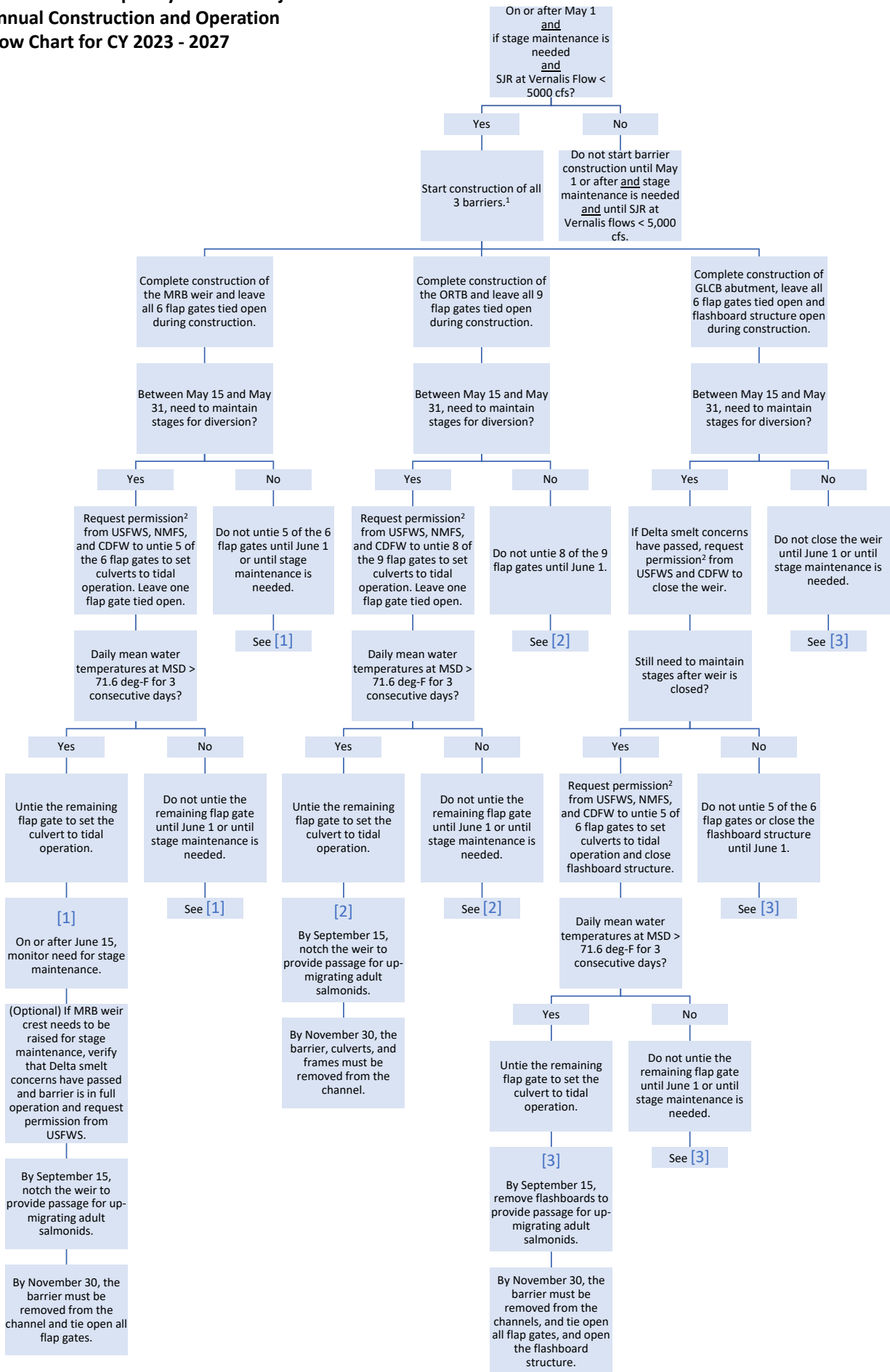


- Notes:
 1 During extremely wet years, not all barriers may be installed.
 2 Request must demonstrate need for stage maintenance through observed and forecast stage data

Attachment 3b: South Delta Temporary Barriers Project Annual Construction and Operation Flow Chart for Calendar Years 2023–2027

This attachment is entirely new for the Final Environmental Impact Report (FEIR) and was not included as part of the Draft Environmental Impact Report. This attachment replaces Attachment 3a in its entirety in the FEIR.

**South Delta Temporary Barriers Project
Annual Construction and Operation
Flow Chart for CY 2023 - 2027**



Notes:
 1 During extremely wet years, not all barriers may be installed.
 2 Request must demonstrate need for stage maintenance through observed and forecast stage data