



# STATEWIDE LAND USE DATA COLLECTION AND REPORTING

DWR developed the [California Land Use Viewer](#) as part of DWR's ongoing commitment to provide technical assistance to Groundwater Sustainability Agencies (GSAs) and other water managers throughout the state. The Land Use Viewer allows GSAs and the public to easily access both statewide and existing county land use datasets collected over the last 30 years. This project enhances and continues the collection and reporting of statewide land use data on an annual basis.

## What is Proposition 68?

The California Drought, Water, Parks, Climate, Coastal Protection and Outdoor for all Fund (Senate Bill 5, Proposition 68) authorized \$4 billion in general obligation bonds for state and local parks, environmental protection and restoration projects, water infrastructure projects, and flood protection projects. The Statewide Land Use Data Collection and Reporting project utilizes \$10 million on data, tools, and analysis efforts for drought and groundwater investments to achieve regional sustainability in support of the Sustainable Groundwater Management Act (SGMA) over a period of five years.

## How Does This Project Support SGMA?

This project provides GSAs, related stakeholders, and the public with regional and statewide data, tools, and analysis aligned to the technical requirements of the groundwater sustainability plan (GSP) regulations and SGMA. The resulting information provides standardized statewide data and reporting.

This project builds on the knowledge and successful track record of DWR's Regional and Statewide Integrated Water Management technical assistance programs and aligns with the Governor's Water Resilience Portfolio (Executive Order N-10-19) and the Open and Transparent Data Act (AB 1755). The information and knowledge gained through this project can assist local water agencies to successfully develop and implement GSPs.

## What is the Value of this Information?

DWR began surveying land use in the early 1950s for specific projects and by the mid-1960s began an ongoing program to perform yearly land use surveys. These surveys collected urban, agricultural, and environmental land use and water use data that served as the basis for estimating current and projected water uses on a statewide and regional scale. Since 1950, DWR has conducted over 250 land use surveys of all or parts of California's 58 counties. This project enhances the existing DWR land use and SGMP activities that resulted in collection and reporting of 2014 statewide land use data. Proposition 68 funding allows annual data collection and reporting of statewide land use and extends this effort for a longer period of time. This new land use data provides multiple benefits to programs within a variety of local, state, and federal agencies.

## What is New in 2019?

- Publish water year 2016 land use data.
- Initiated contract development with USGS for water year 2017 land use.
- Multi-season ground-truthing for water year 2019 land use data completed.

## What are the Next Steps?

In early 2020, DWR plans to execute a contract with USGS for the development of water year 2017 land use data. In mid-2020, multi-season land use data for water year 2018 will be developed and delivered to

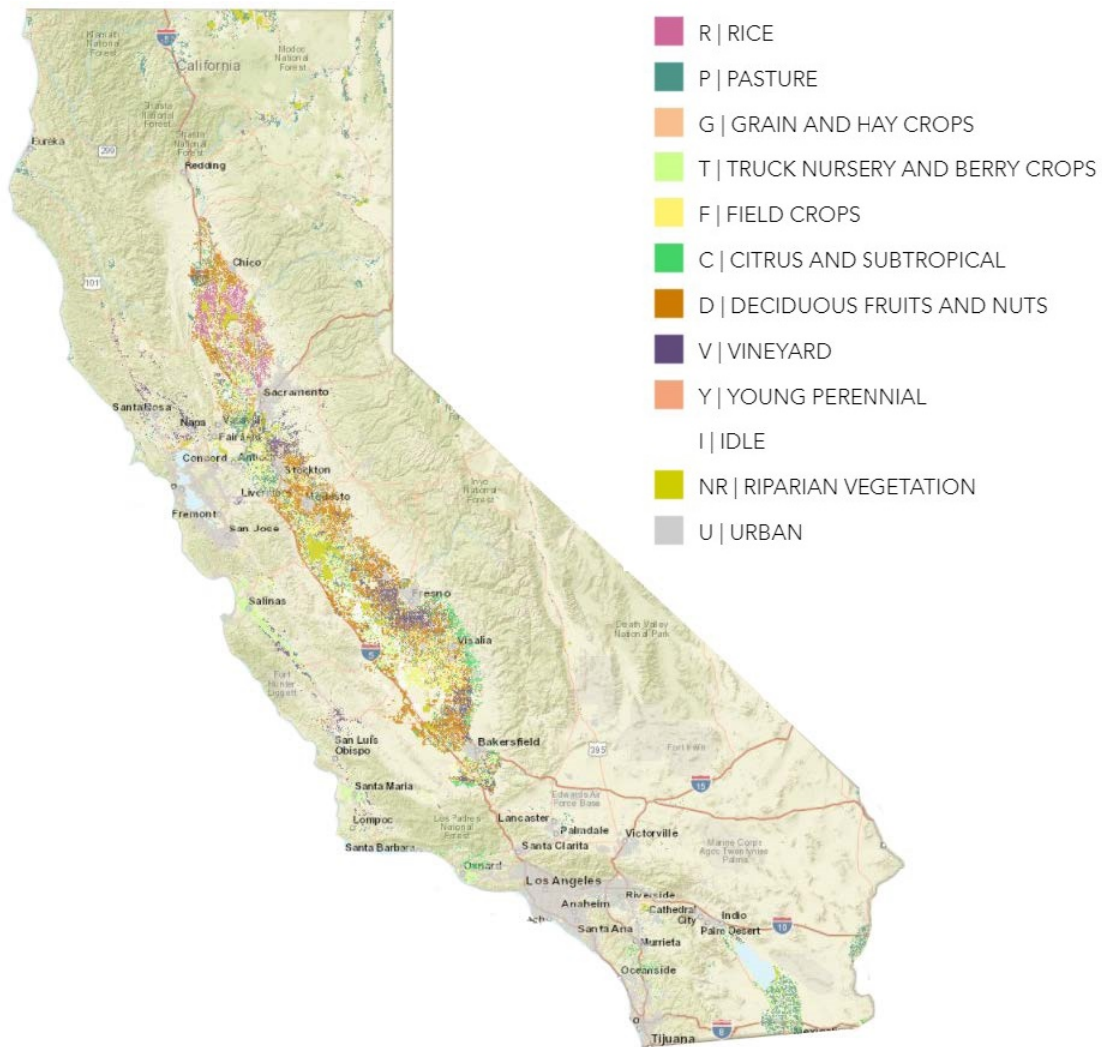
DWR for review by the Division of Regional Assistance prior to release to the public. Additionally, by late 2020 initial, multi-season land use data for water year 2019 will be delivered to DWR by the contractor.

### Land Use and Water Use Connection.

Land use data collected throughout the State can be used to develop water use estimates for statewide and

regional planning efforts, including water use projections, water use efficiency evaluation, groundwater model development, and water transfers. With the passage of SGMA, DWR will use the existing county and newly developed statewide land use information to review GSPs and enhance DWR's groundwater models that GSAs can use for GSP development.

## 2014 LAND USE DATA ON DWR LAND USE VIEWER



### Contact and Additional Information

For more information or questions, contact Muffet Wilkerson at [Muffet.Wilkerson@water.ca.gov](mailto:Muffet.Wilkerson@water.ca.gov)

### DWR Land Use Viewer

<https://gis.water.ca.gov/app/CADWRLandUseViewer>  
DWR SGMA Data and Tools Webpage  
[www.water.ca.gov/Programs/Groundwater-Management/Data-and-Tools](http://www.water.ca.gov/Programs/Groundwater-Management/Data-and-Tools)