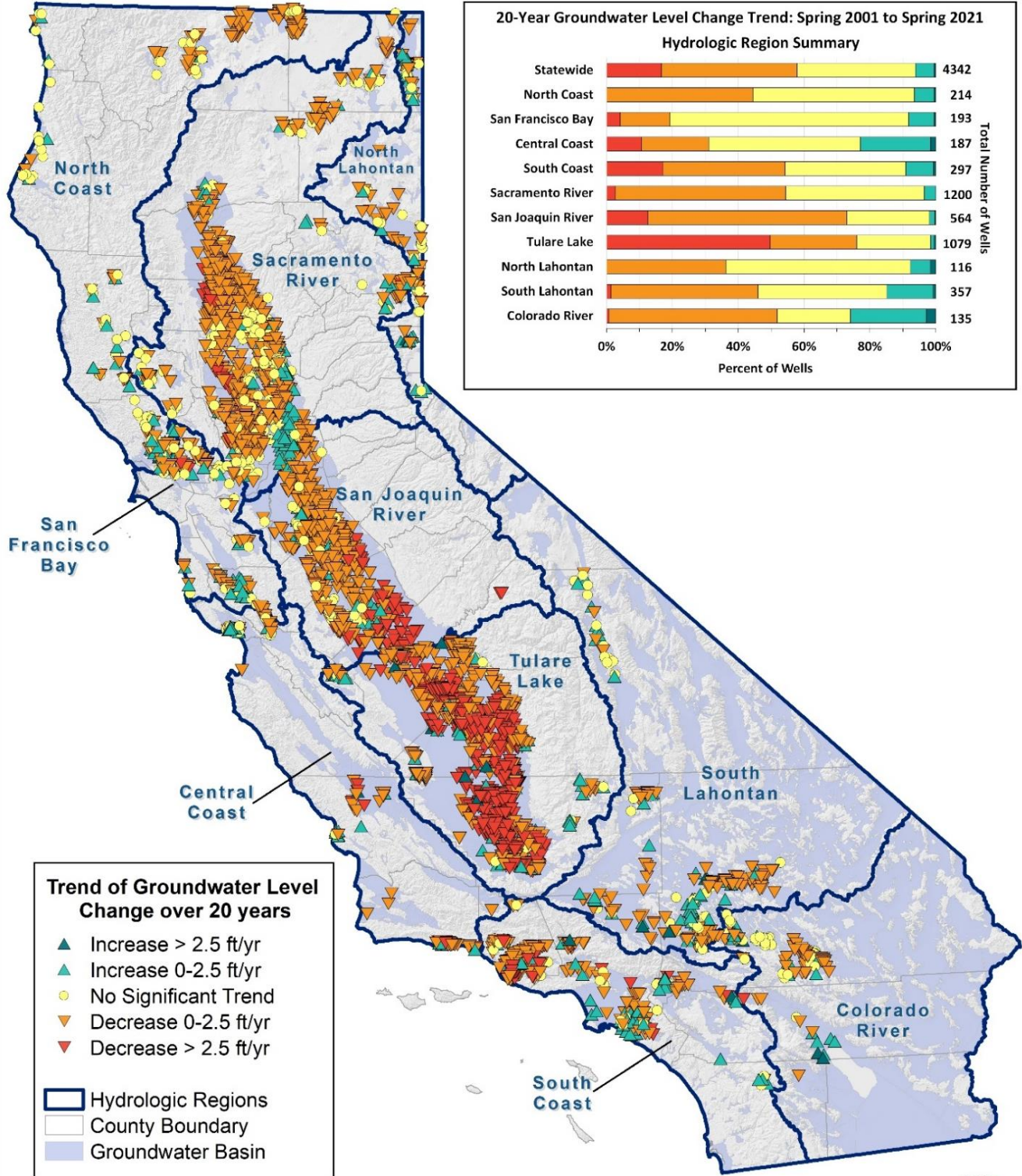


# Twenty-Year Groundwater Level Trend Spring 2001 to Spring 2021



Groundwater level trend map for 20-year period between springs 2001 and 2021. Groundwater level trend determined from water level measurements in wells. Map and chart based on available data from the DWR Enterprise Water Management Database as of 08/02/2021. Map Updated:08/25/2021.

