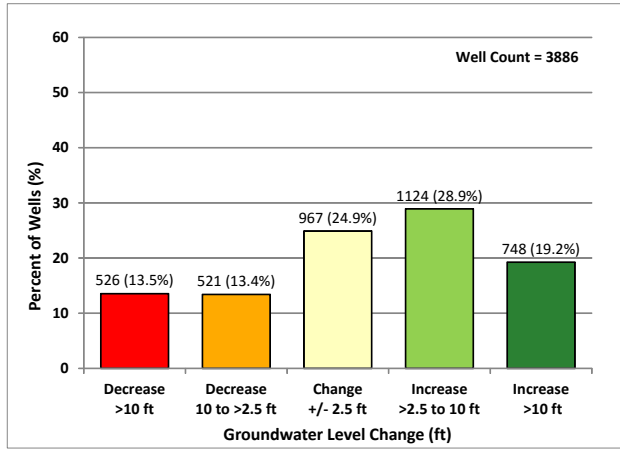
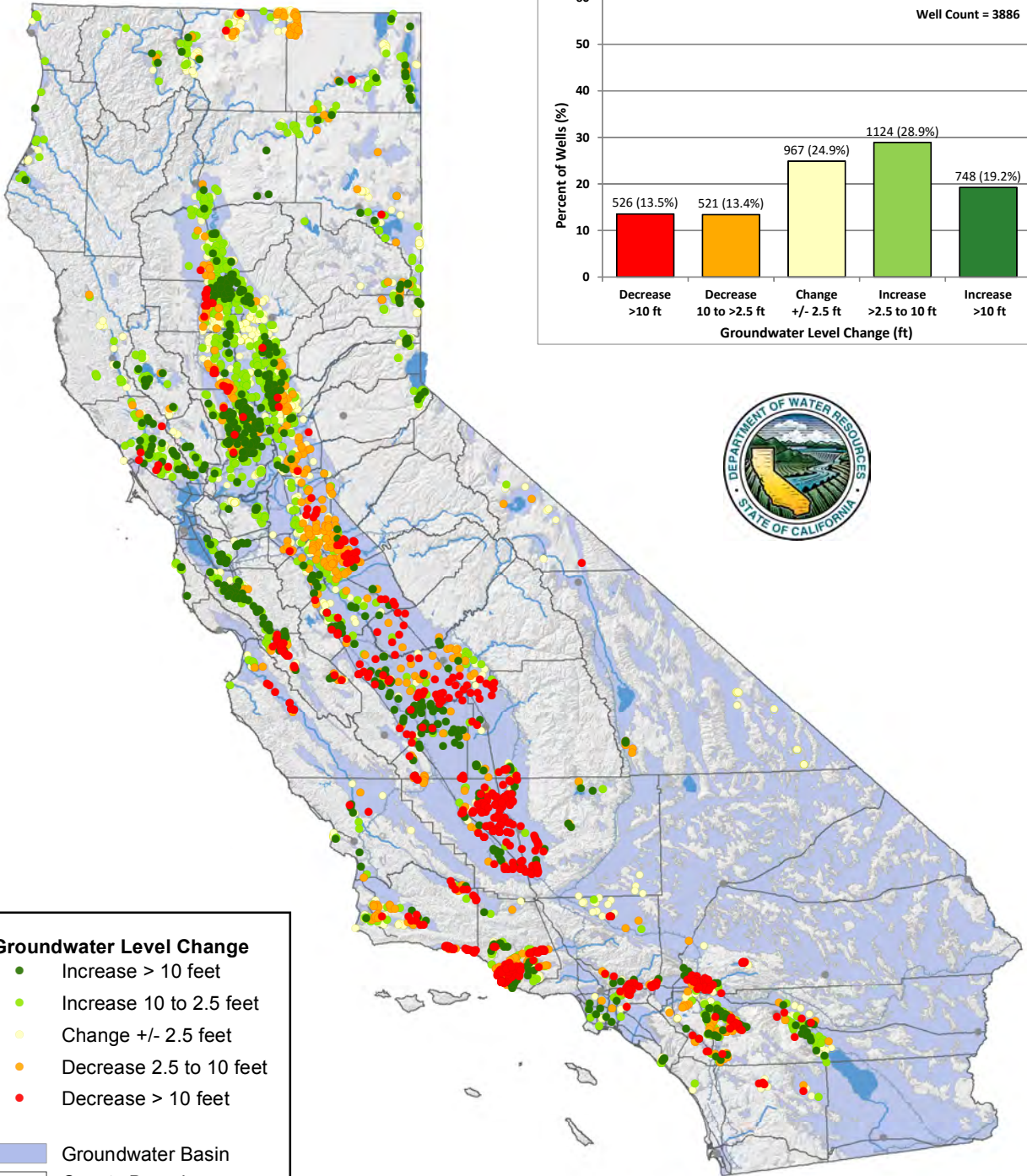


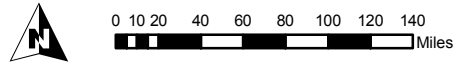
Groundwater Level Change* - Spring 2014 to Spring 2017



Groundwater Level Change

- Increase > 10 feet
- Increase 10 to 2.5 feet
- Change +/- 2.5 feet
- Decrease 2.5 to 10 feet
- Decrease > 10 feet

- Groundwater Basin
- County Boundary
- Major Highway
- Major Canal



*Groundwater level change determined from water level measurements in wells. Map and chart based on available data from the DWR Water Data Library as of 06/05/2017. Document Name: DOTMAP_S1714 Updated: 6/8/2017
Data subject to change without notice.