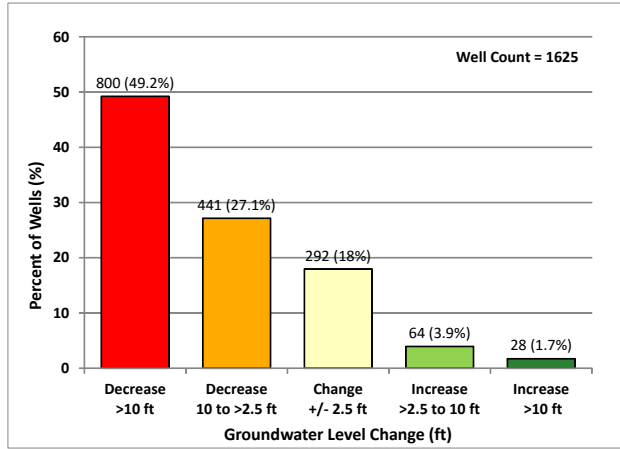
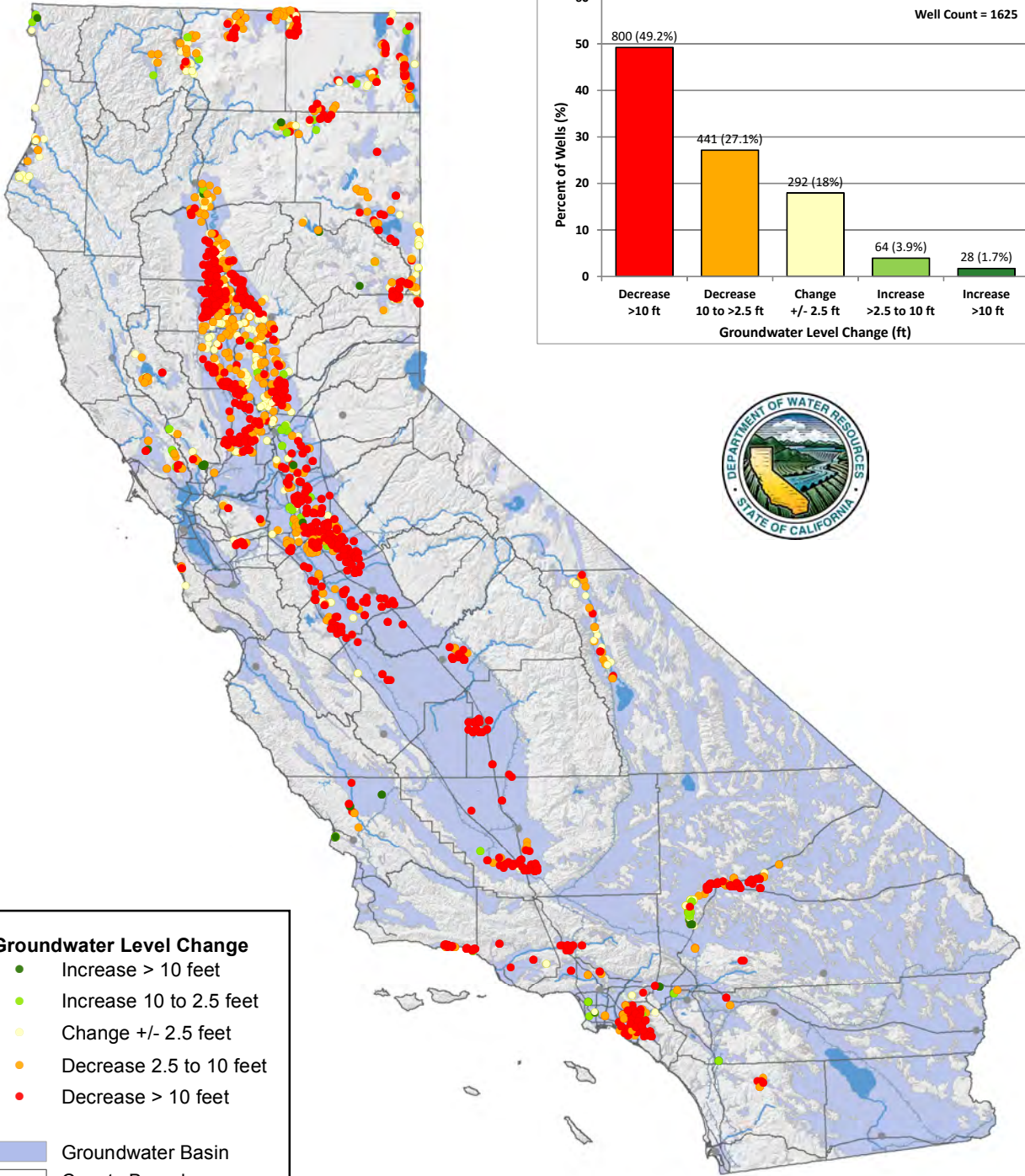


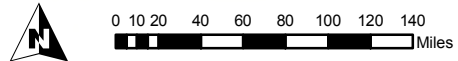
Groundwater Level Change* - Fall 2006 to Fall 2016



Groundwater Level Change

- Increase > 10 feet
- Increase 10 to 2.5 feet
- Change +/- 2.5 feet
- Decrease 2.5 to 10 feet
- Decrease > 10 feet

- Groundwater Basin
- County Boundary
- Major Highway
- Major Canal



*Groundwater level change determined from water level measurements in wells. Map and chart based on available data from the DWR Water Data Library as of 2/17/2017. Document Name: DOTMAP_F2016-F2006.mxd. Updated: 5/8/2017. Data subject to change without notice.