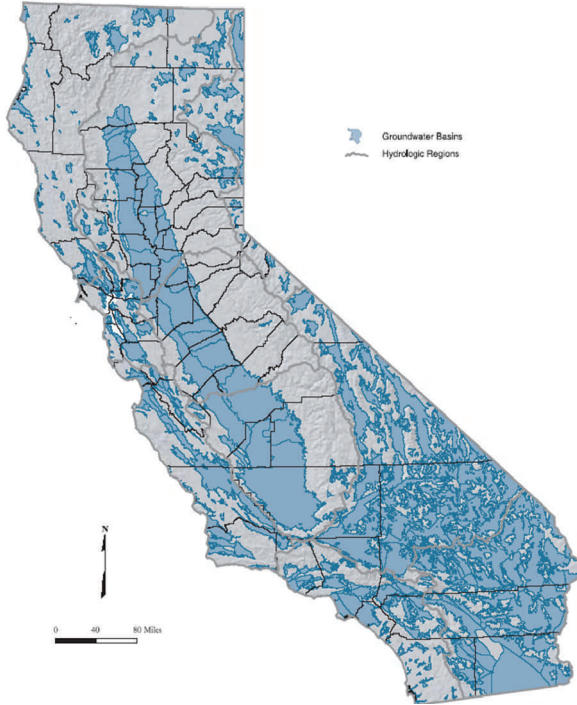


## California's Groundwater Basins



## How Will the Groundwater Elevation Data Be Used?

The data will be compiled in a statewide database that is available to the public. Local, state, federal, and all interested parties can use the data to evaluate and monitor groundwater conditions in California's groundwater basins and subbasins. The goal of CASGEM is to determine seasonal and long-term trends in groundwater levels within the basins.

## Contact Us About CASGEM

### Headquarters Office

Mary Scruggs  
901 P Street, Sacramento, CA 95814  
(916) 654-1324, mscruggs@water.ca.gov

### Northern Region Office

Kelly Staton  
2440 Main Street  
Red Bluff, CA 96080  
(530) 529-7344  
staton@water.ca.gov

### North Central Region Office

Chris Bonds  
3500 Industrial Blvd.  
West Sacramento, CA  
95691  
(916) 376-9657  
cbonds@water.ca.gov

### South Central Region Office

Dane Mathis  
3374 E. Shields Ave.  
Fresno, CA 93726  
(559) 230-3354  
dmathis@water.ca.gov

### Southern Region Office

Tim Ross  
770 Fairmont Avenue,  
Suite 102  
Glendale, CA 91203  
(818) 500-1645 x278  
tross@water.ca.gov

## Timeline

Preparing to Implement CASGEM:

**Summer 2010.** Public Workshops

**Fall 2010.**

- Develop, solicit public comments, and finalize program guidelines
- Develop online monitoring entity notification and data submittal system
- Local agencies work together to identify prospective monitoring entity for their basin/subbasin

**Late Fall 2010.**

- Online system ready for submission of monitoring entity notifications
- Prospective monitoring entities submit notifications to DWR

**January 1, 2011.** Notifications due to DWR

**Spring and Summer 2011.** Designated monitoring entities submit monitoring network plan to DWR

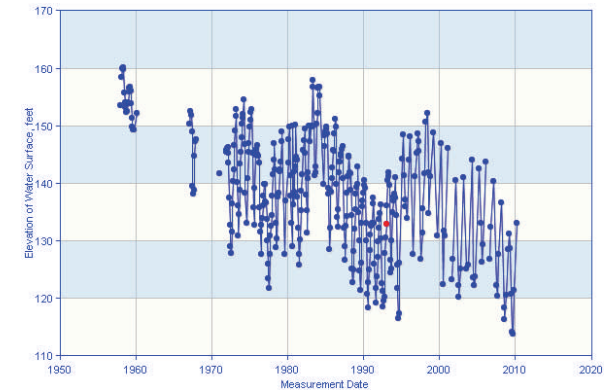
**January 1, 2012.**

- Monitoring entities begin submitting groundwater level data
- DWR submits first CASGEM status report to Governor and Legislature

## California Statewide Groundwater Elevation Monitoring Program

### CASGEM Program

# What Is CASGEM?



*On or before January 1, 2012, local groundwater Monitoring Entities will regularly and systematically monitor groundwater elevations in California's alluvial basins and subbasins in order to determine seasonal and long-term trends, and this information will be made readily and widely available to the public*



Department of Water Resources (DWR)  
California Natural Resources Agency  
State of California

## What Is CASGEM?

### What Is the CASGEM Program?

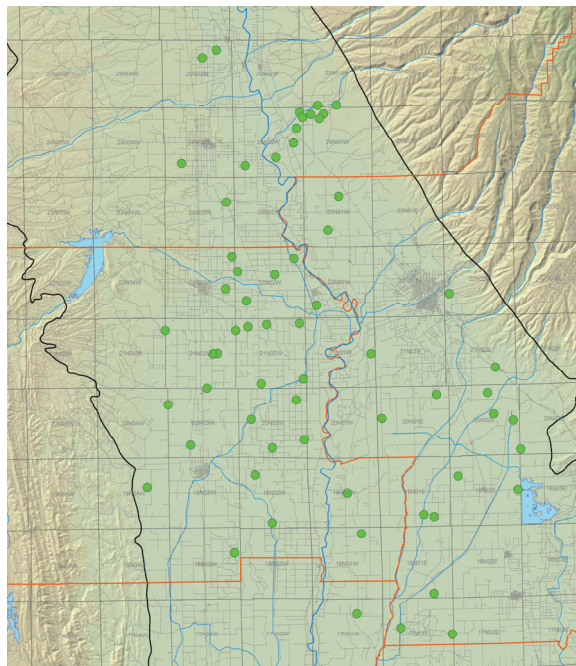
CASGEM (pronounced *KASJem*) is short for California Statewide Groundwater Elevation Monitoring.

The program was created by SBx7 6, Groundwater Monitoring, a part of the 2009 Comprehensive Water Package. By passing the bill, the Legislature established for the first time a statewide program to collect groundwater elevations, facilitate collaboration between local monitoring entities and the Department of Water Resources, and to report this information to the public.

### Why Is Groundwater Important?

In California, groundwater accounts for about 30 percent of the total water supply. During dry years, it is at least 40 percent of the supply. With a projected population of 46 million by the year 2020, California's reliance upon groundwater will increase significantly.

In order to protect and sustain the state's precious groundwater supply, proper management of this limited resource is imperative. Monitoring groundwater elevations in the state's 515 alluvial groundwater basins and subbasins is a fundamental component of successful groundwater management.



Observation well locations, Northern Sacramento Valley

### Are Groundwater Elevations Now Monitored in California?

The Department of Water Resources' four region offices monitor groundwater elevations and report the data on DWR's Water Data Library ([www.water.ca.gov/waterdatalibrary](http://www.water.ca.gov/waterdatalibrary)); however, those data are limited in some areas. Other agencies also collect groundwater elevation data, but are not required to make that data available to DWR for public use.

Implementation of the CASGEM Program will establish a statewide monitoring network for all of California's groundwater basins, and will allow that data to be used to plan for future water supply demands.

### How Does CASGEM Work?

A local agency that has jurisdiction over groundwater management in an area, as defined in the law, notifies the Department of Water Resources by January 1, 2011, that it wishes to be the designated Monitoring Entity for all or part of a groundwater basin. The Monitoring Entity defines and submits a groundwater monitoring plan to DWR that can be used to determine seasonal and long-term groundwater elevation trends in the monitoring area.

The Monitoring Entity can measure groundwater elevations or compile data from other agencies to fulfill the monitoring plan. The Monitoring Entity is also responsible for submitting that data to DWR.

DWR will continue its current monitoring program, provided funding is available.

### Is My Participation Required?

No. However, if no prospective Monitoring Entity comes forward, then DWR will assume the monitoring in the basin. Nonparticipating agencies risk losing eligibility for state water grants.

*CASGEM Program guidelines will be available in fall 2010. The document will include full details on reporting requirements and measurement procedures.*