

9-007 SAN LUIS REY VALLEY

Basin Boundaries

Summary

The San Luis Rey Valley groundwater basin is located in northwestern San Diego County. The basin underlies the San Luis Rey River and extends from the Pacific Ocean, near Oceanside, to Pauma Valley. The basin is bound on the northwest and southwest by semi-permeable Tertiary marine and non-marine sediments. Impermeable Mesozoic granitic rocks and Pre-Cretaceous metamorphic rocks of various hills and mountains bound the northern and southern extents of the basin. The basin is bound on the east by impermeable rocks of Palomar Mountain and Rodriguez Mountain. The San Luis Rey River drains the valley westwards toward the Pacific Ocean. Average annual precipitation ranges from seven to 21 inches. The boundary is defined by the eight (8) segments detailed in the description below.

Segment Descriptions

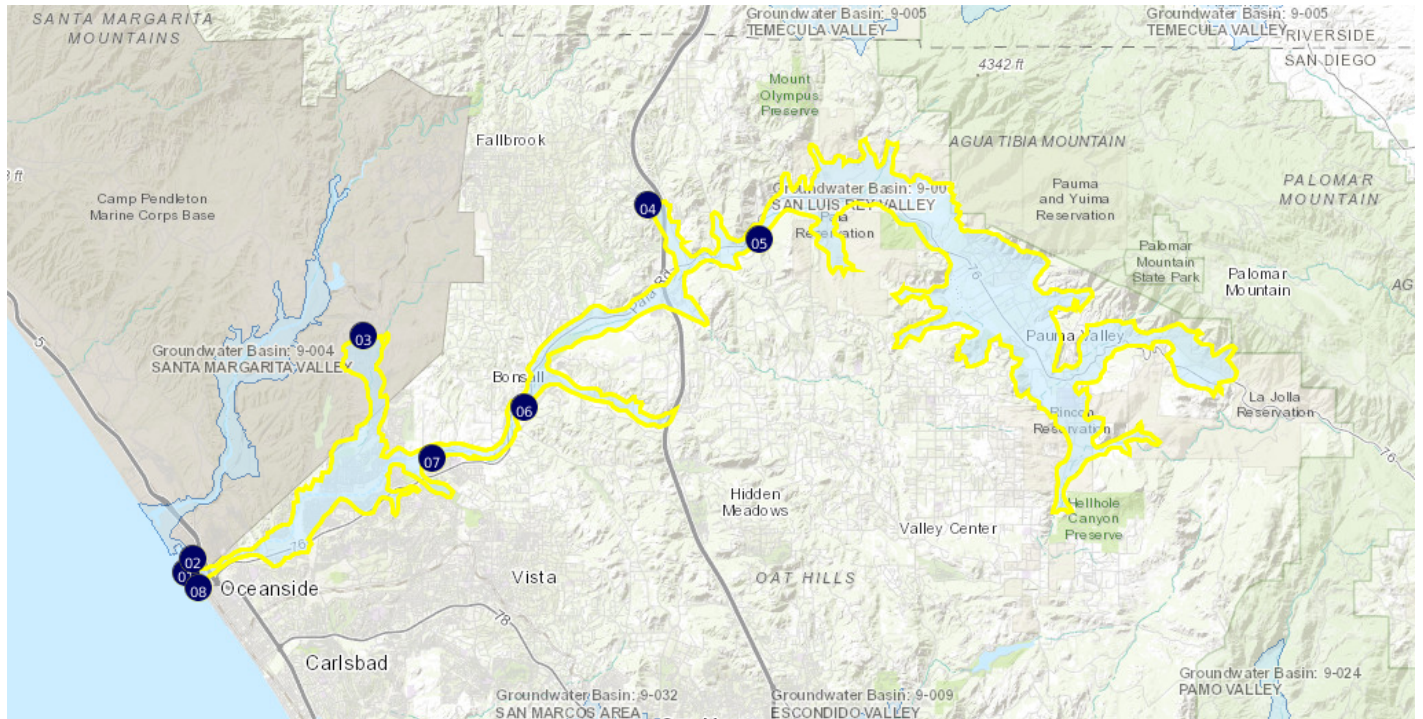
<u>Segment Label</u>	<u>Segment Type</u>	<u>Description</u>	<u>Ref</u>
1-2	^E Ocean	Begins at point (1) and follows Oceanside Harbor to point (Y).	{a}
2-3	^E Alluvial	Continues from point (2) and follows the contact of alluvium with marine sediments to point (3).	{b}
3-4	^E Alluvial	Continues from point (3) and follows the contact of alluvium with Mesozoic granitic rocks to point (4).	{b}
4-5	^E Alluvial	Continues from point (4) and follows the contact of alluvium with Jurassic marine sediments and Mesozoic intrusive rocks to point (5).	{b}
5-6	^E Alluvial	Continues from point (5) and follows the contact of alluvium with Mesozoic granitic rocks to point (6).	{b}
6-7	^E Alluvial	Continues from point (6) and follows the contact of alluvium with Jurassic marine sediments and Mesozoic intrusive rocks to point (7).	{b}
7-8	^E Alluvial	Continues from point (7) and follows the contact of alluvium with marine sediments to point (8).	{b}
8-1	^E Ocean	Continues from point (8) and generally follows the Pacific Ocean and ends at point (1).	{a}

Significant Coordinates

<u>Point</u>	<u>Latitude</u>	<u>Longitude</u>	
1	33.207955117	-117.396988132	
2	33.213685436	-117.393808483	
3	33.306768259	-117.308515625	
4	33.360912637	-117.166420268	
5	33.346527396	-117.111004324	
6	33.276540441	-117.228245855	
7	33.25542043	-117.273957531	
8	33.201443593	-117.390752376	

Map

9-007 SAN LUIS REY VALLEY



<https://sgma.water.ca.gov/webgis/?appid=160718113212&subbasinid=9-007>

References

<u>Ref</u>	<u>Citation</u>	<u>Pub Date</u>	<u>Global ID</u>
{a}	United States Geological Survey (USGS), National Hydrography Dataset, Flowline Dataset for California, note: Coordinated effort among the United States Department of Agriculture-Natural Resources Conservation Service (USDA-NRCS), the United States Geological Survey (USGS), and the Environmental Protection Agency (EPA).URL: http://nhd.usgs.gov/data.html	2/1/2016	1
{b}	California Geological Survey (CGS), Geologic Atlas of California Map No. 019, Santa Ana Sheet, 1:250,000, Thomas H. Rogers.URL: http://www.quake.ca.gov/gmaps/GAM/santaana/santaana.html	1965	25

Footnotes

- I: Internal
- E: External