

# 4-004.07 SANTA CLARA RIVER VALLEY - SANTA CLARA RIVER VALLEY EAST

## Basin Boundaries

### *Summary*

The Santa Clara River Valley East groundwater subbasin is located in the central-western portion of Los Angeles County. The subbasin is bound on the north by the Piru Mountains and on the east and southeast by the San Gabriel Mountains. The Santa Susana Mountains bound the south side of the subbasin. The subbasin is bound on the west by the Modelo Formation, the Saugus Formation, and a thinning of the alluvium near the adjoining Piru subbasin (DPW, 1933). The area overlying the basin is drained by the Santa Clara River, Bouquet Creek, and Castaic Creek. Average annual precipitation ranges from 14 to 16 inches. The subbasin boundary is defined by four (4) segments detailed in the descriptions below.

### *Segment Descriptions*

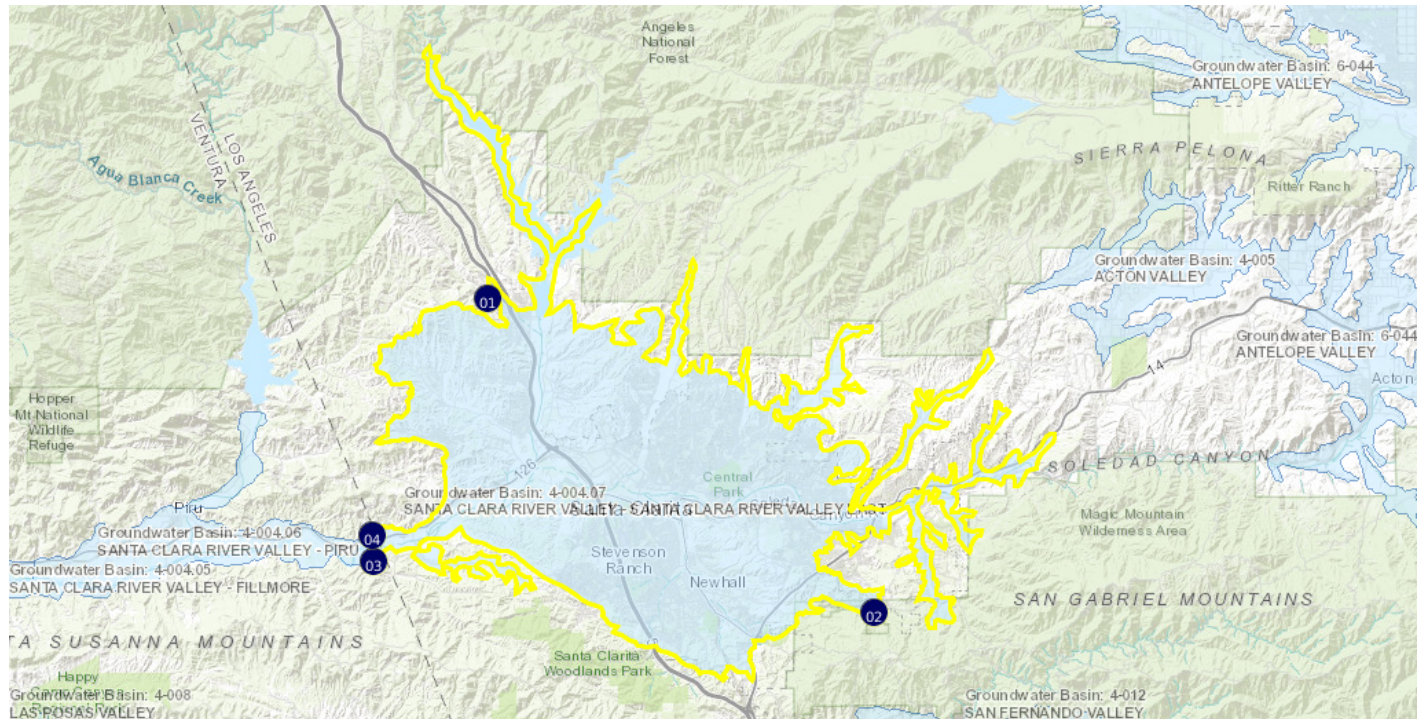
| <u>Segment Label</u> | <u>Segment Type</u>          | <u>Description</u>   | <u>Ref</u> |
|----------------------|------------------------------|--|------------|
| 1-2                  | <sup>E</sup><br>Alluvial     | Begins from point (1) and generally follows the contact of Quaternary alluvium and Plio-Pleistocene nonmarine deposits with Miocene marine and nonmarine rocks and various crystalline rocks to point (2). | {a}        |
| 2-3                  | <sup>E</sup><br>Alluvial     | Continues from point (2) and generally follows the contact of Quaternary alluvium and Plio-Pleistocene nonmarine deposits with Pliocene and Miocene marine deposits and crystalline rocks to point (3).    | {a}        |
| 3-4                  | <sup>I</sup><br>Non-Alluvial | Continues from point (3) and crosses the Quaternary alluvium, following outcropped shale and thin alluvium to point (4).   | {b}        |
| 4-1                  | <sup>E</sup><br>Alluvial     | Continues from point (4) and generally follows the contact of Quaternary alluvium and Plio-Pleistocene nonmarine deposits with Pliocene marine deposits and ends at point (1).                             | {a}        |

***Significant Coordinates***

| <b><u>Point</u></b> | <b><u>Latitude</u></b> | <b><u>Longitude</u></b> |  |
|---------------------|------------------------|-------------------------|--|
| 1                   | 34.504817611           | -118.637426151          |  |
| 2                   | 34.375561346           | -118.444070019          |  |
| 3                   | 34.396228086           | -118.694333966          |  |
| 4                   | 34.40721481            | -118.694794468          |  |

## Map

### 4-004.07 SANTA CLARA RIVER VALLEY - SANTA CLARA RIVER VALLEY EAST



<https://sgma.water.ca.gov/webgis/?appid=160718113212&subbasinid=4-004.07>

## References

| <u>Ref</u> | <u>Citation</u>  | <u>Pub Date</u> | <u>Global ID</u> |
|------------|--|-----------------|------------------|
| {a}        | California Geological Survey (CGS), Geologic Atlas of California Map No. 008, Los Angeles Sheet, , 1:250,000, Charles W. Jennings and Rudolph G. Strand.URL: <a href="http://www.quake.ca.gov/gmaps/GAM/losangeles/losangeles.html">http://www.quake.ca.gov/gmaps/GAM/losangeles/losangeles.html</a> | 1969            | 33               |
| {b}        | California State Water Resources Board, Ventura County Investigation, Bulletin 12, Vol. 1. <a href="https://archive.org/details/venturacountyinv12cali">https://archive.org/details/venturacountyinv12cali</a>   | 1953            | 77               |

## Footnotes

- I: Internal
- E: External