

# 3-004.09 SALINAS VALLEY - LANGLEY AREA

## Basin Boundaries

### Summary

The Langley Area Subbasin is in the northern portion of the Salinas Valley Groundwater Basin. The northern boundary is defined by the combination of the Pajaro Valley Water Management Agency, and the contact between the alluvium and the granitic rocks. The Subbasin extends east to the edge of the Chualar watershed. The southern and western boundaries are UNKNOWN. The Subbasin is defined by the seven (7) segments detailed in the descriptions below.

### Segment Descriptions

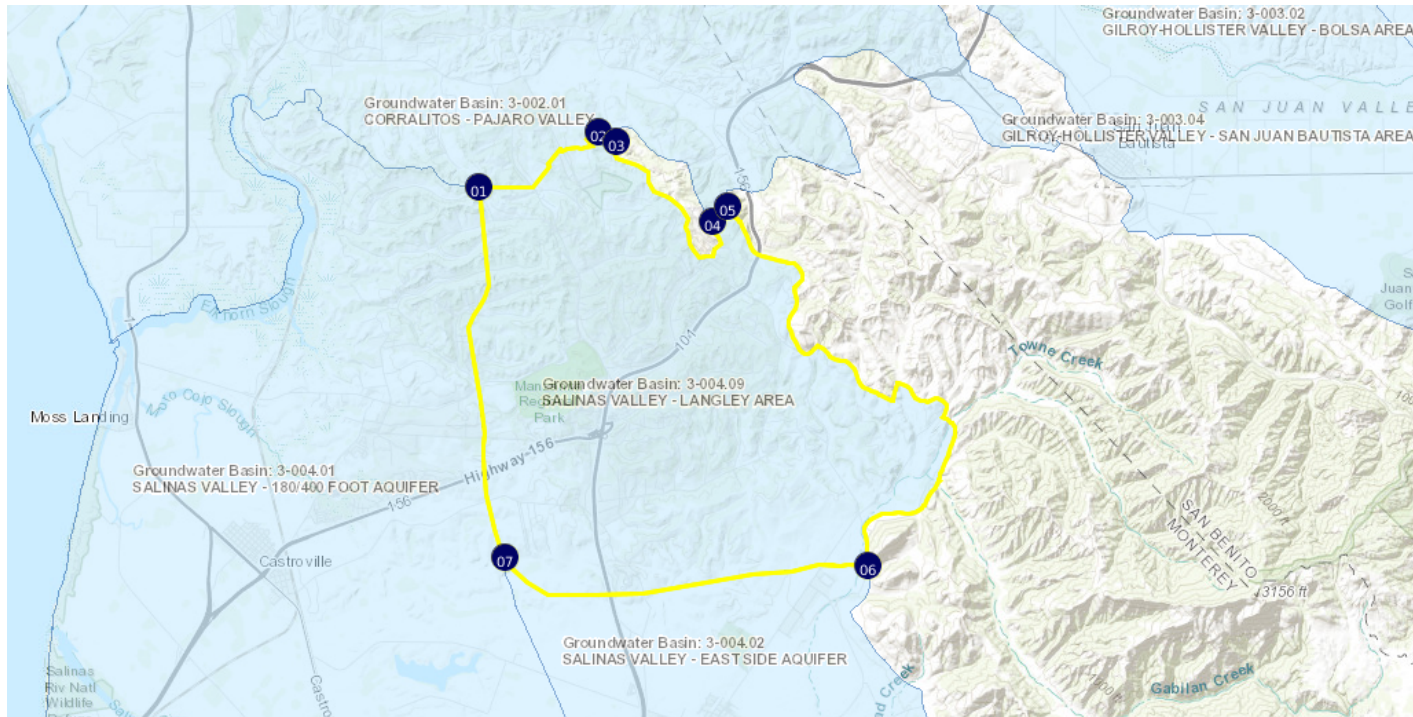
<u>Segment Label</u>	<u>Segment Type</u>	<u>Description</u>	<u>Ref</u>
1-2	<sup>I</sup> Water Agency	Starts from point (1) and follows the Pajaro Valley Water Management Agency boundary to point (2).	{a}
2-3	<sup>I</sup> Non-Alluvial	Continues from point (2) and crosses thin alluvium to point (3).	{b}
3-4	<sup>E</sup> Alluvial	Continues from point (3) and follows the contact between the valley alluvium and the granitic rocks to point (4).	{b}
4-5	<sup>I</sup> Watershed	Continues from point (4) and follows the boundary between the Central Coastal watersheds of Bolsa Nueva and Chualar to point (5).	{c}
5-6	<sup>E</sup> Alluvial	Continues from point (5) and follows the contact between the valley alluvium and the granitic rocks to point (6).	{b}
6-7	<sup>I</sup> Unknown	Continues from point (6) and follows UNKNOWN FEATURE to point (7).	{d}
7-1	<sup>I</sup> Unknown	Continues from point (7) and follows UNKNOWN FEATURE to end at point (1).	{d}

*Significant Coordinates*

<u>Point</u>	<u>Latitude</u>	<u>Longitude</u>	
1	36.838835741	-121.698152472	
2	36.849804882	-121.668075786	
3	36.847942525	-121.663763923	
4	36.832078758	-121.639630868	
5	36.834899685	-121.635939716	
6	36.763285948	-121.600811129	
7	36.764890714	-121.691573755	

**Map**

**3-004.09 SALINAS VALLEY - LANGLEY AREA**



<https://sgma.water.ca.gov/webgis/?appid=160718113212&subbasinid=3-004.09>

**References**

<u>Ref</u>	<u>Citation</u>	<u>Pub Date</u>	<u>Global ID</u>
{a}	California Department of Water Resources (DWR), Water Agencies Dataset.URL: <a href="https://gis.water.ca.gov/app/bbat/">https://gis.water.ca.gov/app/bbat/</a>	2016	48
{b}	California Geological Survey (CGS), Geologic Atlas of California Map No. 020, Santa Cruz Sheet, , 1:250,000, Charles W. Jennings and Rudolph G. Strand .URL: <a href="http://www.quake.ca.gov/gmaps/GAM/santacruz/santacruz.html">http://www.quake.ca.gov/gmaps/GAM/santacruz/santacruz.html</a>	1958	34
{c}	United States Geological Survey (USGS), National Hydrography Dataset, Watershed Boundary Dataset for California, note: Coordinated effort among the United States Department of Agriculture-Natural Resources Conservation Service (USDA-NRCS), the United States Geological Survey (USGS), and the Environmental Protection Agency (EPA).URL: <a href="http://datagateway.nrcs.usda.gov">http://datagateway.nrcs.usda.gov</a>	2016	49
{d}	Unknown/other/new	varies	46

Footnotes

- I: Internal
- E: External