



## How-To Guide for Using the Basin Profile Template

### SUSTAINABLE GROUNDWATER MANAGEMENT Preserving Our Valuable Groundwater Resources

#### A New Approach to Management

Groundwater provides 40 to 60 percent of California's water supply, and is a critical resource for communities, farmers, and the environment. Groundwater has been overused in various parts of the state for decades. Overdraft is a term used where more groundwater is pumped out of a basin than what flows into it by either natural or human recharge efforts.

SGMA, or the Sustainable Groundwater Management Act, was signed into law in 2014 and requires local entities to form Groundwater Sustainability Agencies (GSAs) of high- and medium-priority basins to work with their communities to manage their groundwater basins sustainably. GSAs are responsible for developing and implementing Groundwater Sustainability Plans (GSPs) to achieve their sustainability goal within 20 years while avoiding undesirable results. These efforts will help to preserve groundwater resources for future generations.

#### Name of Basin/Subbasin

#### Our Shared Groundwater Basin/Subbasin

The **Basin/Subbasin name** (see **Basin/Subbasin**) helps to meet the water needs of our community. The **GSP number** (see **GSP**) is path forward to addressing overdrift and for achieving groundwater sustainability in our **Basin/Subbasin**.

For the most up to date **Basin/Subbasin** visit the link below: **Basin/Subbasin**

Space for map of groundwater basin/subbasin

#### Groundwater Users in our Area:

The **Basin/Subbasin** (see **Basin/Subbasin**)

Annual Pumping of Groundwater: **XXXXXX** acre-feet per year

Annual Overdraft of Groundwater: **XXXXXX** acre-feet per year

SGMA Basin Prioritization: **Category** (see **Basin/Subbasin**)

Initial **SGMA** Submission Due to DWR: **XXXXXX**

Sustainability Goal to be Achieved By: **XXXXXX**

SGMA Entities: **XXXXXX**

**Basin/Subbasin**

### Purpose of the Basin Profile Template

The Department of Water Resources (DWR) has developed a template for Groundwater Sustainability Agencies (GSAs) to communicate with interested parties including elected officials, community members, and other groundwater users in their basin/subbasin. The Template is meant to be modified by GSA staff for their basin; with the completed version distributed as a hard copy flyer, in electronic form sent via email or available on the GSA website. For those with alternatives to Groundwater Sustainability Plans (GSPs), the Template can be modified to meet the communication needs of the basin. The Template is available for

download by GSAs at DWR's Assistance and Engagement website, here: <https://water.ca.gov/Programs/Groundwater-Management/Assistance-and-Engagement>.

### General Information

The Template includes general information developed to briefly describe the statewide context of sustainable groundwater management. It is applicable to all basins and doesn't require the GSAs to change or fill out. If you want to edit this boilerplate text, this text can be modified by clicking "Slide Master" under the "View" category in the PowerPoint application.

### SUSTAINABLE GROUNDWATER MANAGEMENT Preserving Our Valuable Groundwater Resources

#### A New Approach to Management

Groundwater provides 40 to 60 percent of California's water supply, and is a critical resource for communities, farmers, and the environment. Groundwater has been overused in various parts of the state for decades. Overdraft is a term used where more groundwater is pumped out of a basin than what flows into it by either natural or human recharge efforts.

SGMA, or the Sustainable Groundwater Management Act, was signed into law in 2014 and requires local entities to form Groundwater Sustainability Agencies (GSAs) of high- and medium-priority basins to work with their communities to manage their groundwater basins sustainably. GSAs are responsible for developing and implementing Groundwater Sustainability Plans (GSPs) to achieve their sustainability goal within 20 years while avoiding undesirable results. These efforts will help to preserve groundwater resources for future generations.

#### Name of Basin/Subbasin

#### Our Shared Groundwater Basin/Subbasin

The **Basin/Subbasin name** (see **Basin/Subbasin**) helps to meet the water needs of our community. The **GSP number** (see **GSP**) is path forward to addressing overdrift and for achieving groundwater sustainability in our **Basin/Subbasin**.

For the most up to date **Basin/Subbasin** visit the link below: **Basin/Subbasin**

Space for map of groundwater basin/subbasin

#### Groundwater Users in our Area:

The **Basin/Subbasin** (see **Basin/Subbasin**)

Annual Pumping of Groundwater: **XXXXXX** acre-feet per year

Annual Overdraft of Groundwater: **XXXXXX** acre-feet per year

SGMA Basin Prioritization: **Category** (see **Basin/Subbasin**)

Initial **SGMA** Submission Due to DWR: **XXXXXX**

Sustainability Goal to be Achieved By: **XXXXXX**

SGMA Entities: **XXXXXX**

**Basin/Subbasin**

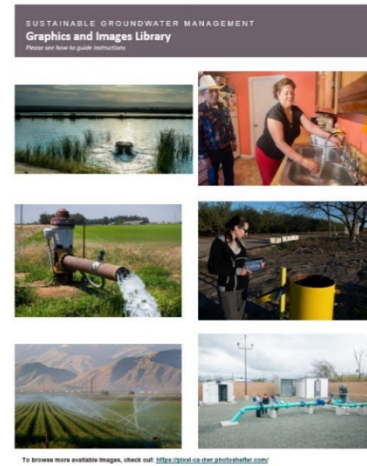
### Basin-Specific Information

The template provides text boxes for GSAs to insert tailored information specific to their basins. These prompts are highlighted in light blue in the Template. Upon completion of appropriate edits, be sure to remove the light blue highlighting and the instruction text. This information can be pulled directly from the basin's GSP(s) to help communicate ongoing and developing planning efforts.



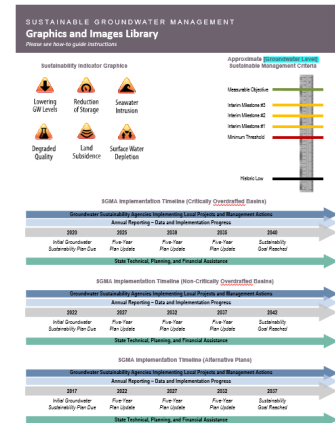
## Graphics and Images

GSA staff can customize graphics or images in the designated boxes in the Template. DWR encourages GSA staff to use figures from their GSP, Alternative to a GSP, or photographs of their basin. Several graphics and images are provided on pages 3 and 4 of the Template for GSAs to use if needed. If you would like to browse for additional photographs, check out DWR’s Photo Gallery (<https://pixel-ca-dwr.photoshelter.com/>). To make photos accessible for people with limited vision, you can add alternative text (often called ‘alt text’) to any photos or graphics. You can add alt text by right clicking on the image and selecting “Edit Alt Text” from the pop-up box. Alt text should describe an image in 100 characters or less and provide an overview of what is shown and the purpose for including it in the materials.



The following are the graphics provided with the Template for GSA modification:

- Approximate Sustainable Management Criteria:** this graphic is provided for GSA staff to modify to show relative levels of Minimum Thresholds, Interim Milestones, Measurable Objectives, and the historic low for each sustainability indicator. Each bar and label can be modified by clicking on the graphic. Right click the graphic to find the formatting menu and select the ‘Group’ category to ungroup the graphic to be able to move bars and labels as applicable.
- Sustainability Indicator Graphics:** the six SGMA sustainability indicators are provided for GSA staff to use as an accompanying graphic for the companion text. Sustainability indicators that are not applicable in the basin can be removed from the template if desired.
- SGMA Implementation Timeline:** three versions (Critically Overdrafted, Non-Critically Overdrafted, Alternative Plan) of this graphic are provided to match the implementation timeline for each basin. Select the timeline applicable for your basin.



## Finalizing Your Basin Profile File

Once you are done modifying the PowerPoint file, you can save it as a PDF to print, send as an email attachment, or add to a website. To save as a PDF, click “File” in the menu bar, then click “Save As Adobe PDF”, then select “Options” to change the Slide Range to only the first two slides. After you save as a PDF, double check to make sure all bright blue highlights have been removed, and that the PDF file only contains the first two pages and excludes the Graphics and Images Library.