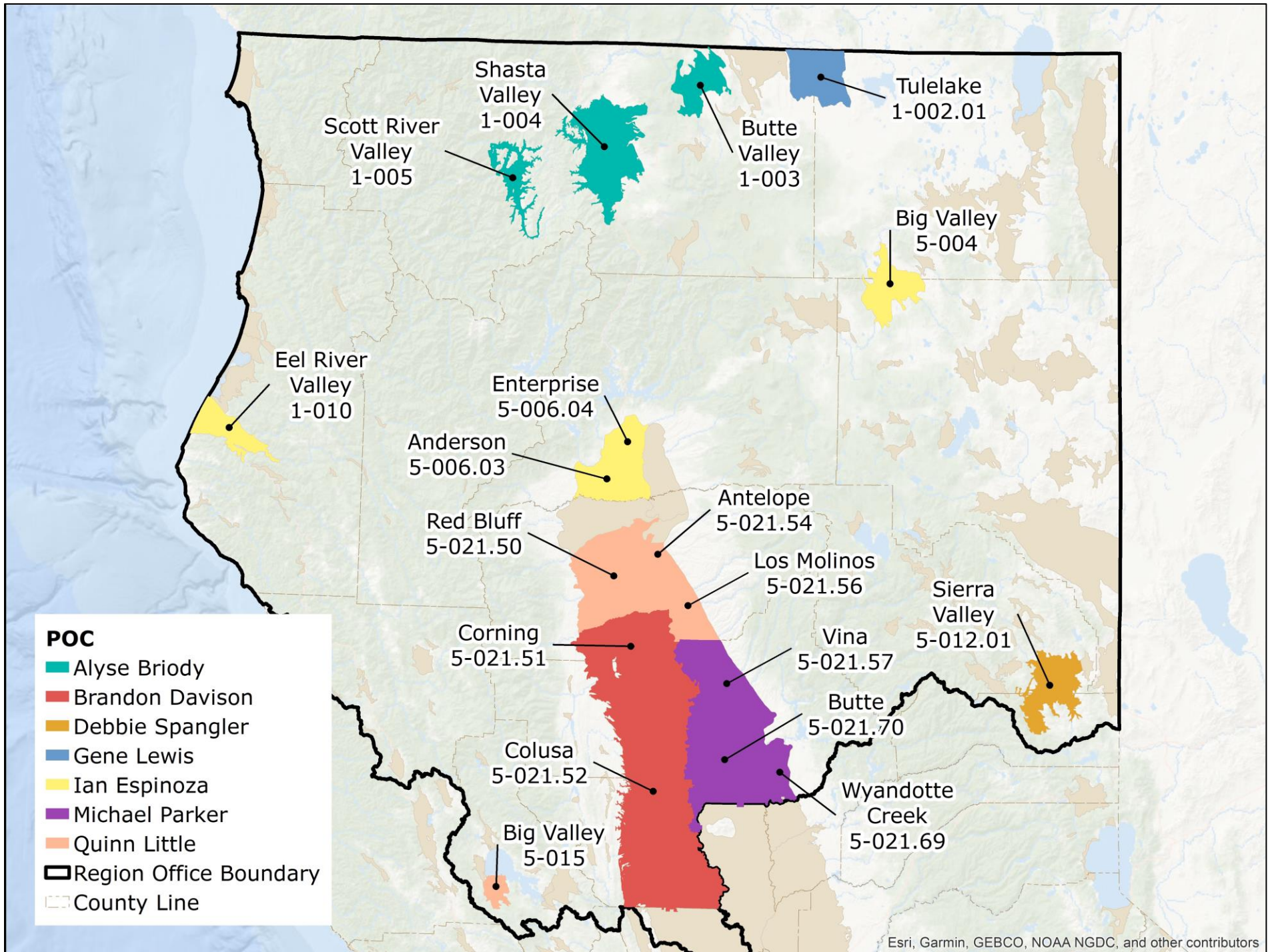
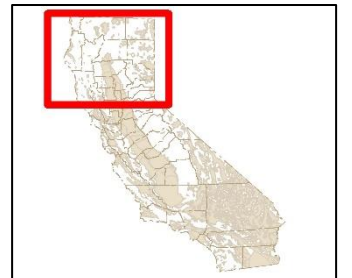


Northern Region Office

SGMA Points of Contact – Subject to Change



This map illustrates the Point of Contact (POC) for each listed groundwater basin. DWR has POCs for your use when contacting DWR with questions related to SGMA. If a groundwater basin of interest is not listed on the map or table below, and you have questions, please email SGMP_RC@water.ca.gov. POCs will get back to you during regular business hours as soon as possible. This map is current as of July 2023 and subject to change.



Alyse Briody	Alyse.Briody@water.ca.gov	530-489-8161	Butte Valley (1-003), Shasta Valley (1-004), Scott River Valley (1-005)
Brandon Davison	Brandon.Davison@water.ca.gov	530-529-7379	Sacramento Valley – [Corning (5-021.51), Colusa (5-021.52)]
Debbie Spangler	Debbie.Spangler@water.ca.gov	530-410-3030	Sierra Valley - Sierra Valley (5-012.01)
Gene Lewis	Gene.Lewis@water.ca.gov	530-410-5339	Klamath River Valley - Tulelake (1-002.01)
Ian Espinoza	Ian.Espinoza@water.ca.gov	530-200-6125	Eel River Valley (1-010), Redding Area – [Anderson (5-006.03), Enterprise (5-006.04)], Big Valley (5-004)
Michael Parker	Michael.Parker@water.ca.gov	530-317-8551	Sacramento Valley – [Vina (5-021.57), Wyandotte Creek (5-021.69), Butte (5-021.70)]
Quinn Little	Quinn.Little@water.ca.gov	530-967-8040	Big Valley (5-015), Sacramento Valley – [Antelope (5-021.54), Red Bluff (5-021.50), Los Molinos (5-021.56)]

