

DOCUMENT 00003

NOTICE OF INSPECTION TRIP

DRAINAGE CULVERT REPLACEMENT
WILLOW SLOUGH BYPASS
STATE WATER FACILITIES
DIVISION OF FLOOD MANAGEMENT
YOLO COUNTY
CALIFORNIA
SPECIFICATION NO. 19-07
CONTRACT NO. C51589

An inspection trip for prospective bidders will be conducted at the work site. The inspection trip is expected to take approximately 2 hours. Interested parties are requested to schedule their time so as to make the trip on the same day.

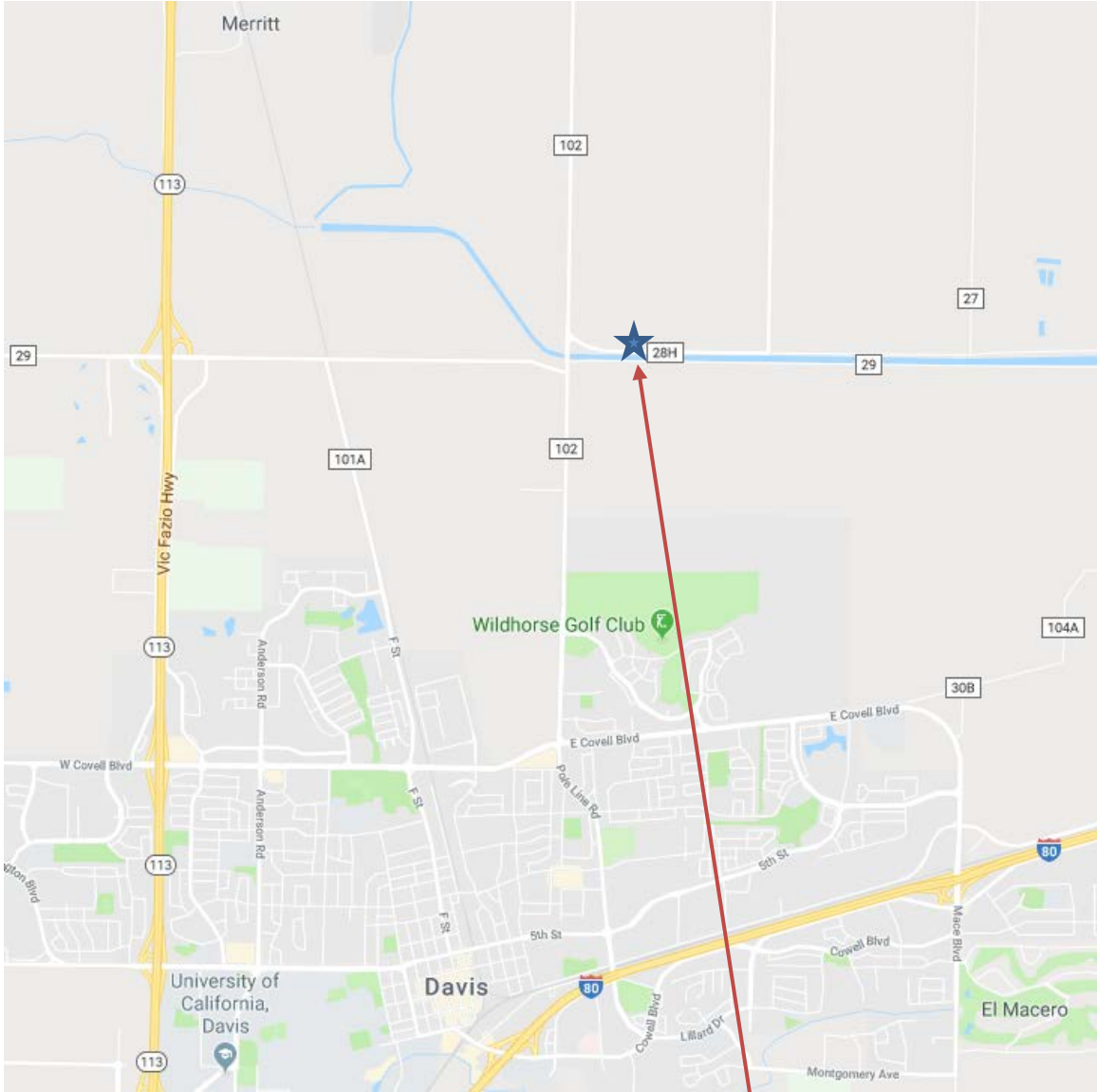
Interested parties are requested to meet on **TUESDAY, SEPTEMBER 17, 2019 at 10:00 A.M.** at the work site located in Yolo County and approximately 15 miles west of the City of Sacramento. Access to the meeting site is as follows:

From Sacramento, drive west on I-80 approximately 5 miles to exit 78 for Road 32A toward E Chiles Road. Turn left onto Road 32A and drive approximate 2 miles onto Road 105. Turn right on to Road 105 and drive approximately 2 miles to the intersection of County Road 28H. Turn left on County Road 28H and drive approximately 2.5 miles west to the Willow Slough Bypass work site.

Please call the Department of Water Resources at (916) 653-4867 2 days in advance of the inspection trip if you plan to attend or have questions.

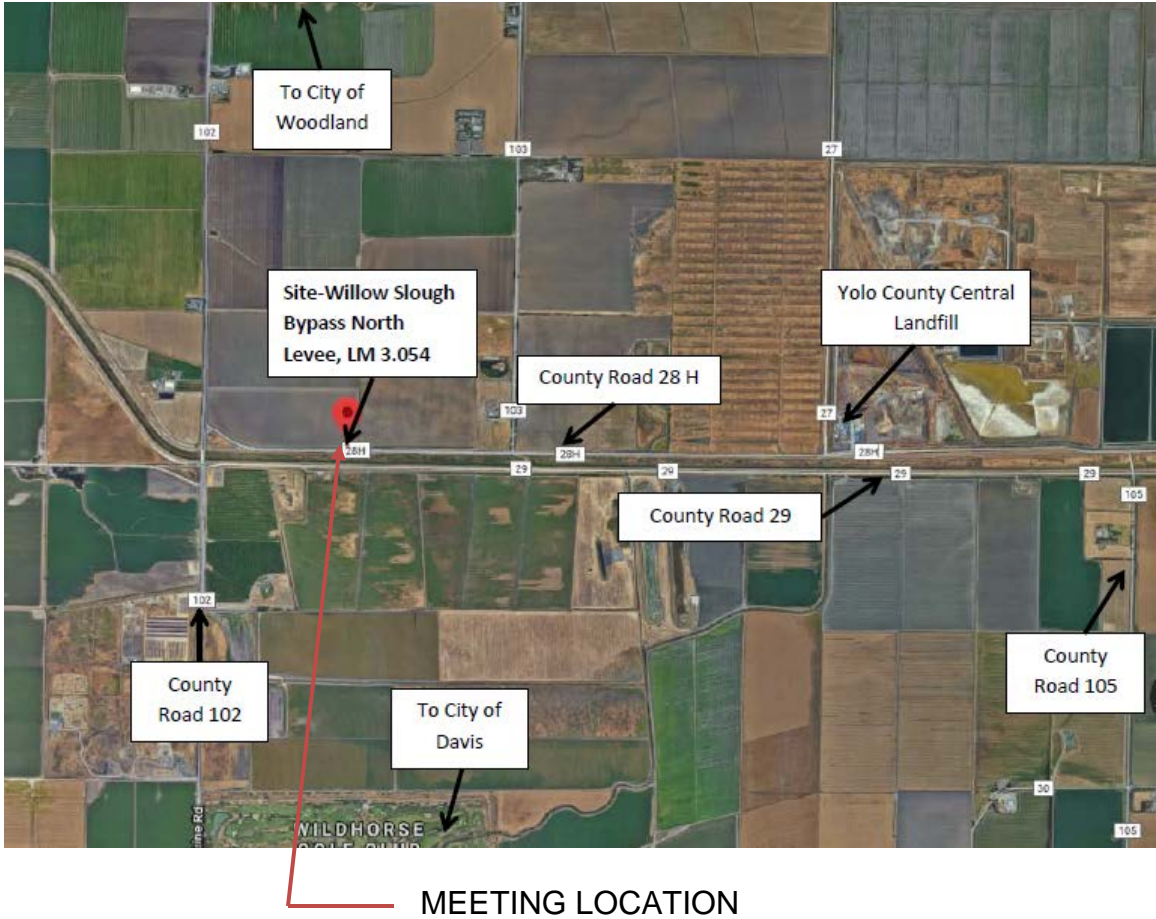
(See maps on following pages.)

Notice of Inspection Trip



MEETING LOCATION

VICINITY MAP



AREA MAP