



Modernizing Water Infrastructure - Protecting Supplies

The Delta Conveyance Project (DCP) will recover water supply losses caused by climate-driven weather extremes, sea level rise, and earthquakes.

Adding new infrastructure will optimize the safe capture and movement of water from big, but infrequent storm events that have become California's new normal.

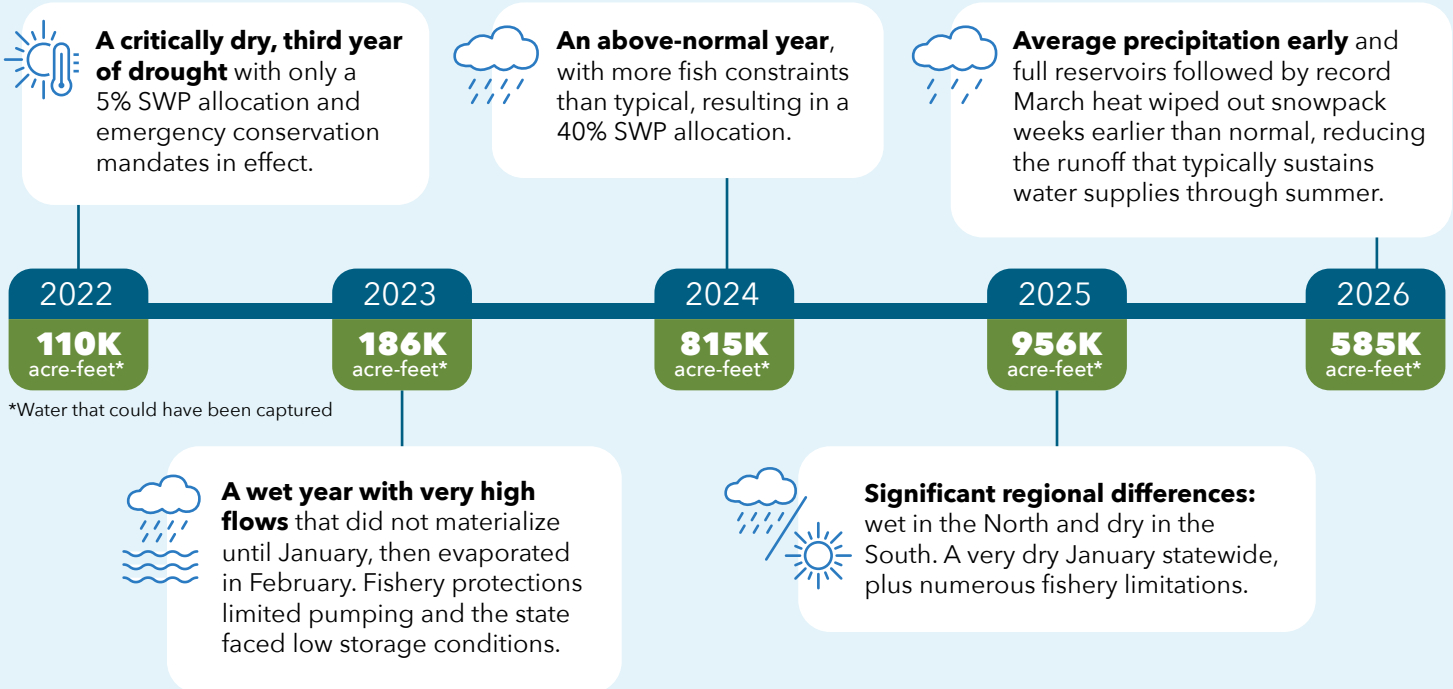
Water quality and fisheries remain protected. Water supplies that would otherwise be lost without modernized infrastructure will be restored.

California's Climate Reality

- Over the last few decades, California's climate has changed with an increase in the variability of precipitation and wild swings from drought to flood.
- Over the next 20 years, California could lose 10% of its overall water supplies and delivery capability.
- By 2045, the reliability of the State Water Project (SWP) could be reduced as much as 23%, while the need for water continues to grow.

The Past 5 Water Years Prove the Value of the DCP

If the DCP had been in place over the past five very different water years, California would have captured more than **2.6 million** acre-feet of water.



2026 underscored California's growing climate volatility, with warmer storms, less snow, and operational restrictions limiting water movement during key periods.

Reliable supplies provided by the DCP will help water managers stabilize rates, fill storage, protect reserves during drought, minimize mandatory rationing, and reduce the severity and frequency of shortages.



SWP in California

Homes, families, businesses and farmland in communities across the state depend on SWP water—from the Bay Area, Central Coast, Central Valley, and Southern California. The SWP is and will remain one of the most affordable sources of water in California and must be maintained for future generations.



27M PEOPLE receive clean, safe and affordable water from the SWP, including 8.2 million disadvantaged community members



750k ACRES of farmland are irrigated with SWP water





Water supplied by the SWP sustains the world's **4th** LARGEST ECONOMY



IMPORTANT FOUNDATION for local water supply projects, including groundwater recharge, recycling, storage and others

Making Progress to Secure California's Water Supplies

The Department of Water Resources (DWR) has made considerable progress in completing complex state and federal planning and permitting processes, in addition to movement on the community engagement, design and engineering, and planning funding aspects of project development.

 Percent Complete  Percent Remaining

