



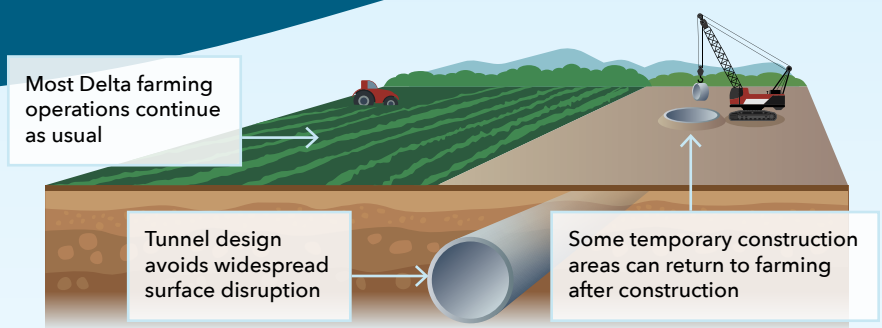
## A Realistic Look at Community Effects

# DCP engineering, design and mitigation minimize or entirely avoid local impacts.

### Agriculture

**Designed to reduce agricultural disruption.**

*Less than 0.5% of Delta farmland affected.  
More than 99.5% unaffected.*

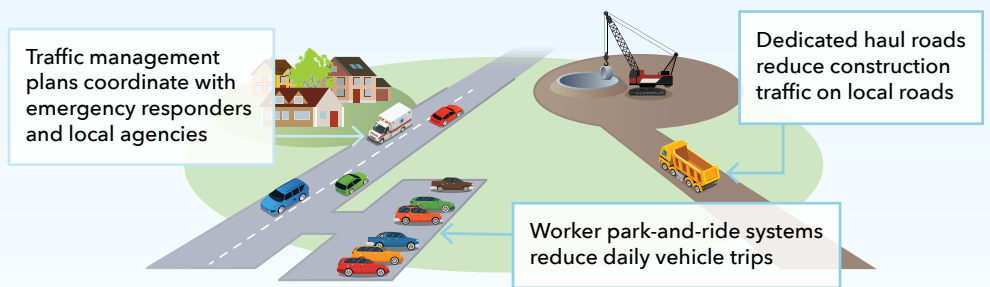


**DWR committed to preserving farmland at a 1:1 ratio**

### Traffic

**Focused construction areas.  
Managed traffic impacts.**

*Construction traffic largely routed away from local communities.*

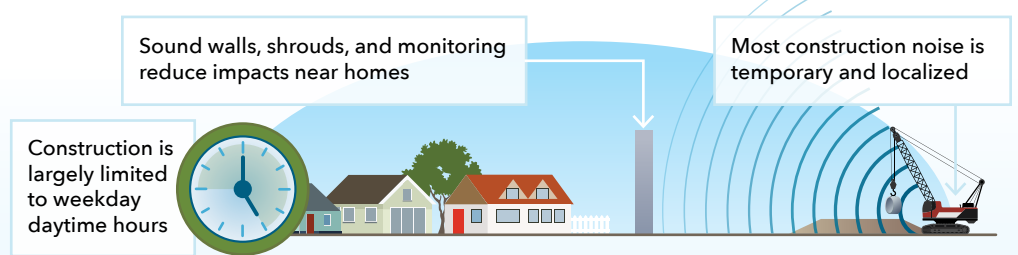


**No measurable increase in routine travel times after mitigation**

### Noise

**Temporary construction activity – not region-wide disruption.**

*Significantly minimized noise disruptions.*



**Home insulation or temporary relocation available in some circumstances.**

### Accountability

**The project includes:**



Enforceable mitigation requirements



Ongoing monitoring



A project ombudsman



\$200 million Community Benefits Program

