

# Delta Conveyance Project

Modernizing California's Water Infrastructure | 2025



## Fast Facts

### WATER SUPPLY RELIABILITY

The Delta Conveyance Project protects against future water supply losses caused by climate driven weather extremes, sea level rise and earthquakes. It will help the State Water Project (SWP) safely capture, move and store water from big, but infrequent, storm events.



Climate change means more rain in the winter and more runoff and river flows than before.



According to the United States Geological Survey there is a **72% chance of a 6.7 or greater magnitude earthquake** occurring in the Bay Area by 2043 that could cause levees in the Delta to fail, crippling the state's ability to deliver clean water.



Significant sea level rise predicted by **2100**.



Sierra snowpack, the state's largest source of surface water, will be reduced by **65%** on average by century's end.

### MISSED OPPORTUNITY

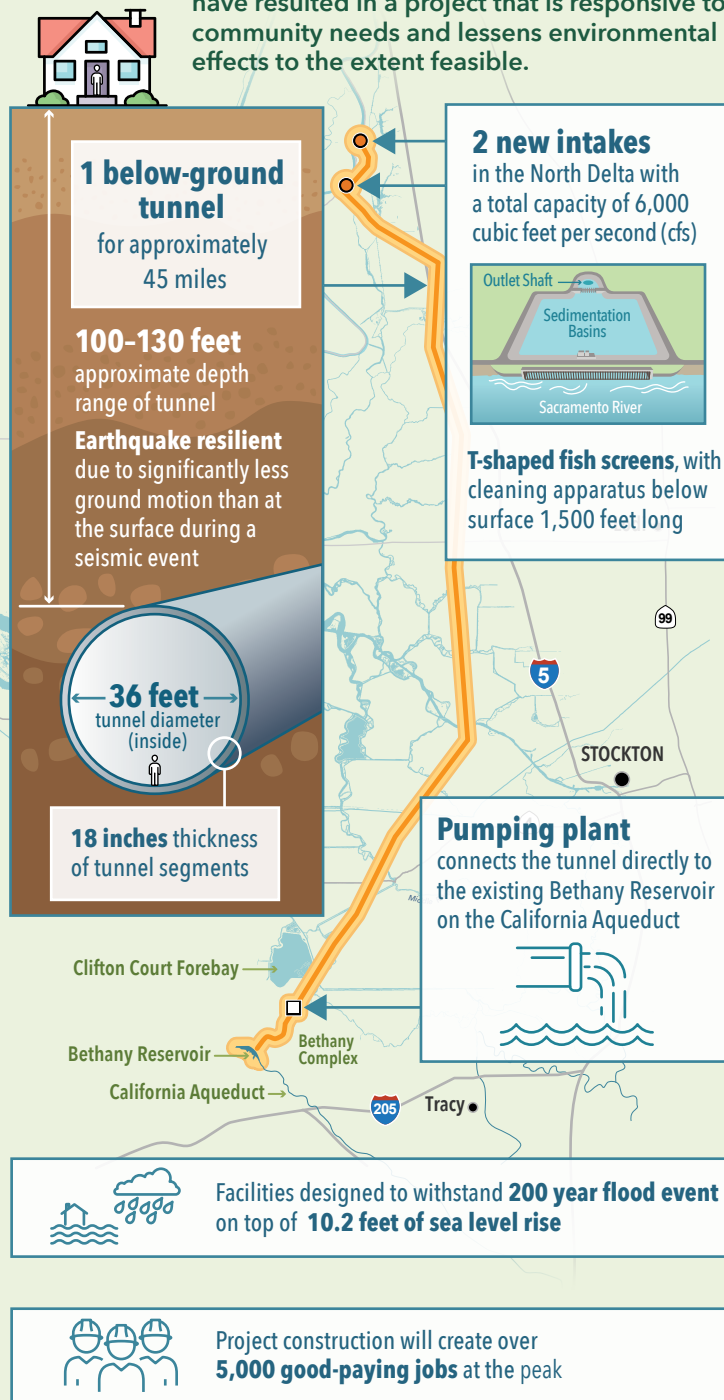
If the Delta Conveyance Project was operational over the past four winters, a significant amount of water could have been captured and moved.

	Amount of water that could have been captured:*	That's enough water to supply:
Water Year 2022	<b>110,000</b> acre-feet	Over <b>1.1 MILLION</b> people for one year <b>OR</b> Over <b>385,000</b> households for one year
Water Year 2023	<b>186,000</b> acre-feet	Nearly <b>2 MILLION</b> people for one year <b>OR</b> Over <b>650,000</b> households for one year
Water Year 2024	<b>815,000</b> acre-feet	Over <b>8.5 MILLION</b> people for one year <b>OR</b> Over <b>2.8 MILLION</b> households for one year
Water Year 2025 (through May 15, 2025)	<b>952,000</b> acre-feet	Nearly <b>10 MILLION</b> people for one year <b>OR</b> Over <b>3.3 MILLION</b> households for one year

\*Estimates have been updated to reflect the Incidental Take Permit

### MODERNIZED WATER INFRASTRUCTURE

Use of design and engineering innovations have resulted in a project that is responsive to community needs and lessens environmental effects to the extent feasible.



# Delta Conveyance Project

Modernizing California's Water Infrastructure | 2025



## IMPORTANT WATER SUPPLY

The [State Water Project](#) is an important water supply for California that can't be replaced.



### 27 MILLION PEOPLE

receive clean, safe and affordable water from the SWP, including nearly 7 million disadvantaged community members



### 750,000 ACRES OF FARMLAND

are irrigated with SWP water



Water supplied by the SWP sustains the world's **FOURTH LARGEST ECONOMY**



**2/3** of California's water originates in the **SIERRA NEVADA MOUNTAINS**



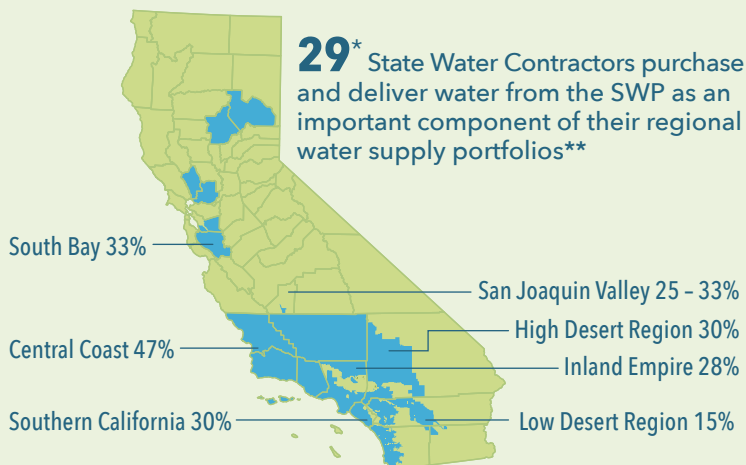
**50%** of California's water supply flows through the Delta and is delivered to **3 OUT OF 5 CALIFORNIANS**



**\$400** billion in contributions to California's economy by SWP water



**Important foundation** for local water supply projects, including groundwater recharge, recycling, storage and others



**29\*** State Water Contractors purchase and deliver water from the SWP as an important component of their regional water supply portfolios\*\*

\*Of the 29 State Water Contractors, 18 are currently participating in the Delta Conveyance Project  
\*\*Percentages represent regional water supplies dependent on reliable Delta infrastructure

## EXTENSIVE PUBLIC ENGAGEMENT



### Community Benefits Program

Acknowledge and address the reality that project impacts are local to the Delta, but direct project benefits accrue to other parts of the state



### Community Engagement

Engaged with Delta communities to hear their ideas and concerns through a **Stakeholder Engagement Committee** comprised of Delta residents, business owners and other stakeholders, and an [Environmental Justice community survey](#)



### Tribal Engagement

Inclusive and dedicated engagement with Tribal leadership, representatives and communities through formal consultation, informational meetings and workshops, tours and site visits, among other outreach efforts

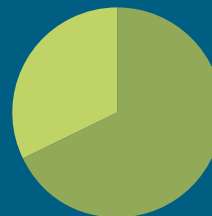


### Environmental Review

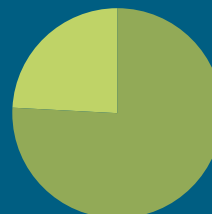
**142-day** comment period, where **729 letters** and other communications totaling **7,300 individual comments** were received

## SUPPORT FOR MODERNIZING WATER INFRASTRUCTURE

The public is highly concerned about the condition of state and local water infrastructure and a [recent poll](#) shows voters strongly support increased funding for water-related infrastructure and are extremely supportive of building a new tunnel.



**68%** of California voters rate the "condition of state and local water supply infrastructure like reservoirs, dams, canals, sewers and storm drains" as an extremely or very serious problem



**76%** of voters support building a new tunnel underneath the Sacramento-San Joaquin Delta to upgrade California's primary water delivery infrastructure

