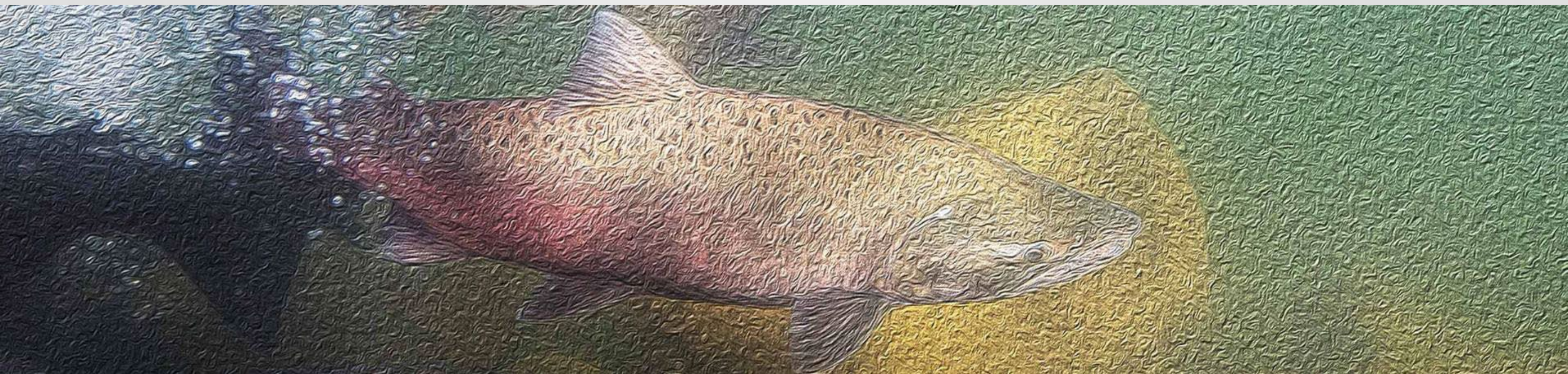


Little Egbert Multi-Benefit Project

Recreation



Agenda

- Project Overview and Goals
 - Feasibility Study Alternatives
 - Preliminary CEQA Alternatives being Considered
- Recreation Study Details of Interest
- Refining the Ranking Criteria
- Discussion (Menti!)





Delta Smelt



Longfin Smelt



Salmonids



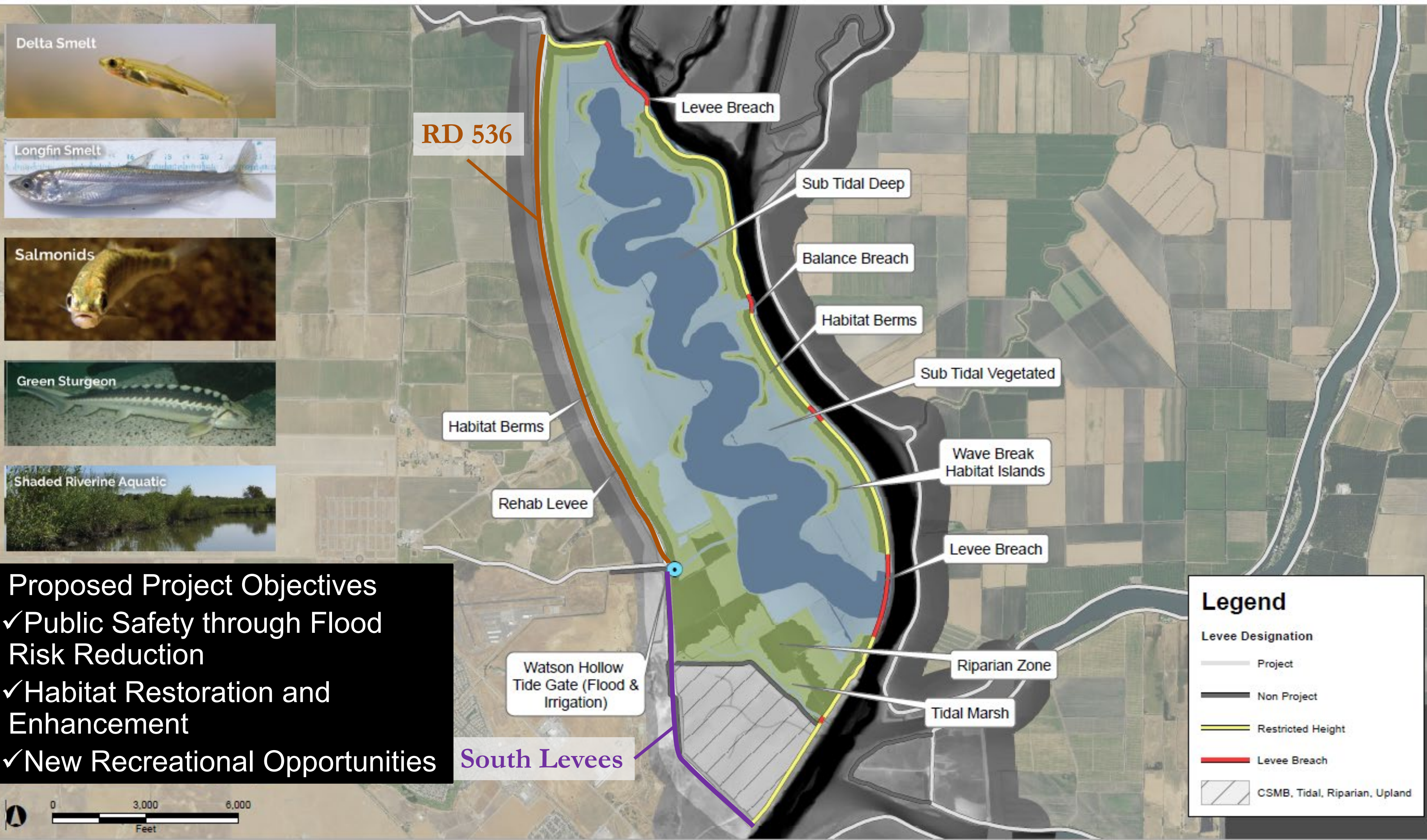
Green Sturgeon



Shaded Riverine Aquatic

Proposed Project Objectives

- ✓ Public Safety through Flood Risk Reduction
- ✓ Habitat Restoration and Enhancement
- ✓ New Recreational Opportunities



Legend

Levee Designation

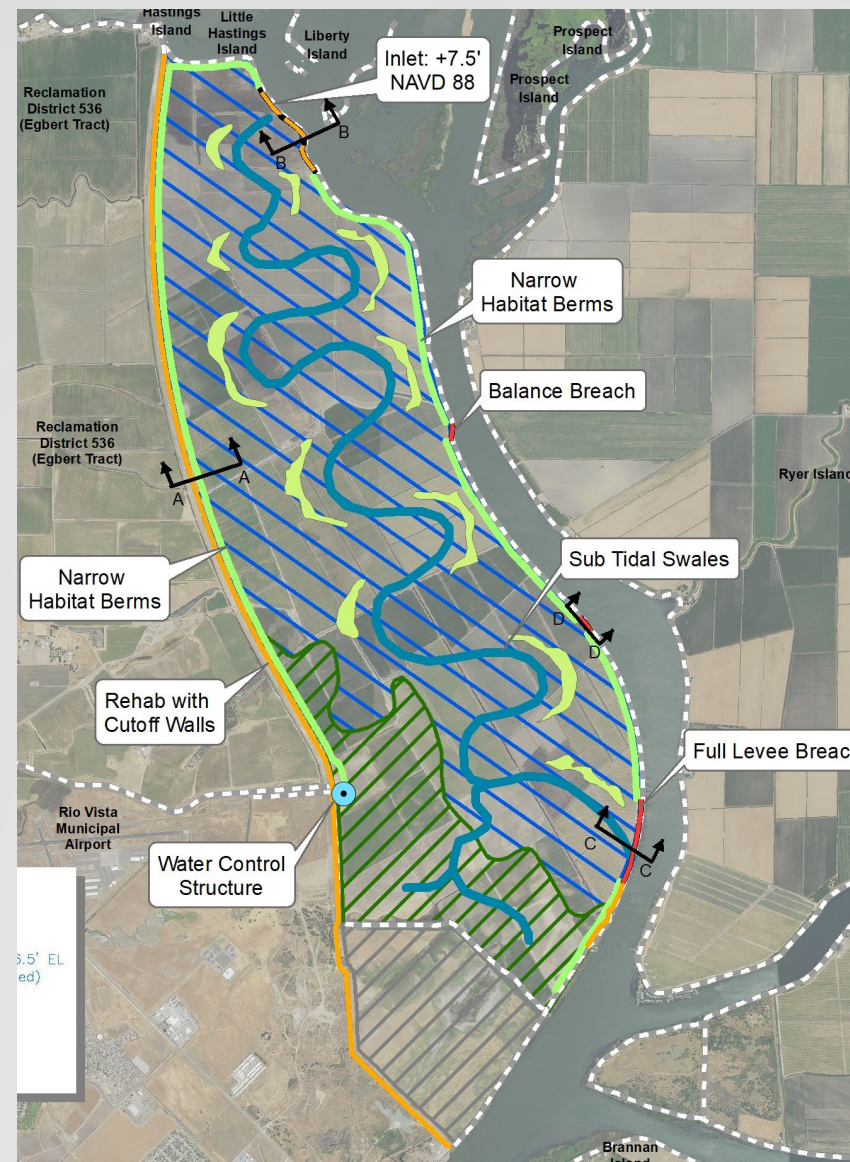
- Project
- Non Project
- Restricted Height
- Levee Breach
- CSMB, Tidal, Riparian, Upland

Quick Recap: Feasibility Study





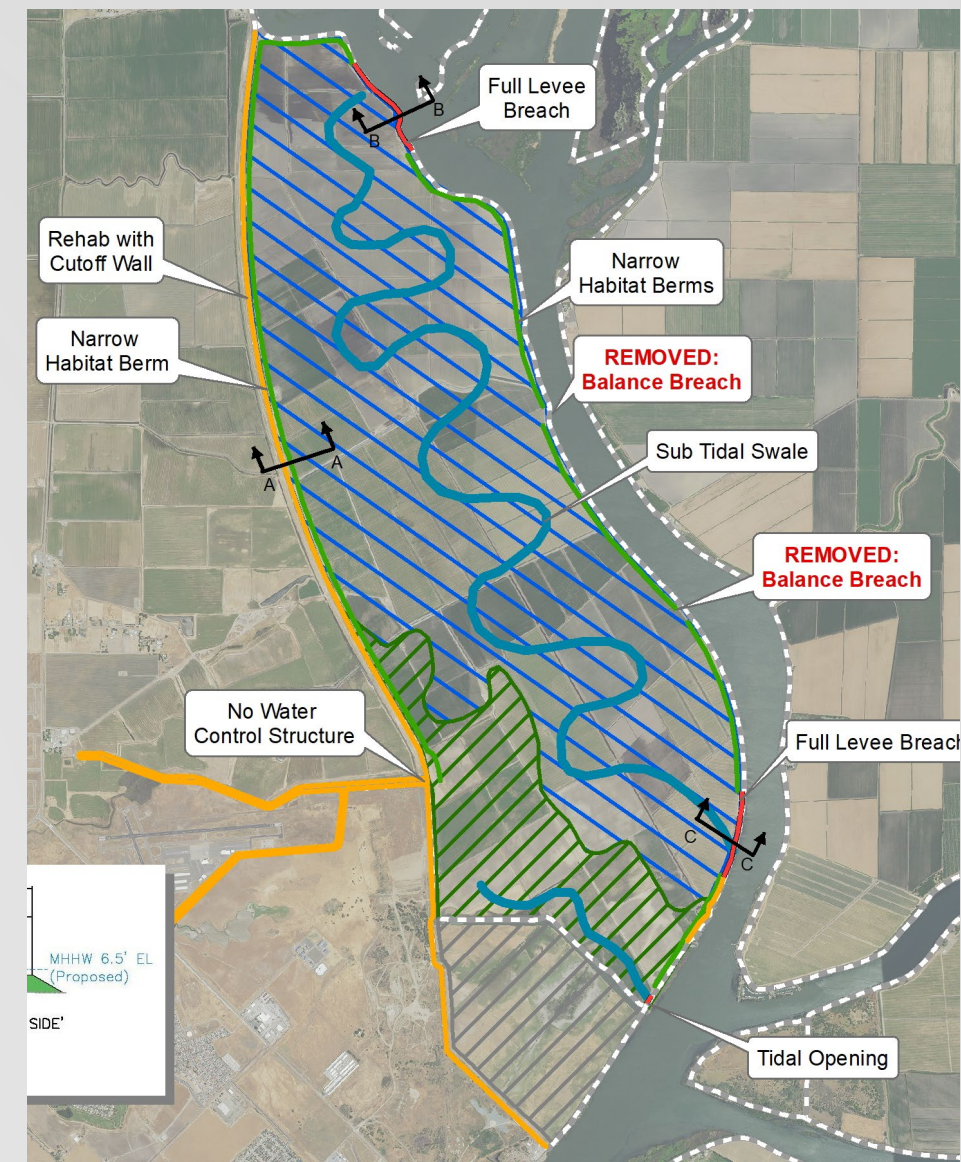
Revised Alternative 17



Revised Alternative 19



Revised Alternative 24

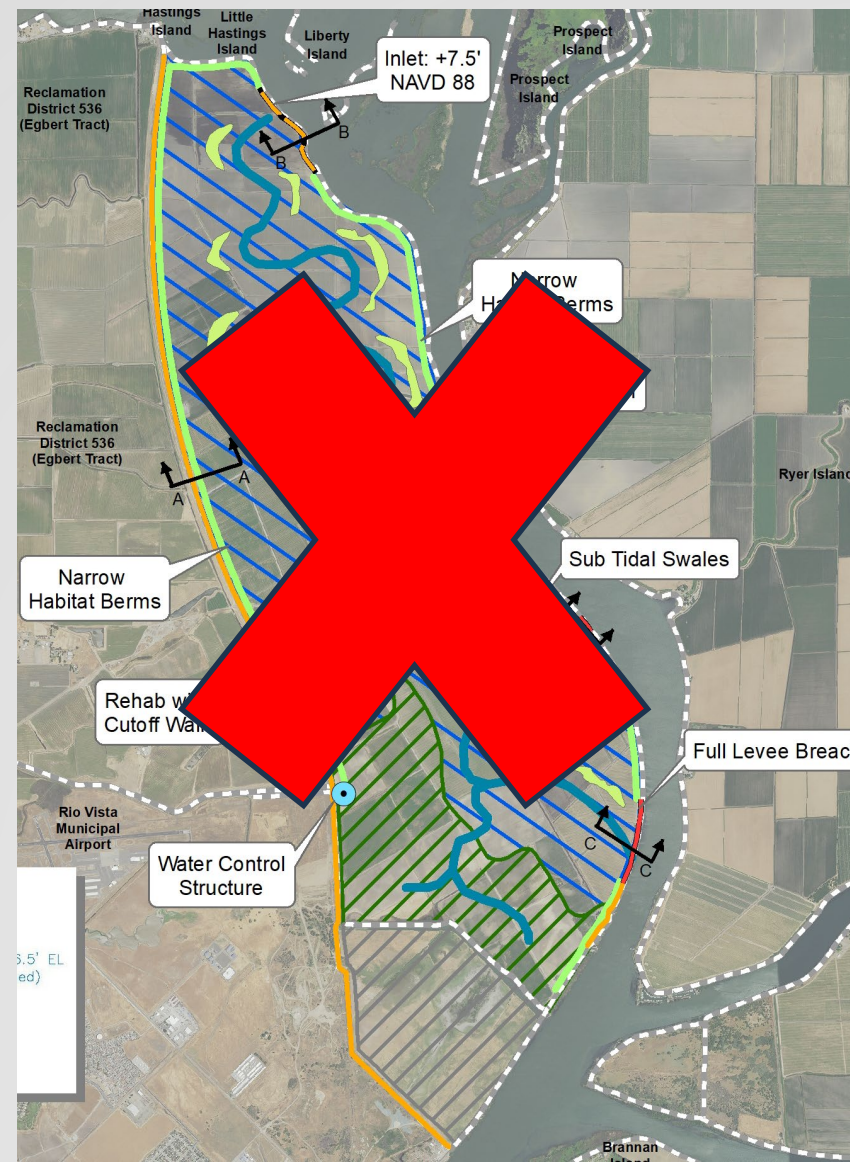


Revised Alternative 26

Feasibility Study Alternative #	North Breach	South Breach	Levee Repair	Tide Gate Structure	Balance Breaches	Habitat Berms	Sub-tidal Channel	Habitat Islands	South-Marsh Connection
17	Full Degrade to -4.0	Full Degrade to -10.0	Yes	Yes	Yes	Wide	Wide	Yes	Cache Slough via Bridge
19	to 7.5'	Full Degrade to -10.0	Yes	Yes	Yes	Narrow	-	Yes	LET Internal
24	to 7.5'	to 7.5' with notch	Yes	Yes	No	Wide	Wide	Yes	LET Internal
26	Full Degrade to -4.0	Full Degrade to -10.0	Yes	No	No	Narrow	Narrow	No	Cache Slough via Bridge



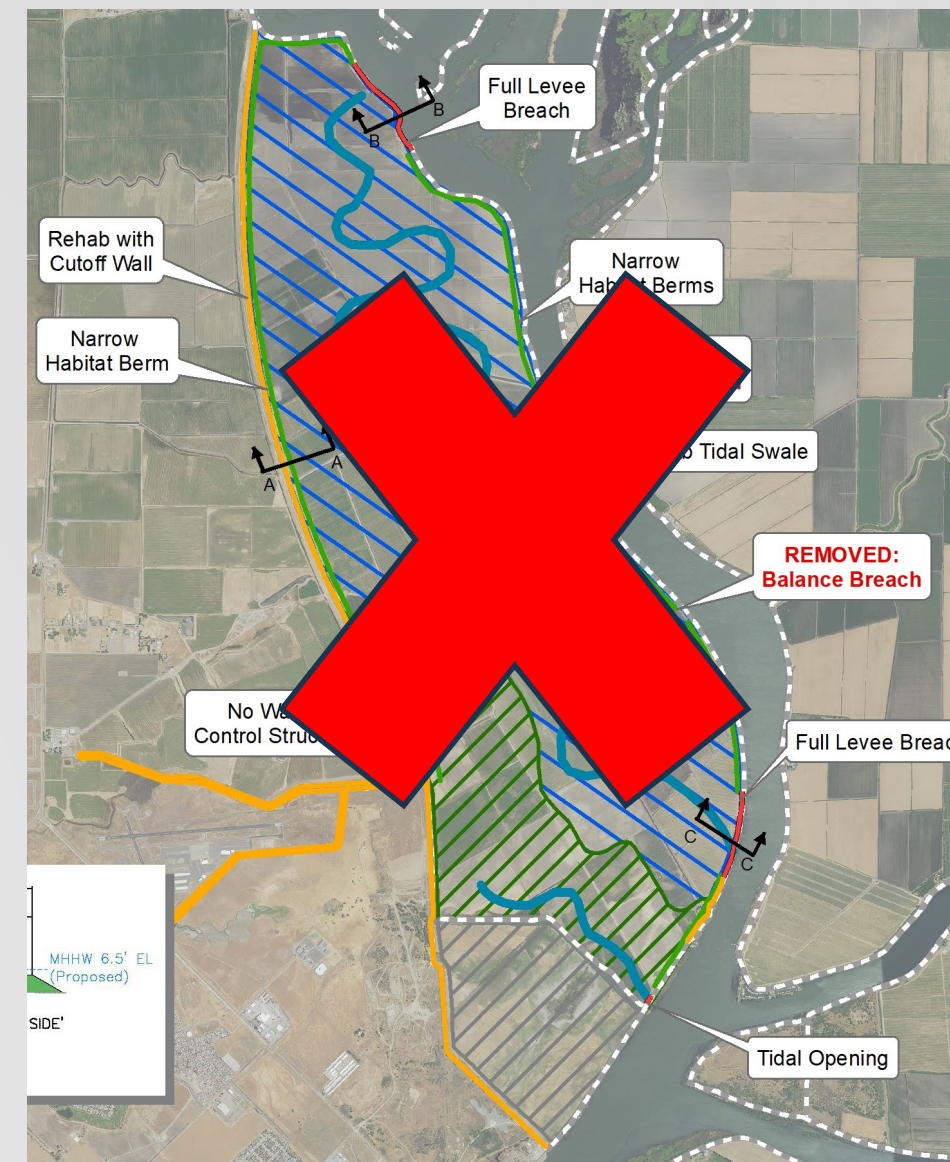
Revised Alternative 17



Revised Alternative 19



Revised Alternative 24



Revised Alternative 26

Feasibility Study Alternative #	North Breach	South Breach	Levee Repair	Tide Gate Structure	Balance Breaches	Habitat Berms	Sub-tidal Channel	Habitat Islands	South-Marsh Connection
17	Full Degrade to -4.0	Full Degrade to -10.0	Yes	Yes	Yes	Wide	Wide	Yes	Cache Slough via Bridge
19	to 7.5'	Full Degrade to -10.0	Yes	Yes	Yes	Narrow	-	Yes	LET Internal
24	to 7.5'	to 7.5' with notch	Yes	Yes	No	Wide	Wide	Yes	LET Internal
26	Full Degrade to -4.0	Full Degrade to -10.0	Yes	No	No	Narrow	Narrow	No	Cache Slough via Bridge

**California
Environmental
Quality
Act
(CEQA)**

**Preliminary Alternatives
being considered**



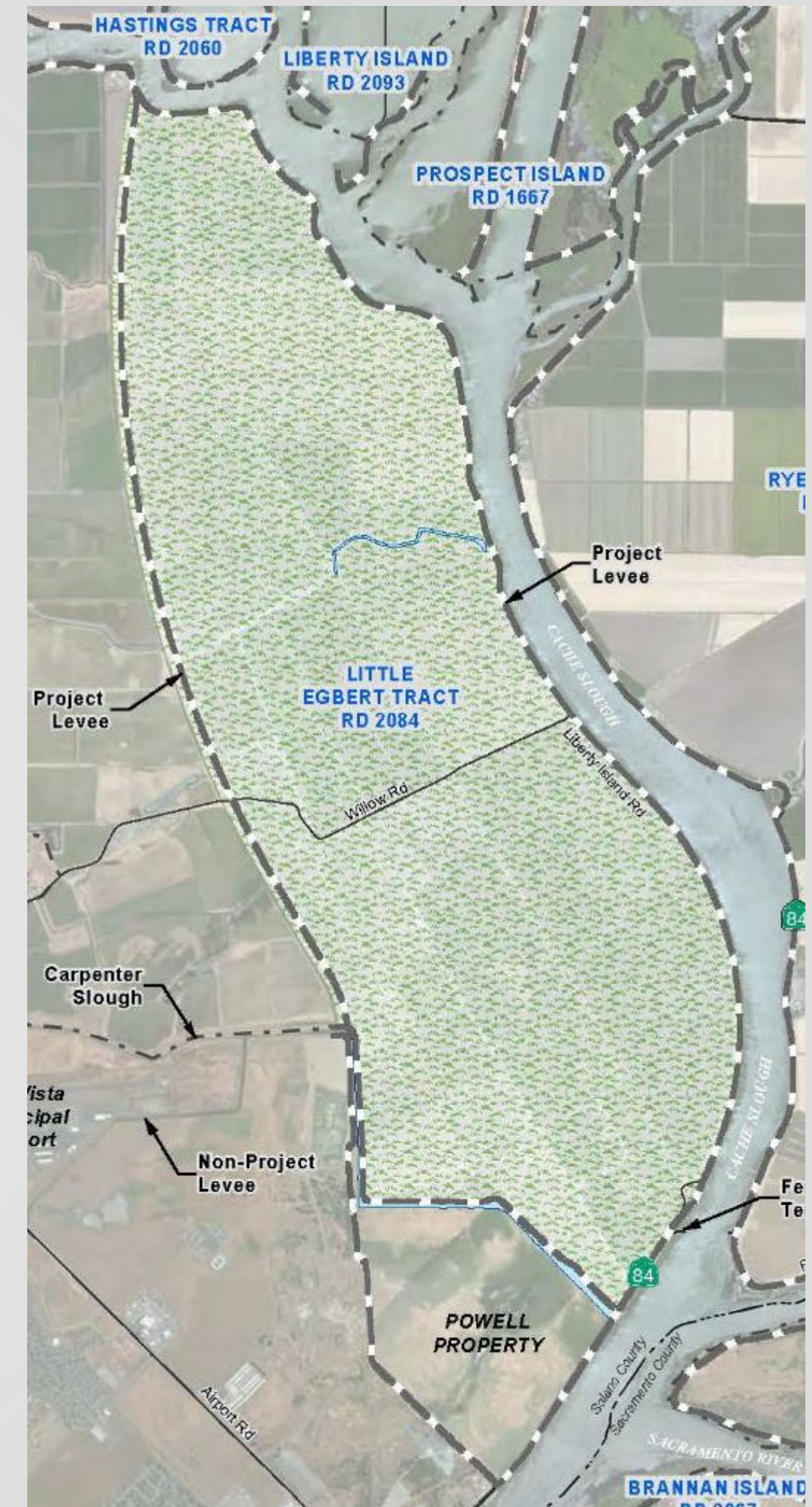
No Action Alternatives

Current Conditions

- Restricted height levee still in place
- Tract maintains current land use with same crop restrictions and threat of inundation from flood events

Future Without Project (FWOP)

- Restricted height levee no longer in place
- Tract taken over by nature with next >25-yr flood event (ie, another Liberty Island situation)





Revised Alternative 17



Revised Alternative 24



Alternative 30



Alternative 31

Alternative #	North Breach Elevation and Type	North Breach Length	Balance Breaches?	South Breach Elevation and Type	South Breach Length	South Tidal Connection	Bridge Req	Habitat Berms	Habitat Islands	Subtidal Channel
17	-4ft Elev, Full	2500 ft	yes -4ft Elev	-10ft Elev, Full	2000 ft	Cache Slough LET	Yes No	230 ft	yes	Wide
24	7.5ft Elev, Full	2500 ft	no	7.5ft Elev, Compound -4ft Elev	2000 ft	LET	No	230 ft	yes	Wide
30	2500 ft at -4 ft ELEV, additional 1800ft to the west at 6ft ELEV	4300 ft	no	7.5ft Elev, Compound -4ft Elev (double width of key)	2000 ft	LET	No	200 ft	yes	Wide
31	2500 ft at 2ft ELEV, additional 1800ft to the west at 6ft ELEV	4300 ft	no	-10ft Elev, Full	2000 ft	LET	No	200 ft	yes	Wide

Recreation Study



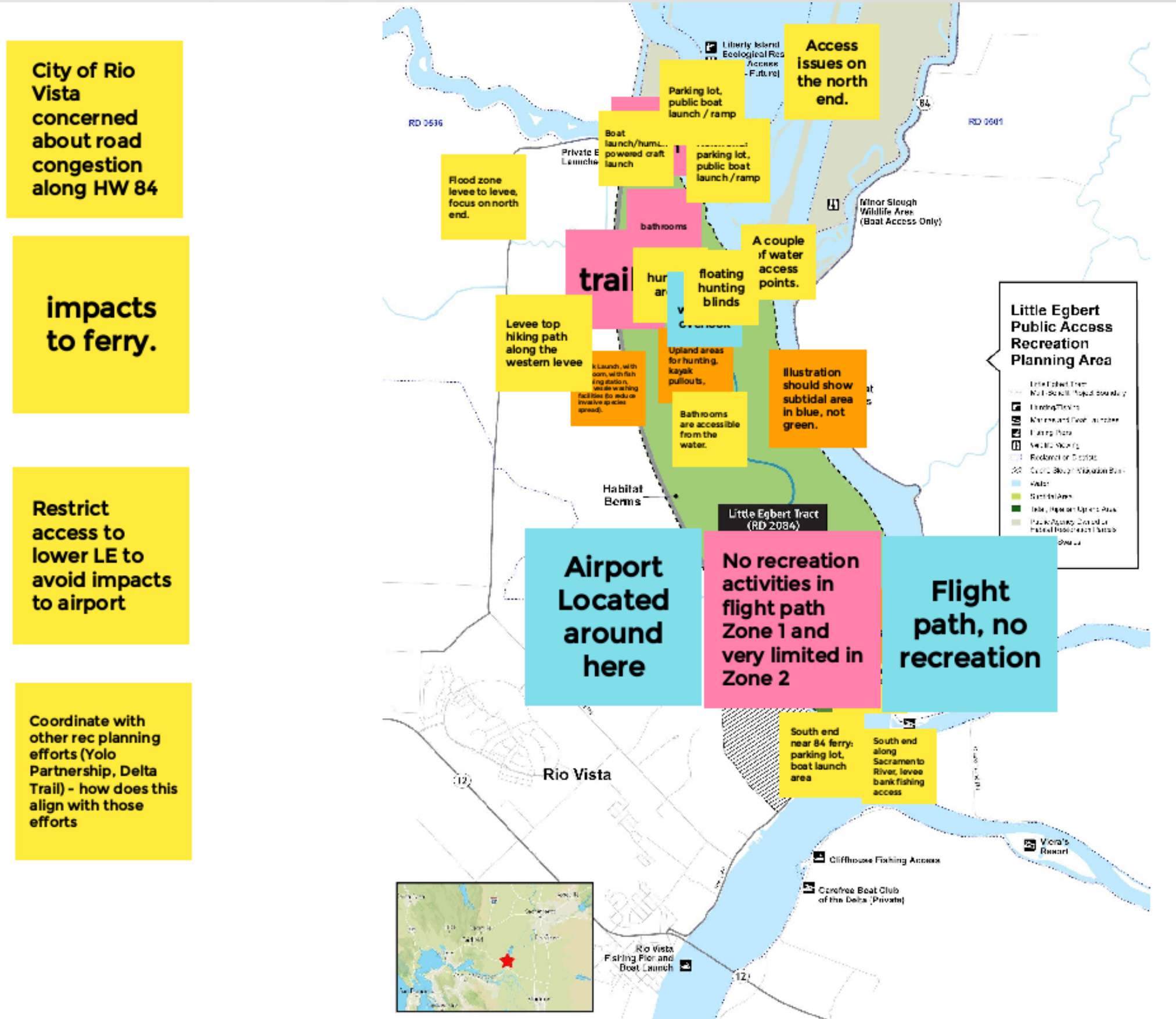
Desktop Research Documents

- City of Rio Vista General Plan, 2001
- Solano County General Plan, 2008
- Central Valley Vision Implementation Plan (CA State Parks), 2009
- Recreation Proposal for the Sacramento-San Joaquin Delta and Suisun Marsh (CA State Parks) 2011
- Inventory of Recreation Facilities in Sacramento-San Joaquin Delta (DPC), 2015
- Suisun Marsh Public Access Study (DWR), 2018
- Recreation and Tourism in the Delta (DPC), 2019
- Economic Sustainability Plan for the Sacramento–San Joaquin Delta, Recreation and Tourism Chapter 2020 Update (DPC), 2021
- Great California Delta Trail Master Plan (DPC), 2022
- Rio Vista Airport Land Use Compatibility Plan (Solano County ALUC), 2018



Recreation Outreach Efforts

- Initial Outreach to 14 groups (20 individuals)
- Focus Group Meeting
- Tribal Meeting



Recreation Outreach Efforts

Two pop-up events occurred at two different locations in Rio Vista on the weekends in Spring 2023.



Feedback from Pop-Up Events

Future Recreation Uses and Needs Identified included:

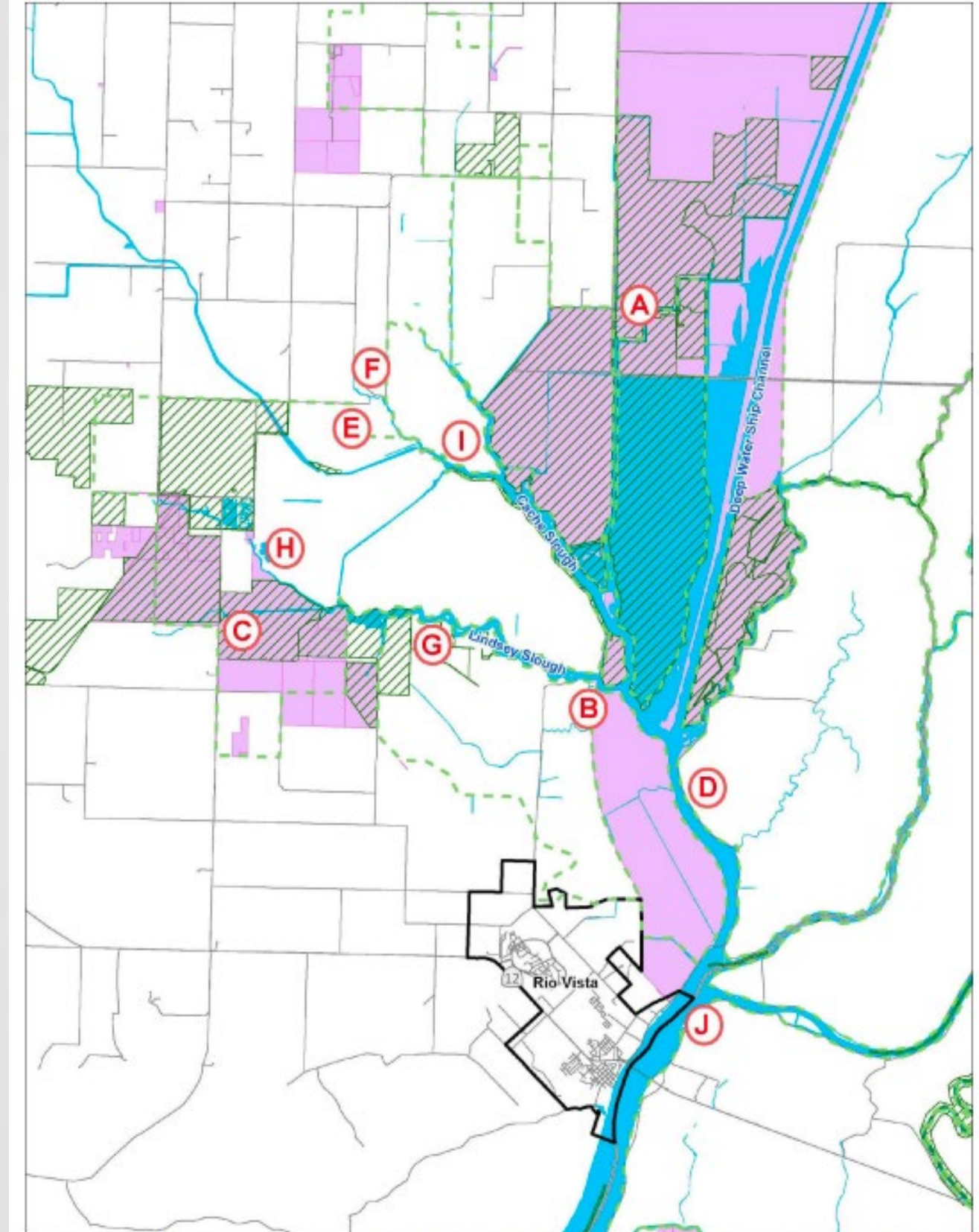
- Public amenities, such as a children's play structure, picnic tables, accessible sandbanks, restrooms with running water, picnic tables, grills in that area, and areas with running water to clean fish.
- Widening the canal to make it more accessible for power boats and kayaks.
- Recommendations were made for the project proponents to partner with local recreational organizations (for example, the duck-watching club of Rio Vista and other birdwatching organizations/clubs.)
- A recommendation was made to team up with local schools to conduct educational activities.
- Areas for camping.



Cache Slough Public Access Recreation Plan

- Partnership between CDFW, DWR, and Solano County
- Interested Party Outreach
- Map ID B – Lindsey Slough Boat Launch (on or near Little Egbert Tract)

Figure 4-1. Public Access Recreation Options Map



Sources: California Department of Technology 2023, ESRI et al. 2023, San Francisco Estuary Institute 2023, Solano County 2023.



**And all of the feedback leads us
to....**



Recreation – South End Concepts

LITTLE EGBERT MULTI-BENEFIT PROJECT DESIGN CONCEPT 1A

CNRA ALTERNATIVE 17

CONCEPT FEATURES INCLUDE:

- Pedestrian trails in upland elevations
- Loop trails of varying distances
- Access road and trail routes take advantage of existing and proposed topographic features to remain above tidal influx
- Multiple parking and trailhead options
- Boardwalk trail at edge of tidal basin

LEGEND

- A. Parking Area with trailhead and interpretive signage
- B. Access "spine" utilizing unpaved road (existing)
- C. Loop trails (above +6.5 elevation)
- D. Boardwalk
- E. Boat access for small nonmotorized vehicles

- Pedestrian/bike Trail
- Access road ("spine")
- Boardwalk
- 🚗 Parking area
- 🚣 Boat access (small nonmotorized, kayak, canoe)



LITTLE EGBERT MULTI-BENEFIT PROJECT DESIGN CONCEPT 1B

LEMBP ALTERNATIVE 24

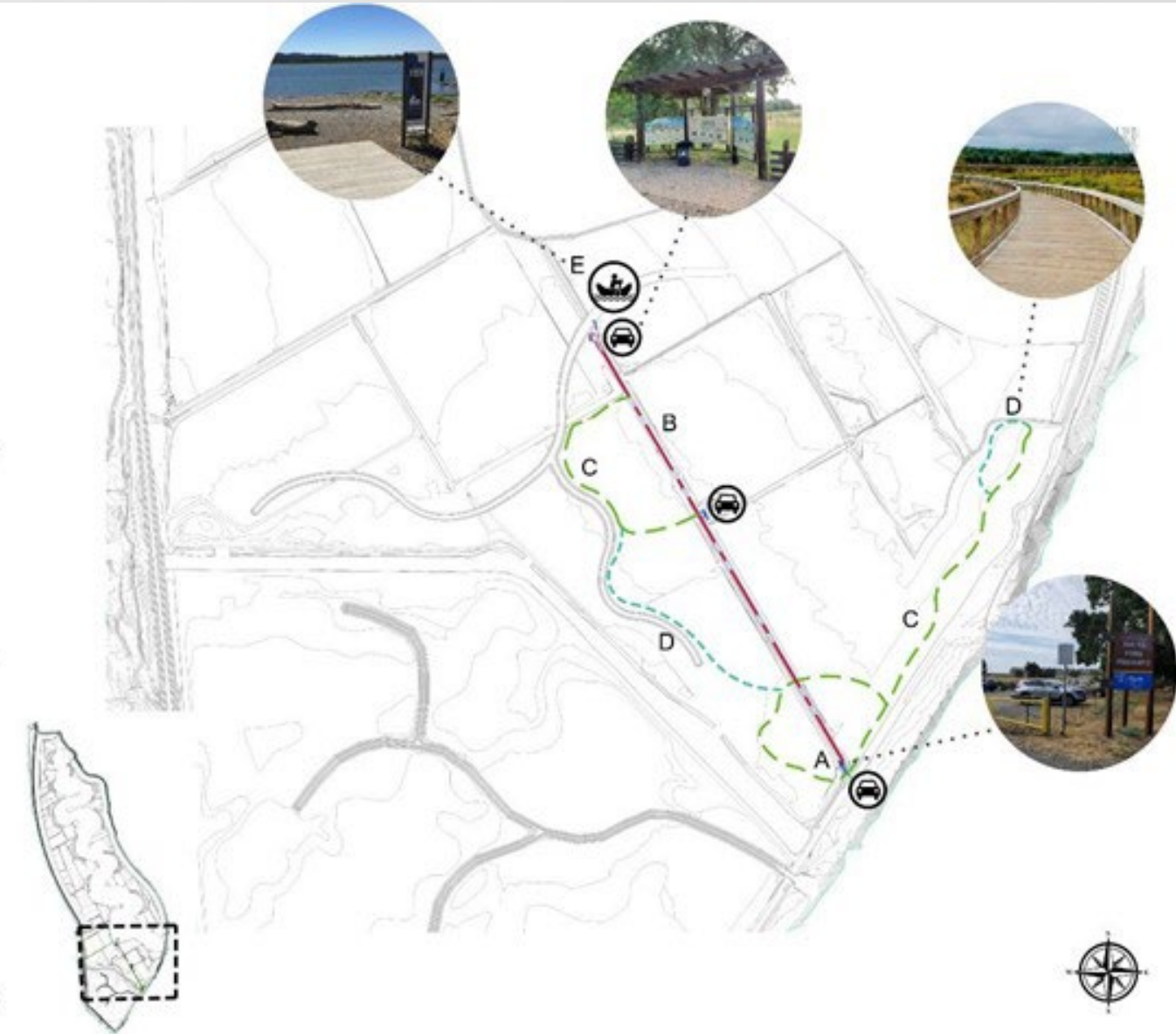
CONCEPT FEATURES INCLUDE:

- Pedestrian trails in upland elevations
- Loop trails of varying distances
- Access road and trail routes take advantage of existing and proposed topographic features to remain above tidal influx
- Multiple parking and trailhead options
- Boardwalk trails connecting to pedestrian trails

LEGEND

- A. Parking Area with Trailhead and Interpretive Signage
- B. Access "spine" utilizing unpaved road (existing)
- C. Loop Trails
- D. Boardwalk Trail
- E. Boat Access for Small Non-Motorized Vehicles

- Pedestrian/Bike Trail
- Access Road ("Spine")
- Boardwalk
- 🚗 Parking Area
- 🚣 Boat Access (Small Non-Motorized, Kayak, Canoe)



Recreation – North End and Habitat Berm Trail Concepts

LITTLE EGBERT MULTI-BENEFIT PROJECT DESIGN CONCEPT 2

CNRA ALTERNATIVE 24

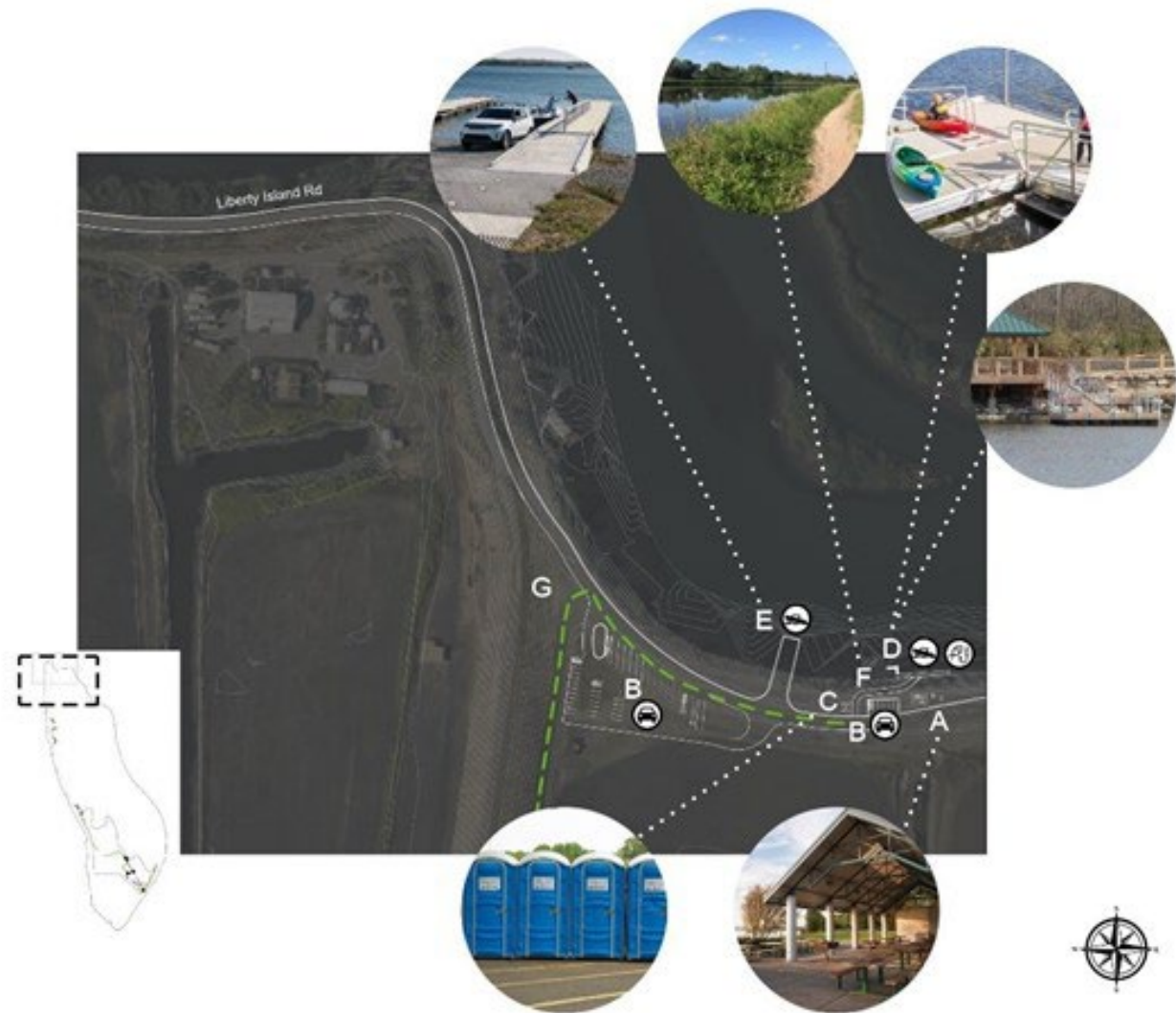
CONCEPT FEATURES INCLUDE:

- Boat launches
- Fishing dock
- Accessible parking for vehicles and trailers
- Restrooms
- Shade pavilion with picnic tables
- Connection to the southern pedestrian and bike trail

LEGEND

- A. Shade pavilion and picnic tables
- B. Parking area
- C. Restrooms
- D. Fishing dock and small boat launch
- E. Boat launch
- F. Accessible path to fishing dock and small boat launch
- G. Pedestrian/bike trail from southern area of tract

- Pedestrian/bike trail
- ⊞ Parking area
- ⊞ Boat launch
- ⊞ Fishing dock



LITTLE EGBERT MULTI-BENEFIT PROJECT DESIGN CONCEPT 3

CNRA ALTERNATIVE 24

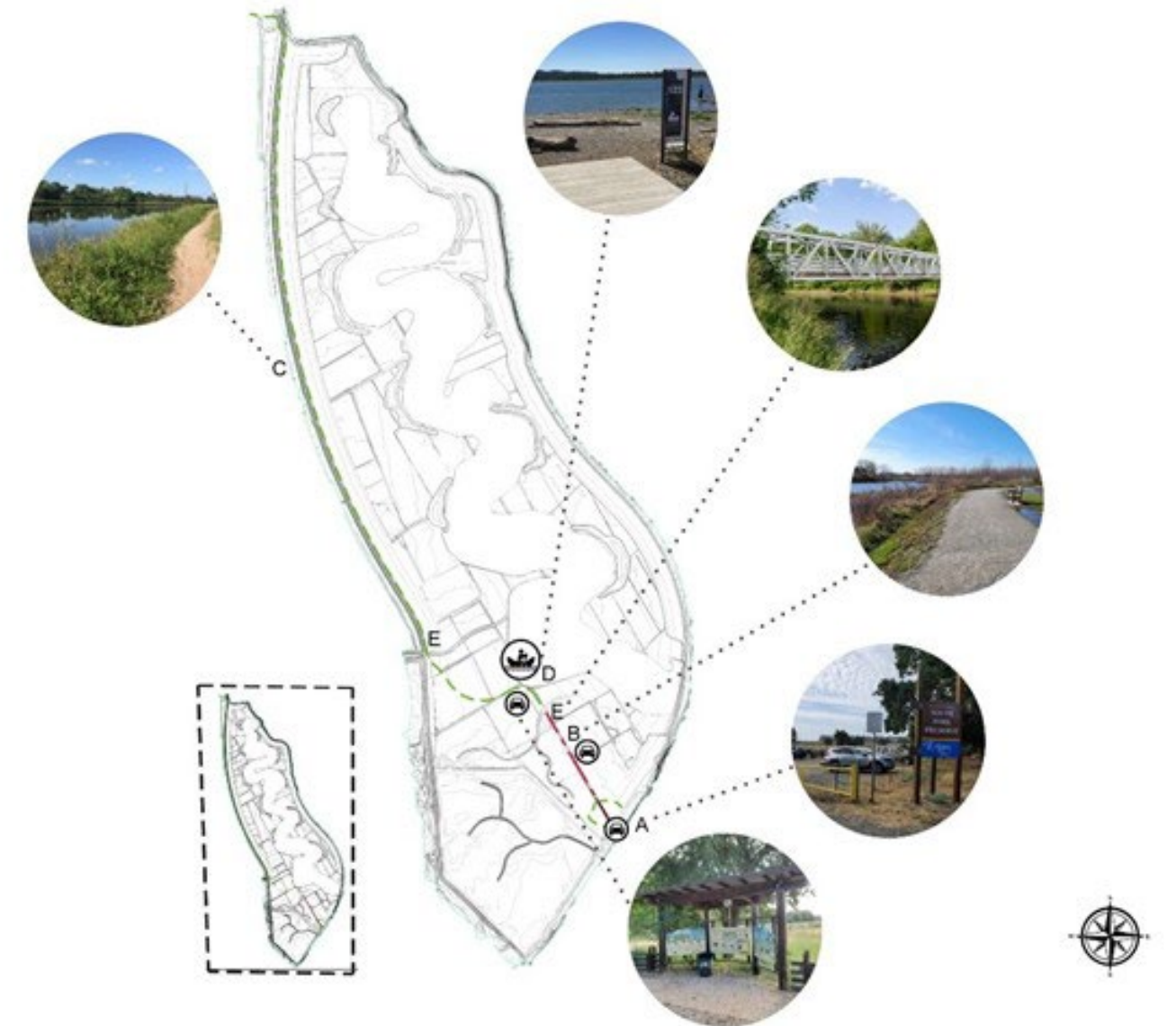
CONCEPT FEATURES INCLUDE:

- Provides extensive walking and biking recreation experience connecting north and south of Little Egbert Tract
- Access road and trail routes take advantage of existing and proposed topographic features to remain above tidal influx
- Multiple parking and trailhead options

LEGEND

- A. Parking area with trailhead and interpretive signage
- B. Access "spine" utilizing unpaved road (existing)
- C. Long trail feature
- D. Boat access for small nonmotorized vehicles
- E. Pedestrian bridge over the tidal swale channel

- Pedestrian/bike trail
- Access road ("spine")
- ⊞ Parking area
- ⊞ Boat access (small nonmotorized, kayak, canoe)



THANK YOU!

Contact us:

- Questions? Reach Morgan, Lori, and/or Megan by emailing:
LittleEgbertMBP@water.ca.gov
- Visit our website at:
water.ca.gov/littleegbert

For more information on the Feasibility Study, visit the Little Egbert Joint Powers Agency at lejpa.org.

