



Natural Resources Conservation Service  
2 Sutter Street Suite, D  
Red Bluff, CA 96080  
Phone (530) 527-3013 Ext 112  
Fax (530) 5277451

Larry Branham  
District Conservationist  
Email [larry.branham@ca.usda.gov](mailto:larry.branham@ca.usda.gov)

## Helping People Help the Land

---

May 21, 2014

Subject: Kopta Slough Project

To: US Army Corp of Engineers

Enclosed is the completed Farmland Conversion Impact Rating form AD-1006.

The area delineated on the project area photo has been determined to be prime farmland (186 acres).

Map unit Columbia complex, channeled (Cu) in a natural state does not meet prime farmland criteria having a land capability unit of Vlw-1 meaning it is subject to flooding. It has however been altered (leveled and filled) to accommodate flood irrigation, reducing the flooding frequency.

Review of aerial photos does not appear to show any difference between any of the mapping units in the field.

The Storie rating has been prorated for the 3 mapping units.

Please do not hesitate to contact me in you have any questions.

Thanks you.

Respectfully,

A handwritten signature in blue ink that reads "Larry Branham".

Larry Branham  
District Specialist

**FARMLAND CONVERSION IMPACT RATING**

<b>PART I (To be completed by Federal Agency)</b>		Date Of Land Evaluation Request 4/17/14			
Name of Project Kopta Slough Flood Damage Reduction and Habitat Restoration Project		Federal Agency Involved U.S. Army Corps of Engineers, Sacramento District			
Proposed Land Use Ecological and Floodplain Restoration		County and State Tehama County, California			
<b>PART II (To be completed by NRCS)</b>		Date Request Received By NRCS			
Does the site contain prime, unique, statewide or local important farmland? <i>(If no, the FPPA does not apply - do not complete additional parts of this form)</i>		YES <input checked="" type="checkbox"/>	NO <input type="checkbox"/>	Acres Irrigated 76,081	Average Farm Size 304
Major Crop(s) Walnuts, Almonds, Prunes	Farmable Land In Govt. Jurisdiction Acres: 92,214 % 5.0	Amount of Farmland As Defined in FPPA Acres: 231,513 % 12.3			
Name of Land Evaluation System Used Storie	Name of State or Local Site Assessment System -	Date Land Evaluation Returned by NRCS 5-22-14			
<b>PART III (To be completed by Federal Agency)</b>		Alternative Site Rating			
		Site A	Site B	Site C	Site D
A. Total Acres To Be Converted Directly		176			
B. Total Acres To Be Converted Indirectly		0			
C. Total Acres In Site		176			
<b>PART IV (To be completed by NRCS) Land Evaluation Information</b>					
A. Total Acres Prime And Unique Farmland		176			
B. Total Acres Statewide Important or Local Important Farmland		0			
C. Percentage Of Farmland In County Or Local Govt. Unit To Be Converted		0.0018			
D. Percentage Of Farmland in Govt. Jurisdiction With Same Or Higher Relative Value		-			
<b>PART V (To be completed by NRCS) Land Evaluation Criterion</b> Relative Value of Farmland To Be Converted (Scale of 0 to 100 Points)		85			
<b>PART VI (To be completed by Federal Agency) Site Assessment Criteria</b> <i>(Criteria are explained in 7 CFR 658.5 b. For Corridor project use form NRCS-CPA-106)</i>		Maximum Points	Site A	Site B	Site C
1. Area In Non-urban Use		(15)			
2. Perimeter In Non-urban Use		(10)			
3. Percent Of Site Being Farmed		(20)			
4. Protection Provided By State and Local Government		(20)			
5. Distance From Urban Built-up Area		(15)			
6. Distance To Urban Support Services		(15)			
7. Size Of Present Fam Unit Compared To Average		(10)			
8. Creation Of Non-farmable Farmland		(10)			
9. Availability Of Farm Support Services		(5)			
10. On-Farm Investments		(20)			
11. Effects Of Conversion On Farm Support Services		(10)			
12. Compatibility With Existing Agricultural Use		(10)			
TOTAL SITE ASSESSMENT POINTS		160			
<b>PART VII (To be completed by Federal Agency)</b>					
Relative Value Of Farmland (From Part V)		100			
Total Site Assessment (From Part VI above or local site assessment)		160			
<b>TOTAL POINTS (Total of above 2 lines)</b>		260			
Site Selected:	Date Of Selection	Was A Local Site Assessment Used? YES <input type="checkbox"/> NO <input type="checkbox"/>			
Reason For Selection:					
Name of Federal agency representative completing this form:					Date:

Soil Map—Tehama County, California  
(Kopta Slough Project Area)

122° 5' 53" W

122° 5' 7" W

39° 56' 59" N

39° 56' 59" N



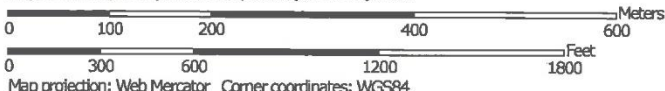
39° 56' 12" N

39° 56' 12" N

122° 5' 53" W



Map Scale: 1:6,990 if printed on A portrait (8.5" x 11") sheet.



Map projection: Web Mercator Corner coordinates: WGS84

122° 5' 7" W



Natural Resources  
Conservation Service

Web Soil Survey  
National Cooperative Soil Survey

5/21/2014  
Page 1 of 3

## Map Unit Legend

### Tehama County, California (CA645)

Map Unit Symbol	Map Unit Name	Acres in AOI	Percent of AOI
CmA	Columbia fine sandy loam, 0 to 3 percent slopes	28.9	16.4%
CsA	Columbia silt loam, 0 to 3 percent slops	116.1	66.1%
Cu	Columbia complex, channeled	30.7	17.5%
<b>Totals for Area of Interest</b>		<b>175.7</b>	<b>100.0%</b>



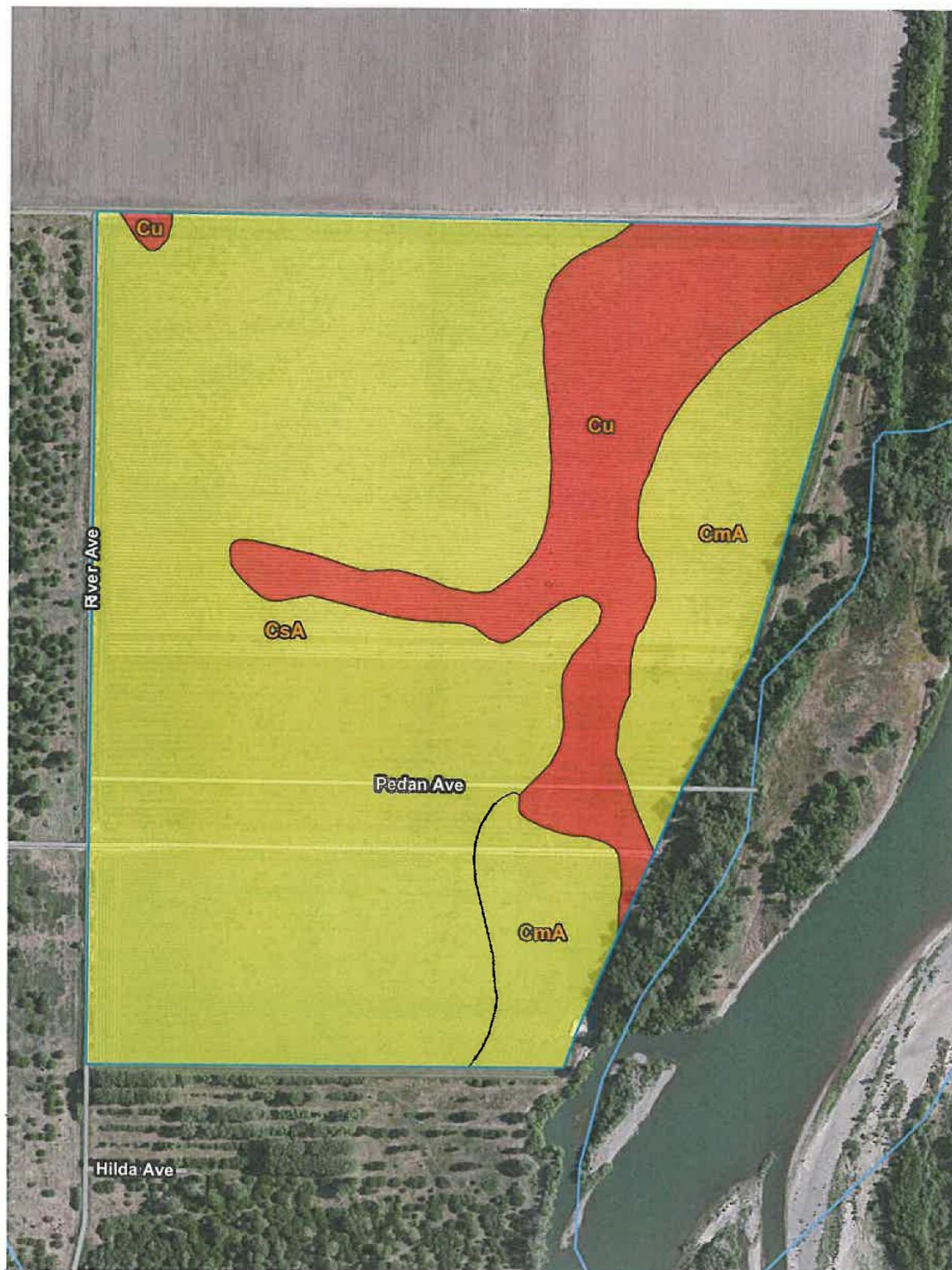
Farmland Classification—Tehama County, California  
(Kopta Slough Project Area)

122° 5' 55" W

122° 5' 7" W

39° 56' 59" N

39° 56' 59" N



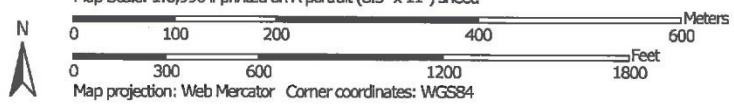
39° 56' 12" N

39° 56' 12" N

122° 5' 55" W

122° 5' 7" W

Map Scale: 1:6,990 if printed on A portrait (8.5" x 11") sheet.



## Farmland Classification

### Farmland Classification — Summary by Map Unit — Tehama County, California (CA645)

Map Unit Symbol	Map Unit Name	Rating	Acres in AOI	Percent of AOI
CmA	Columbia fine sandy loam, 0 to 3 percent slopes	Prime farmland if irrigated	28.9	16.4%
CsA	Columbia silt loam, 0 to 3 percent slops	Prime farmland if irrigated	116.1	66.1%
Cu	Columbia complex, channeled	Not prime farmland	30.7	17.5%
<b>Totals for Area of Interest</b>			<b>175.7</b>	<b>100.0%</b>

## Description

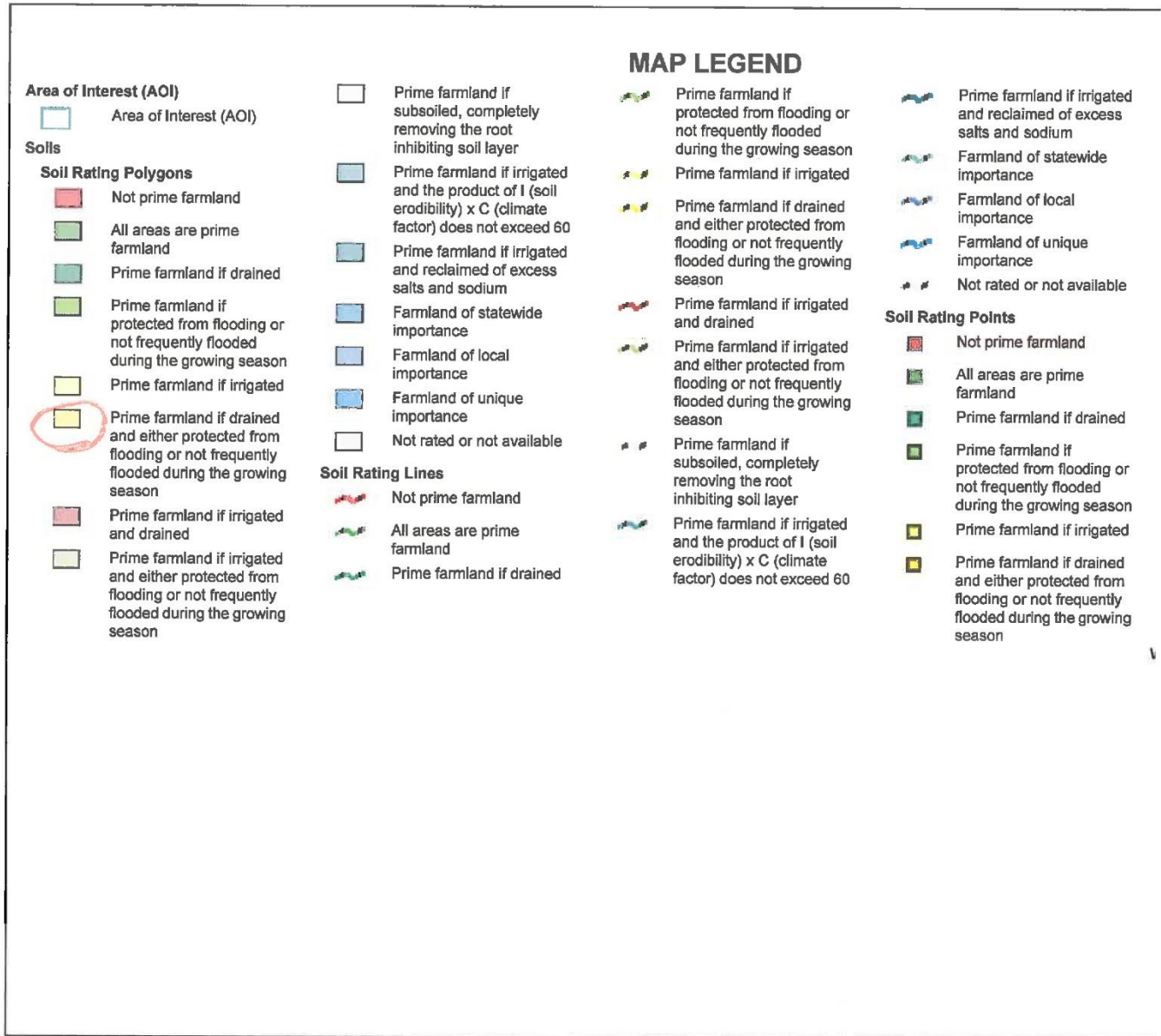
Farmland classification identifies map units as prime farmland, farmland of statewide importance, farmland of local importance, or unique farmland. It identifies the location and extent of the soils that are best suited to food, feed, fiber, forage, and oilseed crops. NRCS policy and procedures on prime and unique farmlands are published in the "Federal Register," Vol. 43, No. 21, January 31, 1978.

## Rating Options

*Aggregation Method:* No Aggregation Necessary

*Tie-breaker Rule:* Lowe

Farmland Classification—Tehama County, California  
(Kopta Slough Project Area)



## Storie Index Rating (CA)

### Tehama County, California

Map Unit Symbol	Map Unit Name	Component	Storie index rating
CmA	Columbia fine sandy loam, 0 to 3 percent slopes	Columbia	100
CsA	Columbia silt loam, 0 to 3 percent slopes	Columbia	90
Cu	Columbia complex, channeled	Riverwash	8
		Columbia	54
		Columbia	54

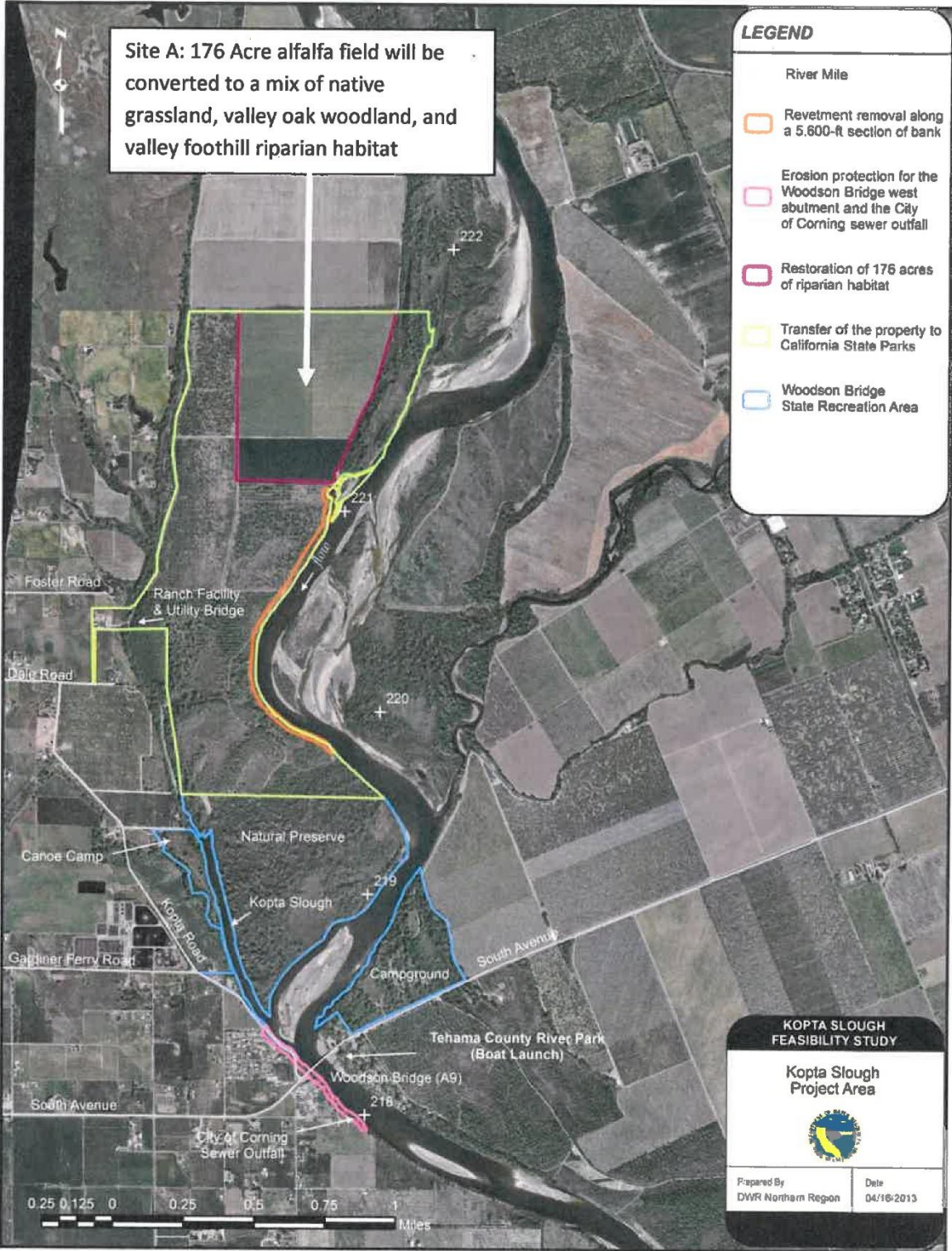




Site A: 176 Acre alfalfa field will be converted to a mix of native grassland, valley oak woodland, and valley foothill riparian habitat

**LEGEND**

- River Mile
- Revetment removal along a 5,600-ft section of bank
- Erosion protection for the Woodson Bridge west abutment and the City of Corning sewer outfall
- Restoration of 176 acres of riparian habitat
- Transfer of the property to California State Parks
- Woodson Bridge State Recreation Area



**KOPTA SLOUGH  
FEASIBILITY STUDY**

**Kopta Slough  
Project Area**



Prepared By: DWR Northern Region      Date: 04/16/2013