



Conveyance Projects Panel Discussion Regional Conveyance System Study

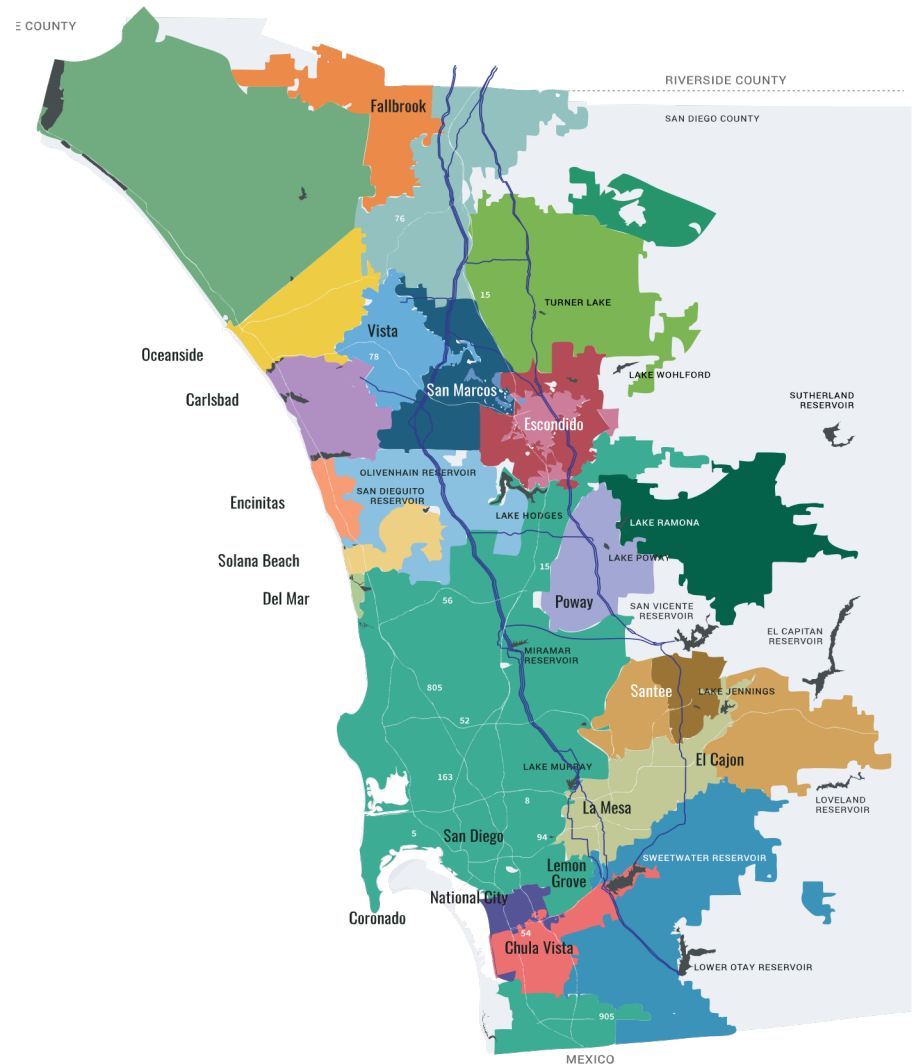
California Water Commission
November 18, 2020

Kelly Rodgers
Director of the Colorado River Program

Water Authority Serves a Vibrant Region

Wholesale agency created by the state Legislature in 1944

- Serves 3.3 million people and \$245 billion economy through 24 member agencies
- Provides about 75% of water used across the metro area
- 24 member agencies, 36-member Board



Increasing San Diego County's Water Supply Reliability through Supply Diversification

1991

28 TAF

5%

550 TAF
95%

Total = 578 TAF

2020*

80 TAF

15%

56 TAF

10%

43 TAF

8%

16 TAF

3%

33 TAF

6%

52 TAF

10%

8 TAF

2%

59 TAF

11%

Total = 537 TAF

2018

79 TAF

15%

41 TAF

8%

27 TAF

5%

22 TAF

4%

26 TAF

5%

44 TAF

9%

164 TAF

32%

115 TAF

22%

Total = 518 TAF

2035*

72 TAF

11%

57 TAF

9%

16 TAF

2%

36 TAF

6%

51 TAF

8%

80 TAF

13%

200 TAF

32%

Total = 632 TAF

10 TAF

2%

110 TAF

17%



Metropolitan Water District



Imperial Irrigation District Transfer



All American & Coachella Canal Lining



San Luis Rey Water Transfer



Recycled Water



Seawater Desalination



Groundwater



Local Surface Water



Potable Reuse

QSA Water is Lifeline for San Diego Region

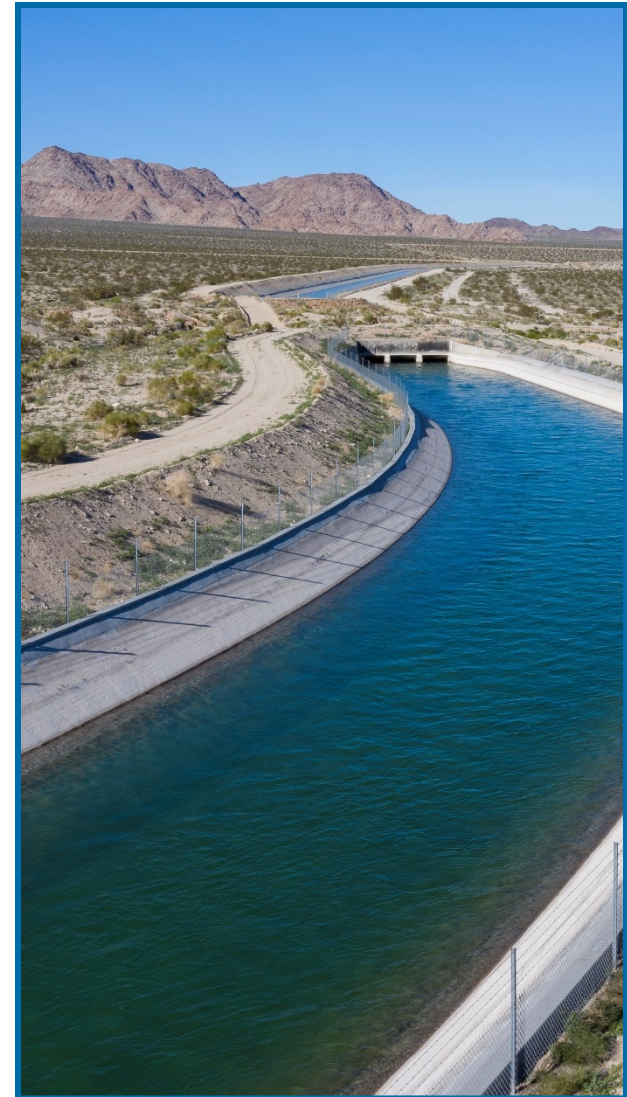
- Quantification Settlement Agreement finalized in 2003
- Promotes efficient use of Colorado River water
- Helps reduce stress on Bay Delta
- Includes conserved water transfer and canal lining supplies
 - meets 50 percent of San Diego region's demands
- Provides cost-effective and highly reliable supplies



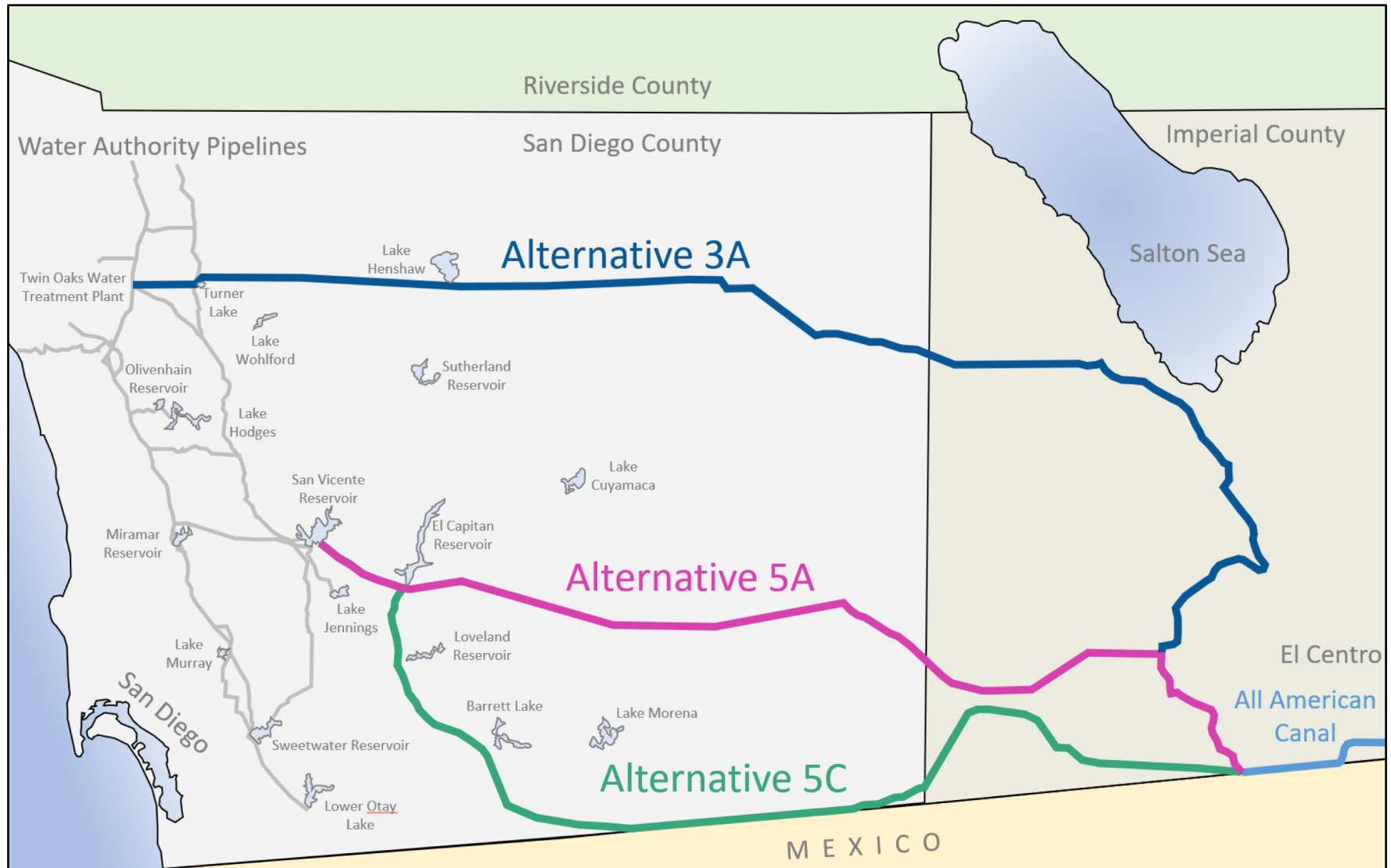
Why Study Regional Conveyance?

- Supply Decision in 2047 - Option to extend water transfer with Imperial Irrigation District
-
- Conveyance Decision in 2047 - Agreement to use Metropolitan Water District's aqueduct ends
-

Goal: Maintain water reliability, manage cost and risk uncertainty, and integrate partnerships for regional benefits



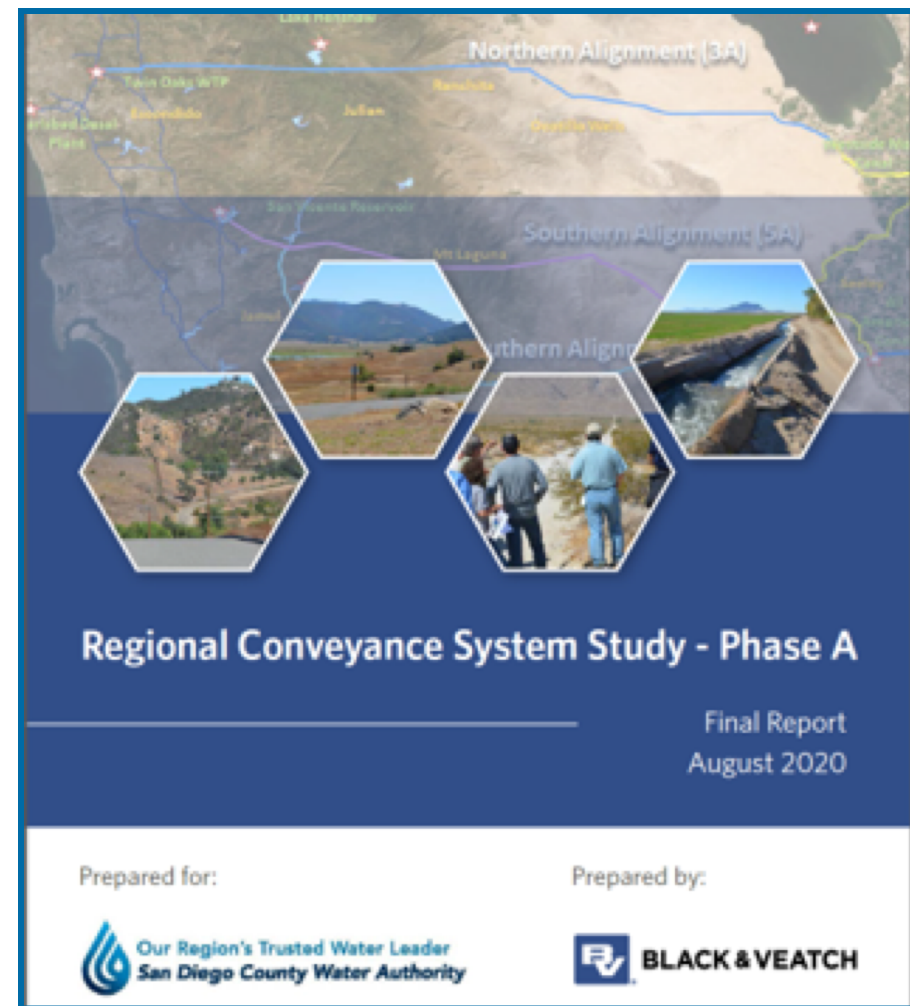
Three Routes Studied in Phase A



Phase A - Engineering and Cost

Key Findings

- QSA water is needed
- 3A, 5A, 5C - technically viable
- 3A, 5A - economically competitive
- Can be integrated into Water Authority system
- Several potential partnerships



Partnerships for Resiliency and Public Good

- Ensure cost-competitive supplies
- Add resilience through operational storage and additional facilities
- Address climate change – QSA conservation programs and renewable energy integration
- Promote Salton Sea restoration
- Engage a variety of stakeholders



Potential Habitat Projects at Salton Sea

- Project contemplates reducing salinity of QSA water
- Brine water effluent from water treatment plant
- Opportunity to create habitat at the sea
- Leverage similar mitigation project experience
- Cover exposed playa and help State implement plan



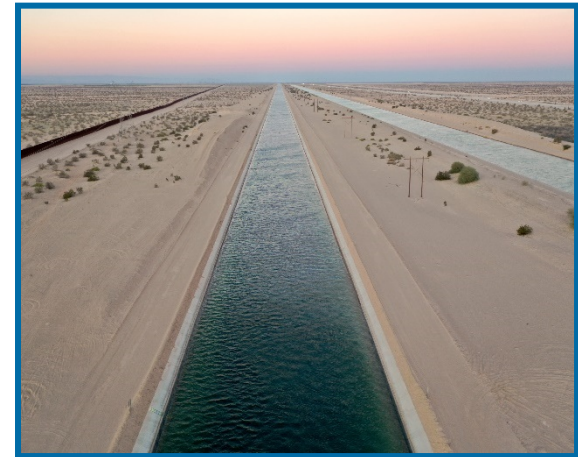
Renewable Energy Opportunities

- Integrate and generate renewable energy
- Promote geothermal development at the Salton Sea - wind and solar potential
- Support state Renewables Portfolio Standard goals



Potential for Additional Resiliency

- Additional surface and groundwater storage in San Diego region and Imperial Valley
-
- Increased resiliency to reduce risk of supply interruptions during operations, maintenance, and repair activities as well as emergencies such as storms and seismic events

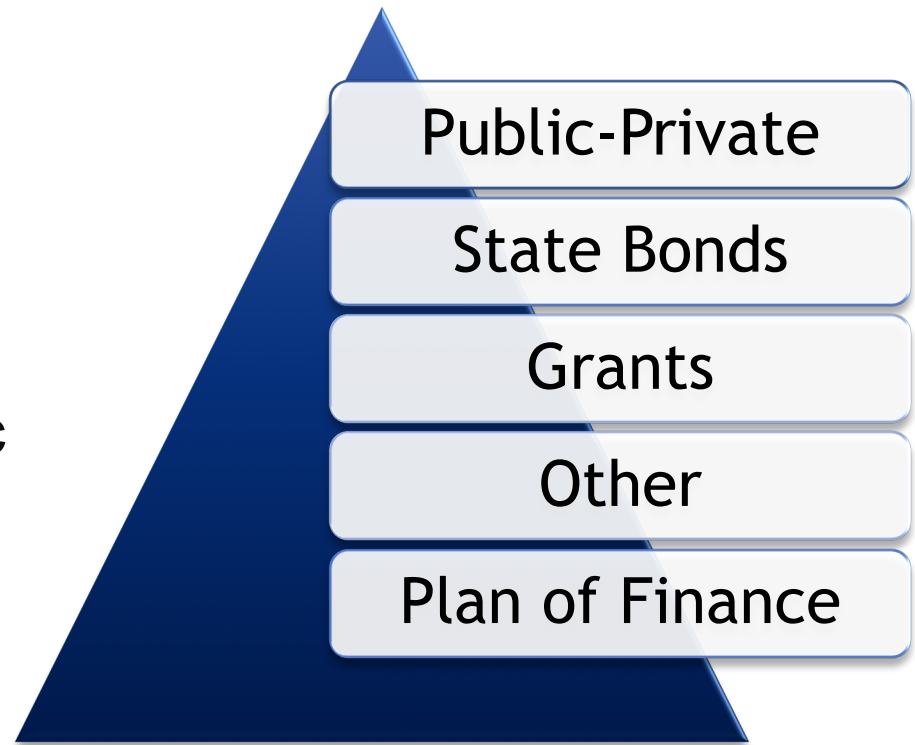


Phase B - Partnerships/ Economics/Funding

- SDCWA Board action on November 19, 2020

Phase B:

- Engage with potential partners and stakeholders
- Perform detailed economic and risk analyses
- Analyze funding strategies



Long-Term, Flexible, Integrated Planning

