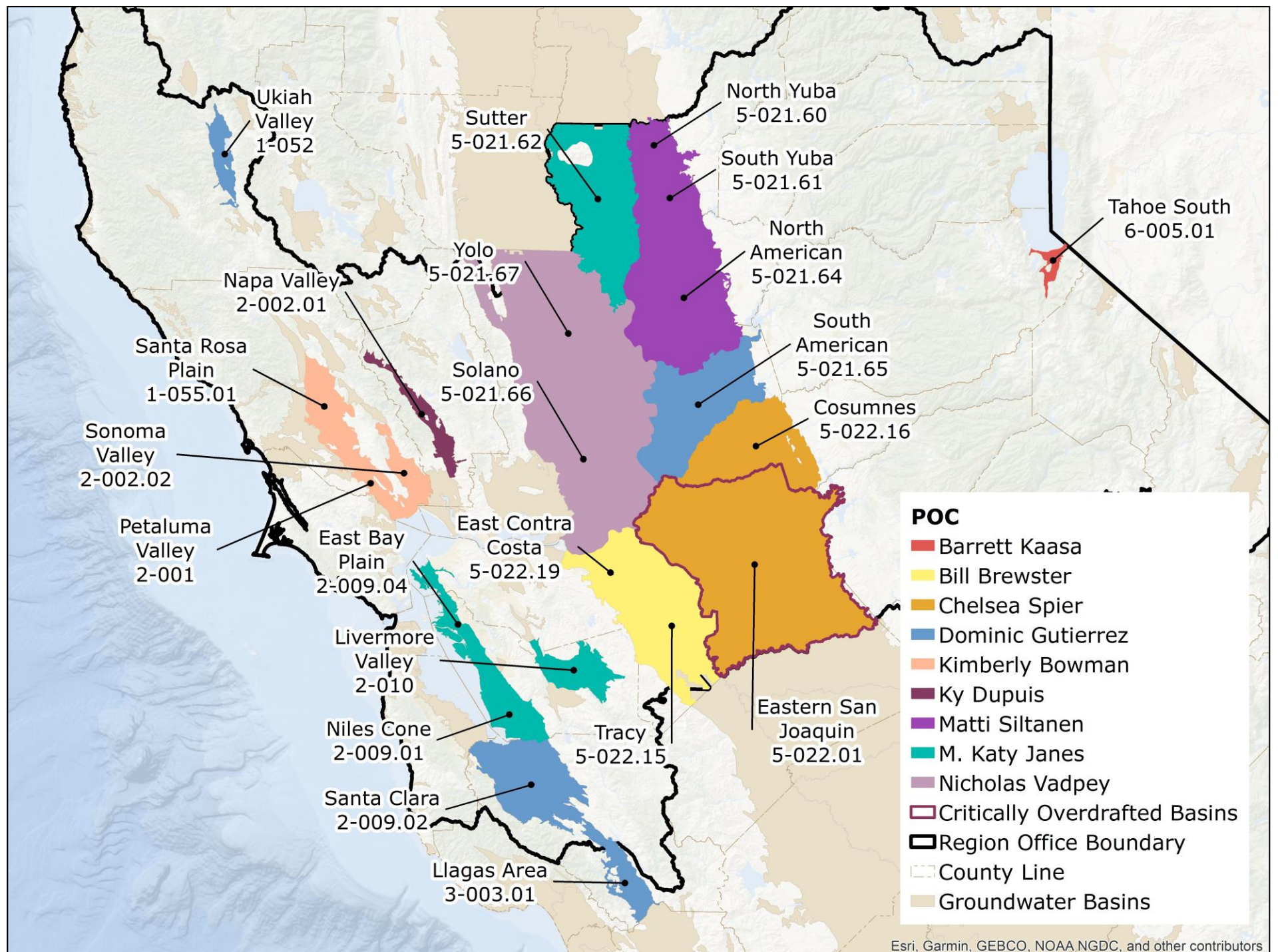


North Central Region Office

SGMA Points of Contact – Subject to Change



This map illustrates the Point of Contact (POC) for each listed groundwater basin. DWR has POCs for your use when contacting DWR with questions related to SGMA. If a groundwater basin of interest is not listed on the map or table below, and you have questions, please email SGMP_RC@water.ca.gov. POCs will get back to you during regular business hours as soon as possible. This map is current as of July 2023 and subject to change.



POC	Email	Phone	Basin(s)
Barrett Kaasa	Barrett.Kaasa@water.ca.gov	916-382-6839	Tahoe Valley - Tahoe South (6-005.01)
Bill Brewster	Bill.Brewster@water.ca.gov	916-820-8107	San Joaquin Valley – [Tracy (5-022.15), East Contra Costa (5-022.19)]
Chelsea Spier	Chelsea.Spier@water.ca.gov	916-820-8226	San Joaquin Valley – [Eastern San Joaquin (5-022.01), Cosumnes (5-022.16)]
Dominic Gutierrez	Dominic.Gutierrez@water.ca.gov	916-820-8103	Ukiah Valley (1-052), Santa Clara Valley - Santa Clara (2-009.02), Gilroy-Hollister Valley - Llagas Area (3-003.01), Sacramento Valley - South American (5-021.65)
Kimberly Bowman	Kimberly.Bowman@water.ca.gov	916-291-5123	Petaluma Valley (2-001), Napa-Sonoma Valley - Sonoma Valley (2-002.02), Santa Rosa Valley - Santa Rosa Plain (1-055.01)
Ky Dupuis	Kylie.Dupuis@water.ca.gov	916-820-7857	Napa-Sonoma Valley - Napa Valley (2-002.01)
Matti Siltanen	Mattipohto.Siltanen@water.ca.gov	916-296-7779	Sacramento Valley - [North Yuba (5-021.60), South Yuba (5-021.61), North American (5-021.64)]
M. Katy Janes	Margaret.Janes@water.ca.gov	916-281-5723	Livermore Valley (2-010), Santa Clara Valley – [East Bay Plain (2-009.04), Niles Cone (2-009.01)], Sacramento Valley - Sutter (5-021.62)
Nicholas Vadpey	Nicholas.Vadpey@water.ca.gov	916-291-7217	Sacramento Valley – [Solano (5-021.66), Yolo (5-021.67)]

